



# MODBURY MESSENGER



illustration - Kate West

For the People of Modbury & Brownston

Volume 25, Issue 313 - April 2025

## Celebrating the Opening of *The David Scott & Sylvia's Field Church Trust*



Hip Hip Hoorah. Modbury residents gathered on the field along Church Lane in March with David & Bridget Scott and family to celebrate the official opening of the community allotment garden and the establishment of "The David Scott & Sylvia's Field Church Trust".

Thank you to everyone who came along to share the occasion and the delicious home-made cakes. A copy of the Town Crier's call for the opening is available in the online MM.

**Jane Bullen,**  
*Modbury Allotment Association, Church Lane*



**Fitness studio & 24/7 Gym**

**BOMBERS**  
PHYSICAL TRAINING

Unit A  
Pearse Gardens  
Modbury  
PL21 0FX

★★★★★  
Over 100 5 star reviews

Contact us to book  
your 'No Sweat Intro'

[www.bomberspt.co.uk](http://www.bomberspt.co.uk)

[gym@bomberspt.co.uk](mailto:gym@bomberspt.co.uk)

## MODBURY MAY FAIR 2025

Your Modbury May Fair  
Programme is included in the  
centre of this  
Modbury Messenger.  
Pull it out to keep for the Fair.

You can also find this programme  
online at:

[www.modburymessengercic.co.uk](http://www.modburymessengercic.co.uk)







GEORGE H.W. ROSEVEAR  
& COMPANY

A DIVISION OF HOLBROOK ASSOCIATES

ACCOUNTANCY, TAXATION AND  
COMPANY SECRETARIAL SERVICES

01548 831427

3 MODBURY COURT, 32 CHURCH ST.,  
MODBURY, DEVON, PL21 0QR  
george@holbrookass.com

## Tall Orders Landscaping

All aspects of gardening

- \*Hedge trimming / Tree work
- \*Grass cutting - Lawns to Paddocks
- \*Fencing / Turfing / Stump grinding
- \*Weed control / Lawn Scarifying

## Logs Supplied

- \*Locally sourced hardwood
  - \*Delivered in dumpy bags / nets
- Tel . 01548 831139 / 07967258318



Modbury taxi



Contact  
Tel : 07455393693

## Modbury Private Hire Taxi

Pre booking is required for all local and longer distance journeys. This includes daytime, evening and airport transfers. Prices are agreed on booking.

Please don't hesitate to contact us if you have any questions.

07455393693

## MICHAEL R HAGGER

### Professional Painter & Decorator

City & Guilds Advanced Craft trained

Over 40 years decorating  
experience, with the last 26 years  
in the wonderful South Hams.

Fully Insured



For a friendly,  
no obligation  
estimate or  
reference

Tel: 07977445521



South Hams  
Wills & Probate

## Your local cost-effective alternative to solicitors

- Wills -
- Probate -
- Lasting Powers of Attorney -
- Inheritance Tax Planning -
- Trusts -

Call Vanessa (Chartered Accountant)  
on 01548 858806  
mail@southhamswills.co.uk  
www.southhamswills.co.uk



Designed Space  
Ltd

## Architectural Drawings and Planning Applications

Contact Alayne Harris B.I.D.  
0755 191 0874  
info@designedspace.co.uk

Based in Modbury



## MARTIN LEY PLUMBING & HEATING

- Oil Installations,  
Servicing & Repairs
- Unvented Cylinders
- Bathrooms & Showers
- General Plumbing

Tel: Modbury 01548 830609  
Mobile: 07811 934551

## FIONA'S FANCY FEET DANCE SCHOOL

### CLASSES IN MODBURY AND KINGSBRIDGE

Scan the QR code



CONTACT FIONA ON  
07800883367  
FIONASFANCYFEET@GMAIL.COM  
WWW.FIONASFANCYFEET.ORG.UK



ARE YOU PAYING TOO MUCH TAX ?  
ARE YOUR ACCOUNTS AND TAX AFFAIRS UP TO DATE ?  
ARE YOUR ACCOUNTING SERVICES COMPETITIVE ?

FOR A SERVICE SECOND TO NONE CONTACT

MARTIN E RANWELL, FCA  
**ELLIOTT & PARTNERS**  
ACCOUNTANTS AND TAX CONSULTANTS

KINGSWAY, 10 THE PRIORY,  
MODBURY PL21 0TL  
AND AT 6 MODBURY COURT, 32 CHURCH STREET  
T. 01548 830432 M. 07763 526814

martinranwell@googlemail.com

EXTENSIVE EXPERIENCE IN BOTH COMMERCE  
AND THE PROFESSION  
ALSO PROPERTY MANAGEMENT SERVICES





*Tailor-made* **travel  
arrangements to  
Africa and Latin  
America.**

35 Church Street, Modbury • 01548 858 272  
sales@distinctiveamericas.com  
www.distinctiveamericas.com

**DISTINCTIVE  
AFRICA**



**DISTINCTIVE  
AMERICAS**



## Modbury Therapy Centre *Health and Wellbeing Centre*

### Offering Complementary Therapies

Acupuncture, Reflexology, Massage Therapy, Homeopathy, Counselling,  
Psychotherapy, Nutritional Therapy, Yoga, Pilates, Meditation,  
Cognitive Behavioural Therapy, EFT, Life Coaching, Sound Healing

[www.modburytherapycentre.co.uk](http://www.modburytherapycentre.co.uk)  
[enquiries@modburytherapycentre.co.uk](mailto:enquiries@modburytherapycentre.co.uk)

07973 367517



To advertise your business in the Modbury Messenger, please contact us at  
[modburymessengercic@gmail.com](mailto:modburymessengercic@gmail.com)

[www.modburymessengercic.co.uk](http://www.modburymessengercic.co.uk)



# Erme River Clean Volunteer Appeal

**Saturday 12<sup>th</sup> April**

As a tidal estuary, all kinds of detritus are washed up on the Erme's river banks; they are brought in on the incoming tide and often stranded there as it ebbs.

The reed beds around Efford provide a particular 'catch point' for a wide range of debris from discarded cans and plastic bottles to remnants of abandoned or lost fishing gear.



**Wild About The Erme River**  
Restoring water quality and habitat from source to sea



When I joined the last river clean, back in November, I noticed an area where some tree limbs appeared to be acting as a trap, creating an accumulation of debris. While the larger items were easy to spot, the reed beds, at first glance, seemed to comprise mainly organic matter from decaying reed stems. But they concealed an insight into just what happens to waterborne plastics once they enter the environment.

Scratching only just below the surface, it was revealed how plastics break down. The combination of salt water and sunlight (UV) make the plastic brittle, a process known as photo-degradation. Tidal agitation then breaks the plastics into smaller and smaller pieces. This breakdown can result in the leaching of harmful chemicals such as

phthalates, often called 'everywhere chemicals', found in plastic food containers and packaging. Bisphenol A (BPA) is another leached chemical used in polycarbonate plastics like water bottles and for epoxy resins used in food cans and bottle tops. Salt water accelerates the breakdown and the released chemicals can have a toxic effect on marine life and ecosystems.

There are methods of collecting microplastics such as Nurdle Trommels and Micro-Vacs, but these are designed primarily to separate plastics from compacted sand on beaches. To collect microplastics in a reed bed would require an army of volunteers undertaking a fingertip search. It's not a practical proposition for our volunteer teams but we can make a positive and valuable start by removing the visible plastics and other debris before it starts to breakdown. It's a very positive first step and really makes a difference, as the full bags of collected material show.

**Join our volunteer river clean on Saturday 12<sup>th</sup> April at Holbeton at 10:00am. Volunteers meet at 10:00am at Brownsell Farm Yard, Holbeton PL8 1JP W3W slippery.weeps.stewing. and walk to the riverbank location.**



[www.let-it-out.co.uk](http://www.let-it-out.co.uk)

*The flexible approach  
to letting your holiday home*

Gail Critchlow  
07889 628514

Liz Baker-James  
07388 673228







While our river cleans have a serious objective, they are designed to be enjoyable and inclusive. Families with older children are welcome, but children must be supervised at all times. Access to the river is not necessary. The date has been chosen so that the tide will be well on its way out when we arrive, exposing the clean-up area. Please bring wellies, protective gloves and appropriate clothing. Rubbish bags and pickers are provided. There are a few fairly shallow muddy channels in the area, so some caution is necessary if you don't want to contribute to the pollution by leaving a wellie in the mud.

You will be rewarded with huge thanks, satisfaction at seeing bags full of collected debris, great camaraderie . . . and cake. Please bring your own drinks.



Beneath the surface, plastics and microplastics are everywhere

**Colin Whybrow**

## **MODBURY MAY FAIR ROAD CLOSURES 2025**

### **ROAD TRAFFIC REGULATION ACT 1984,**

### **SECTION 16A THE COUNTY OF DEVON TEMPORARY PROHIBITION OF THROUGH TRAFFIC**

No person shall cause or permit any vehicle to proceed on the sections of Affected Roads except for access to land or premises on or adjacent to those length of roads.

NOTICE is hereby given that Devon County Council has been approached to make the above titled order live as per the dates below. It is planned that this will be invoked as follows:

#### **Saturday 3rd May 07:00h - 14:30h**

Poundwell Street Closed 07:00h – 14:30h From Post Office – Bottom of Short stay car park.  
Access to Poundwell from 07:00h on Saturday via Church Lane & Bunker Hill only

#### **Saturday 3rd May 15:00h – 17:00h Carnival Parade**

A379 Town Centre (Palm Cross Green - Galpin St) 16:00h -16:30h Brownston Street, 16:00h – 17:00h,  
Dark Lane, 16:00h – 17:00h, Barracks Road 15:00h – 16:30h

#### **Monday 5th May 14:00h - 15:00h**

Town Centre (Palm Cross Green - Galpin St), Brownston Street, Dark Lane, Barracks Road closed to all traffic -  
Modbury Mile Fun Run Road Races 14:00h -15:00h

### **CAR PARK CLOSURES**

APPLICATION HAS BEEN MADE TO SOUTH HAMS DISTRICT COUNCIL TO CLOSE THE CAR PARKS AS FOLLOWS:

#### **Friday 2nd May - Saturday 3rd May 2025**

Poundwell Short Stay Car Park closed for May Fair Market from 18:00h on 2nd May until 15:00h on 3rd May

#### **Monday 5th May 2025**

Poundwell Lower Long Stay Car Park closed for May Fair Opening Ceremony  
closed from 06:00h on 5th May until 1400h on 5th May



## The Great Tommy Sleepout

One cold Friday evening in March, a group of Scouts, plus some senior Cubs, abandoned their cosy beds in return for a night under canvas. What was their motivation? It was to take part in the Great Tommy Sleepout event and raise funds to help provide accommodation for homeless veterans. It was part of what has become a National annual challenge every March, and which seems to gain more support each year.

We met at 7:30pm and took the 21 Scouts and Cubs on a night hike first to warm them up and wear them out (the latter is a challenge!). Some of you may have heard us making our way back through Modbury around 9:30pm.

Then it was time to get the bedding sorted (double sleeping bags, blankets and thick roll mats), have some hot chocolate for inner warmth, and toast giant marshmallows on the fire. All were in their tents by 11 pm though not necessarily asleep, and I think most of us had a few hours' kip, but our noses were cold! It is worth noting that we had a number of new tents which we were able to purchase as a result of grant money provided last year by the May Fair Fund. Thank you.

At 7 am, they were packing up and striking the tents, then moving them back to the Scout Hut to dry out fully, before returning home, tired and hungry, for a good breakfast. Apologies to parents if any of them had a grumpy day!

The event was masterminded by Dave West, MBE, former Royal Marine, chair of local RBL and Scout Leader. He reminded the youngsters that, although we were all proud of them for taking part, they should imagine what it would be like to sleep out for not one, but 365 days a year, without a tent, with far less comfortable bedding, and to be hungry a lot of the time.

Well done Scouts and Cubs. It was a fun, but also meaningful experience for us all.

**Mowgli**



## Experience Premium Quality At Home Care with Visiting Angels

Visiting Angels provide exceptional assistance and personalised care for your loved ones to foster independence and enhance quality of life.

### KEY SERVICES :

- Companionship
- Meal preparation and planning
- Light housekeeping
- Medication reminders
- Assistance with mobility
- End of life care
- Post hospital stay care
- Personal care



**Visiting Angels South Devon**  
**Call 01752 422105**  
**[southdevon@visiting-angels.co.uk](mailto:southdevon@visiting-angels.co.uk)**

**Visiting Angels®**  
QUALITY AT HOME CARE

# Modbury Parish Council Meeting

Tuesday 4th March 2025, 7pm

**Present:** Six councillors, SHDC Cllr Bernard Taylor, and three members of the public. Apologies were received from DCC Cllr Rufus Gilbert.



## Devon County Council Report

No report received due to absence of Cllr Gilbert.

## South Hams District Council Report by Cllr Bernard Taylor

- Local government reorganisation: it seems likely that a mayor will be appointed in 2026, and formation of a unitary authority is likely to happen in 2027/28. Details are still unclear.
- Community Awards: 70 plus nominations were received. Awards will be presented at full council on May 20<sup>th</sup>.
- A fly tipper has been successfully prosecuted and fined £5000.
- Cost of living grants totalling £80,400 have been made to households in need.

## Highways and Maintenance

- Cllr Bill Cole has been appointed as the new Road and Snow Warden.
- The post of P3 Footpath Coordinator is still vacant. This means that work on the footpath network is affected. Anyone interested in volunteering, please contact the Parish Clerk.
- New equipment has been installed in the Memorial Hall Play Park, funded by the Community Engagement Fund.
- Concerns have been raised about confusing speed limit signage on New Road. This and other matters to be discussed at Parish Council/ Highways meeting.

## Community engagement

- The date for this year's town make over will be the weekend of April 26<sup>th</sup>, 27<sup>th</sup>. Further details below.
- The work of the Litter Picking volunteers was noted and commended.

## South West Water

A meeting was held with the SWW team, representatives of the Parish Council and local businesses, to discuss plans for the proposed drainage work. A public meeting will be arranged later this year.

**Date of next meeting: Tuesday 1<sup>st</sup> April 2025**

**Ann Turner**

It's that time of year when we spruce up our town to get ready for the spring and summer seasons.



Join us for

# Modbury's Marvellous Makeover 2025

Saturday and Sunday 26<sup>th</sup> and 27<sup>th</sup> April,

10am until 4pm

We're going to be cleaning, planting, weeding, window cleaning, sign cleaning, painting and flag flying. Come for some or both of the days, we will have gloves, Hi Vis vests, rubbish bags and tools but please bring your own if you have them.

Safety is our number one priority. Meet us outside the Parish Office, Modbury Court for briefing throughout the weekend. From 10am onwards.



Keep an eye on social media



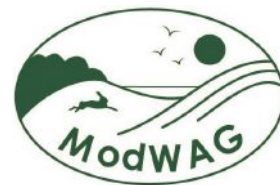
**Facebook:** Modbury Parish Council, Modbury Community page, Love Modbury and Nextdoor Modbury, posters and notice boards or pop into a Parish Council Saturday Surgery.

See the Messenger p10 for contact details.



## Modbury Birds

Down in darkest Africa, preparations for the spring migration are underway. There's excitement with the Martins, "Dad, can you teach me to barrel roll and loop", says the son, whilst daughter asks "Is it the jam or the cream first, Mum?"



However, across the valley all is not well with the Swallows "*Can you pop over to Modbury, and check the nest is OK?*" asks Mrs. "*OK, I'll do it tomorrow*" is the reply. "*Now while the wind is in the right direction*", "*You'll be back in 10 days, I'm just watching the lions stalking the wildebeest*". "*You watched that last week*". "*No that was the lions stalking the zebra*". "*When we get there, you can watch it on catch-up with that nice Mr Attenborough*" "*It's not the same, I'll go tomorrow*". "*Go now, PLEASE*". "*Yes, dear. Now where's the keys? I'm sure I put them here somewhere...*"

Meanwhile, here in Modbury we had a further 12 additions to take the total up to 51:

Wren, Firecrest, Redwing, Skylark, Chiff Chaff, Yellowhammer, Tawny Owl, Green Woodpecker, Nuthatch, Heron, Sandpiper, Black-Headed Gull.

I'm heading the table with 37, Boony has 34, Kath 29, Martin 26, Pete 19 and Jennie 16.

I thought we had a pair of cranes in the fields by the narrows heading to Ermington, but they were herons, however, there were a pair of Egyptian geese with the Canada Geese, probably discussing what the Trumpeter swans were up to.

Any new additions or personal lists, please forward to [Modburybirds@btinternet.com](mailto:Modburybirds@btinternet.com). I would love to know if anyone hears or sees the visiting onomatopoeic bird, they used to be common, but I haven't heard one for a few years.

**Roger Price**



### MODBURY TENNIS CLUB

**April 2025/March 2026 Season**

New Memberships and Renewals are invited for the season commencing 1<sup>st</sup> April.

Join your local tennis club and have access to the all-weather courts 52 weeks a year right on your doorstep.

Family Membership	£55.00 pa
Single Membership	£35.00 pa
Junior & student Membership	£22.00 pa
Child (11 yrs & under)	£ 6.00 pa
<ul style="list-style-type: none"><li>• Coaching available for all age groups;</li><li>• Friendly Club Sessions Thursday afternoons &amp; Sunday mornings (free to members);</li><li>• or just play whenever you wish to.</li></ul>	

Full details & Application Form available at [www.clubspark.lta.org.uk/ModburyTennisClub](http://www.clubspark.lta.org.uk/ModburyTennisClub)



**NOAH'S ARK**  
For 0-4 year olds

**Wednesday Mornings**  
**Term Time 9.30-11.00 am**

The QE11 Recreation Ground  
Chatwell Lane, PL21 0FS

Hot drinks • Home baked cakes • Baby weighing scales  
Songs • Musical instruments • Bible story • Craft  
Baking activity • Parachute games

## Holbeton Film Club



April's film is **Radical** (certificate 12A). This brilliant film, in Spanish with subtitles, is our first foreign language one. It is based on a true story. Children at Jose Urbina Lopez Elementary are among the worst performing students in Mexico, with their world one of violence and hardship, not possibility. It might seem like a dead end, but it's the perfect place for new teacher Sergio Juarez to try something different.



This is showing on **Friday the 11<sup>th</sup> April 2025** in Holbeton Village Hall. Doors open 7pm. The programme starts at 7:30pm. Tickets on the door still only £4, £2 for accompanied under 12s (cash only). Ice creams will be on sale for £1.

Do visit our new website with this QR code:

Our forward programme for 2025 continues with:

And Then Come The Nightjars, 15  
Thelma, 12A

Saturday 10<sup>th</sup> May  
Friday 13<sup>th</sup> June

Tel: 01752 830274 email [harryluson@gmail.com](mailto:harryluson@gmail.com)



**Harry Baumer**





# Modbury Mission Community

To know Jesus and make him known



**St George's Church, Modbury**

**www.modburyteam.org**



pray

Rev. Matt Rowland

01548 830260

matt.rowland@modburyteam.org

	Service	Service Leader
April 6th	Holy Communion 9.30 am	Rev. Matt Rowland
April 13th Palm Sunday	Holy Communion BCP 8.00 am All-Age Service 9.30 am	Rev. Matt Rowland Rev. Matt Rowland and Helen Pickard
April 17th Maundy Thursday	Holy Communion 7.00 pm	Rev. Matt Rowland
April 18th Good Friday	Walk with activities for families 10.00 am Reflections around the Cross 2.00 pm	Gil Snook Joyce Howitt
April 20th Easter Sunday	Holy Communion 9.30 am	Rev. Matt Rowland
April 27th	Sunday Worship 9.30 am	Joyce Howitt

## Christian Comment: All Change

To come out of winter into spring feels like one of the biggest transitions of the year. Flowers bloom, trees bud, mornings grow lighter, and, hopefully, days become warmer. Lambs appear in the fields, and we begin to wake to the sound of birdsong. It is truly a season of change.

This season of change is especially significant for me and my family. This will be the last magazine article I write as your vicar, as after Easter, I will be moving to take up a new role as the rector of St Leonard's Church in Exeter. The family will remain in the vicarage in Modbury until the end of the school summer term, and then we will move into a new home in Exeter.

It is all change for us: new job, new church, new home, and new schools. In one of the letters in the New Testament, the writer encourages the people to respect their church leaders, but also to be cautious of those who might lead them astray. Between that encouragement and warning, we find these words: 'Jesus Christ is the same yesterday and today and forever.'

Here is hope in a world that can often feel uncertain and unpredictable. Here is hope as leaders from all walks of life come and go. Here is hope when our own personal circumstances shift, leaving us feeling unmoored. There is one who can always be relied upon, one who never changes, whose promises are steadfast—an anchor in the storms of life.

In my own personal season of change, he will be the one I look to. As I have sought to do over the past seven years, I encourage and invite you to look to him as well.

Thank you for the way you have welcomed me into this community. We will deeply miss living in this beautiful part of the South Hams, but we are incredibly grateful for our time here. We will leave with many fond memories—perhaps we will see you on the beach in the future!

With every blessing,

**Matt Rowland**

### **St Monica's Roman Catholic Church, Modbury**

No weekly mass at present

### **St Austin's Priory Roman Catholic Church, Cadleigh**

Mass weekly at 11.30 am  
on Sunday

**Phone:** 01752 895888  
**E-mail:** ivybridge@prcdtr.org.uk  
**Web:** staustinsivybridge.co.uk



## **St George's Church Charity Soup Lunches**



Come and join us for a choice of soups,  
coffee, tea and tray bakes.  
For 5 weeks during Lent, St George's is  
holding lunches in the church  
from 1230 - 1330  
in aid of chosen charities and St George's

The last 2 lunches are on:

**1 April - Himalayan School**  
**8 April - Children's Hospice South West**



## THE STANBOROUGH CHORUS

are performing:

**BACH – CANTATA No 147** featuring **Jesu, Joy of Man's Desiring**, **BACH – MOTET No 6**

**MENDELSSOHN – HEAR MY PRAYER** featuring **O for the Wings of a Dove**

**CHILCOTT – REQUIEM**

**CONDUCTOR: TREFOR FARROW**

**On SATURDAY 12<sup>TH</sup> APRIL AT 7:00pm at ST GEORGE'S CHURCH, MODBURY**

**With Nick Danks on Organ and Instrumental Ensemble**

**Tickets: adults £18/15 (pay as you wish) Under-18s free**

Available from Modbury Post Office, Kingsbridge Information Centre, all choir members and online at [stanboroughchorus.com](http://stanboroughchorus.com)

Refreshments and a raffle will be available

## AUNE VALLEY IN MODBURY

6 Church Street, Modbury



**Free Local Delivery\***

\*Terms & conditions apply.

**10% Off**  
with this advert

Bring this with you to receive 10% off in the shop or cafe. Terms & Conditions Apply

[www.aunevalleymeat.co.uk](http://www.aunevalleymeat.co.uk)

**imakewebsites.**



**NEED A NEW  
WEBSITE?  
I CAN MAKE IT!**

**Contact Vicky  
01548 831910  
[www.imakewebsites.co.uk](http://www.imakewebsites.co.uk)**

## MODBURY PARISH COUNCIL

Modbury Parish Council Office, 1 Modbury Court, PL21 0QR

Tel: 07467134225

email [parishclerk@modburyparishcouncil.gov.uk](mailto:parishclerk@modburyparishcouncil.gov.uk)

### Your Councillors are:

Bill Cole	01548 830913
Chris Field	07836 592854
Richard Foss	01548 721420
Barbara Price (Chair)	07739752095
Tony Price	07801837129
Phil Smith (Vice Chair)	07759282404
Dave Trigger	07808742372
Ann Turner	01548830606
Sarah Wyatt	07794 662903

[richardfoss@modburyparishcouncil.gov.uk](mailto:richardfoss@modburyparishcouncil.gov.uk)  
[barbaraprice@modburyparishcouncil.gov.uk](mailto:barbaraprice@modburyparishcouncil.gov.uk)  
[tonyprice@modburyparishcouncil.gov.uk](mailto:tonyprice@modburyparishcouncil.gov.uk)  
[philsmith@modburyparishcouncil.gov.uk](mailto:philsmith@modburyparishcouncil.gov.uk)  
[davetrigger@modburyparishcouncil.gov.uk](mailto:davetrigger@modburyparishcouncil.gov.uk)  
[annturner@modburyparishcouncil.gov.uk](mailto:annturner@modburyparishcouncil.gov.uk)  
[sarahwyatt@modburyparishcouncil.gov.uk](mailto:sarahwyatt@modburyparishcouncil.gov.uk)

**How can we help you?** Councillors run drop-in surgeries on Sat. 10:00 - 11:00 am in the Parish Office at 1 Modbury Court. The Parish Clerk is in the Parish Council office on Tues & Thurs, 10am – 5:30pm. Call into the office, phone, email or come along to our meetings at 7pm in the Pavilion, QEII Recreation Ground on the first Tuesday of every month and speak in the public forum.

### Devon County Councillor (Salcombe Division):

Rufus Gilbert Tel: 01548 856659  
[rufus.gilbert@devon.gov.uk](mailto:rufus.gilbert@devon.gov.uk)

### South Hams District Councillor Charterlands Ward:

Bernard Taylor Tel: 01548 830844  
[Cllr.Bernard.Taylor@southhams.gov.uk](mailto:Cllr.Bernard.Taylor@southhams.gov.uk)





# MODBURY MAY FAIR 2025

## 2nd - 10th May



### MODBURY BLASTS INTO SPACE!

A Royal Charter to hold an annual nine-day Fair was granted to Modbury in 1329 by King Edward III. The Charter was read by the Portreeve on May 3rd, eve of the old St. George's Day, to announce the start of the Fair and allowed that the people had the right to free trade and to sell liquor without a licence. This freedom was symbolized by the Glove, which, on a pole with flowers, was first hung on the Market Hall, then the Bell Inn on Broad Street. The Town Crier reads the Charter and the Glove is hung there on the same building every year.

Modbury's own Town Crier, David Scott, will officiate and herald events throughout the Fair.

### Friday 2nd May

#### **CEILIDH - 7.00pm - 10.00pm at the Memorial Hall**

Do come and enjoy our fabulous opening event to the May Fair.  
An evening of fun and dancing with instructions by our wonderful callers  
Rod and Jac Denley-Jones. £12 to include food; licensed bar (not BYO)

**Tickets available from Ringrose in Broad Street**

### Saturday 3rd May

#### **May Fair Market in Upper Poundwell Car Park 9.00am – 1.00pm**

Opened by the Royalty, Modbury's annual street market with a superb array of crafts, goods, produce, games, and ever-popular plant stall. 1st Modbury Scouts will be serving bacon rolls!

*To book a stall email [ira.young@btinternet.com](mailto:ira.young@btinternet.com)*

#### **Modbury Mile Fun Run registration – 10.45am – 12.00pm**

Secure your place and collect your number at the May Fair Market.  
The run is on Monday at 2.15pm - see there for details. Entry fee £2 pp for all.

#### **Art @ The Hart 9.00am – 1.00pm**

Beautiful artwork on display and for sale upstairs at the White Hart. Watercolours, oil paintings, paper art, prints, photography, gifts and much more. All created by local artists.

#### **Shop Window Competition Judging – 10.00am**

#### **Carnival Procession - 4.00pm - 5.00pm**

Judging from 3.15pm, this will start from the Memorial Hall and will proceed down Church Street, with the wonderful Samba Band, and return via Brownston Street and Dark Lane. Entry forms from Marchand Petit to be returned, to them, no later than the 30th April.  
**Display of Vintage cars from the Devon Vintage Car Club 2.00pm to 3.30pm by Long Park.**

**The cars will then join the parade at 4pm.**

*If you are not a member, but wish to include your car, please email [mike.oakins@gmail.com](mailto:mike.oakins@gmail.com)*

**The Carnival is sponsored by Marchand Petit Estate Agents**





## Sunday 4th May

### **May Fair Treasure Hunt – from 1.30pm**

A treasure hunt for adults and another for children in a gentle, enjoyable stroll around town.

Collect your forms from 1.30pm in the Upper Poundwell courtyard.

Fee £1 for adults and 50p for children. Return forms by 4.00pm to the Church.

### **Afternoon Teas by St George's - from 3.00pm in St George's Church**

Indulge with a traditional Devon tea - squash and gluten-free cake available.

## Monday 5th May

### **Crowning Ceremony with entertainment for all**

#### **Lower Poundwell Car Park**

**10.00am-12.00pm** Try your hand at old-fashioned *fairground games* through the morning

**10.00am-12.00pm** *buy your ducks* for the duck race

**10.30am** *Crowning of the May Fair Royalty*, Reading of the Charter by the Town Crier and Hanging of the May Fair Glove. Presentation of May Fair Community Grants. Entertainment for the royalty to include live music, and Circle dancing demonstration (please join in!)

**10.45am-12.00pm** *Mile Fun Run registration* – Book and collect your number, entry fee £2

**10.45am** The Modbury Twinning Association will run a *creperie*

### **Duck Race - 12.30pm**

Prizes for 1st, 2nd and 3rd places

Buy your duck for £1 from local shops or on the day in the Lower Poundwell Car Park

Be aware that access to the stream and duck race, which is in the Meadow, is via a stone stile, and is unsuitable for wheelchairs and pushchairs

### **The Modbury Mile Fun Run - 2.15pm**

A fun event for all the community starting and finishing at the bottom of Galpin Street.

Adults and teenagers compete in the first race, children in the second (minimum age 5y, children under 8y accompanied by an adult).

With 12 categories from age 5-8y to over 50y,

***there is something for everyone.***

Trophies for the winning runners in each age/gender category

**PLUS medals** for all runners and gold/silver/bronze for the top 3 in each category

**PLUS prizes** for the best-dressed adult and junior runner in line with this year's theme (space).

There will be no official timing ... ***because it's fun!***

**The Modbury Mile is sponsored by Luscombe Maye Estate Agents**



### **Quiz at the Exeter Inn – 8.00pm**

£1pp entry, or as part of the £10 meal deal (food served beforehand from 7.00pm).

Maximum team size is 6, no minimum.

Contact the Exeter Inn on 01548 831225 to book a table in advance.

Cash prize for the winner and the usual superb raffle prizes.



## Tuesday 6th May

### **Cub Scout Beetle Drive – Memorial Hall – 5.45pm-7.45pm**

1st Modbury Cub Scouts invite you to join in a fun-filled evening.

Prompt start at 6.00pm. £2 entry fee.

KS1 children should be accompanied.

## Wednesday 7th May

### **Dog Show – 6.30pm – Memorial Hall    Courtesy of South Moor Vets**

**Categories:** Best Puppy (under 18 months); Golden Oldie (over 7 years); Best Rescue; Best Crossbreed; Best Pedigree; Best Fancy Dress; Waggiest Tail; Child's Best Friend.

Best In Show: all class winners will automatically be entered.

**Entry is £1 per Dog per class**

**NEW** Best Pet Portrait Art Competition - entries are FREE and winners will be displayed at South Moor Vets after the show

Contact South Moor Vets for more info and to register your Dog for this year's show.

***You must pre-register, otherwise you may not be able to enter on the day!***

South Moor Vets 01548 830210 ; [modbury@southmoorvets.co.uk](mailto:modbury@southmoorvets.co.uk)

### **Acoustic Night of Music at the White Hart – 8.30pm**

Bring along your guitar or other acoustic instrument or just your voice and join in with the tunes and singing. Or come along to listen.

## Thursday 8th May

### **Victory in Europe Day - 80th Anniversary**

**09.30am - Special flag hoist at Palm Cross Green**

**10.00am - Service at the War Memorial**

### **Modbury Gospel Singers – Memorial Hall - 7.30pm start**

Modbury Gospel Singers will be entertaining you with their Sound of Gospel Music

***Free entry.*** Doors open at 7pm.

Bring your wallets for the cash bar and donations to Modbury May Fair, and your hearts for a fun night of music for all ages.





## Friday 9th May

### **The Exeter Inn invites Senior Residents to Lunch at 12 noon**

£9.95 for two courses - please book your place by calling 01548 831225

Donations to Modbury May Fair appreciated.

### **Bingo at the Memorial Hall - 7.15pm**

Organised by Modbury Brownies. Doors open 6.45pm. A simple, fun game of chance for all the family. Bring your own bingo dabbers and buy your games at the door.

Prizes to be won. Refreshments available.

## Saturday 10th May

### **Dinner in Cleo's Bistro at the Modbury Inn - 6.30pm**

You are invited to dinner, with 2 courses for £25

Phone Craig or Leah to book on 01548 831230

Donations to the May Fair

## Sunday 11th May

### **May Fair Service at St George's - 9.30am**

The May Fair King and Queen will be joining us and we invite everyone in the community to come along and give thanks for the Modbury Fair, and the week of fun we will all have had.

Everyone is welcome at this all-age service; please stay to enjoy refreshments afterwards.

### **Modbury History Walk – 1.30pm**

Join Tony Price (and Alfie) for a one-hour (or so) stroll around the centre of town with an insight into its long and fascinating 1,000 year (and more!) history.

Numbers have to be limited, so please email [tp@lordpricexp.uk](mailto:tp@lordpricexp.uk) to book a slot.

## May Fair Writing Competition

Organised by the *Modbury and South Hams Creative Writing Group*.

Write a short story or poem on the May Fair theme of Space (however you define it!)

The short story should be a maximum of 2,000 words (fewer is fine!), and the poem should be at most 30 lines. There is no minimum (in case we run out of space!).

There are two categories: adults 17yr and over; children 16yr and under

Email entries to [ajfield@btconnect.com](mailto:ajfield@btconnect.com) by Friday 2nd May

Please state name, contact number, category and age (if 16yr and under) at top of piece.

And don't forget to give your piece a title.

The winning entries will be announced in the Messenger and may be published.

### **The Modbury May Fair has its own**

**Facebook page: search on FB for**

**Modbury May Fair**

**and join the group for details and**

**updates of the week's events.**

**We will also be posting regularly on Nextdoor**

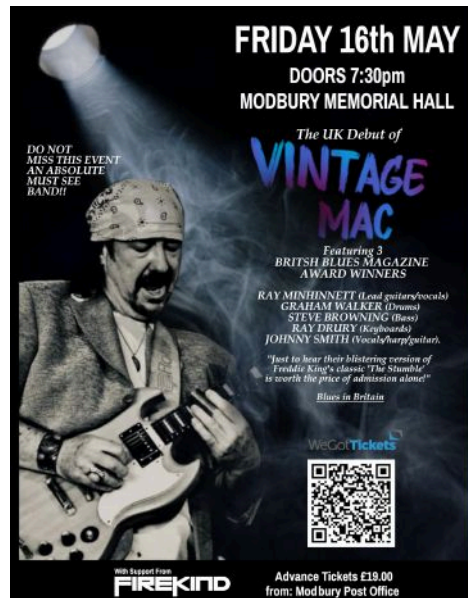


## More Exciting Live Shows for Modbury

After the tremendous reaction to the previous live shows held at Modbury Memorial Hall, a full schedule of upcoming events for 2025 will be announced soon. Various big name artists have been mooted and the team behind these events are working very hard to bring more of the best touring acts to the town, including a mouthwatering official tour appearance from **Martin Turner's Wishbone Ash** in Sept, tickets which has recently gone on sale online through their website (see lineup poster for purchase link).

**The Unravelling Wilbury's** enjoyed their visit to Modbury so much (thank you to the White Hart for their exceptional hospitality), two of the members are planning to holiday here during the summer and the band have confirmed that they will return to deliver a special Xmas Show on Saturday 20<sup>th</sup> December in what will be their final show of 2025.

**Don't Miss:** Finally, it's an incredible coup for the town to be hosting a show that has caught UK attention on the blues circuit. It's an honour to present one of the UK's top Blues Guitarists from the past four decades for a special album launching appearance on Friday 16<sup>th</sup> May. **Vintage Mac** is the latest combo assembled by Frankie Miller's Full House founder, Ray Minhinnett, and features three British Blues Award Winning Musicians. The band will be performing tracks from their highly anticipated debut album, along with familiar songs from Peter Green era Fleetwood Mac.



Further announcements are to come, please continue to support live shows in Modbury.

**Rob Giles**

An advertisement for Helen Moore Property. The background is a coastal landscape with a beach and houses. On the right, a woman with blonde hair, wearing a grey blazer, is smiling. The text on the left reads: "HELEN MOORE PROPERTY", "POWERED BY exp UK", "Independent Estate Agents", "Over 100 years combined experience", "Local. Approachable. Honest.", and a phone number "01752 962162" with a phone icon. There is a QR code at the bottom left and a signature "Helen" at the bottom right.



## BIGBURY CAMPING BARN



Wood-fired sauna and hot-tub to soak away the winter blues, available for your sole use.

Contact Cathy 01548 810079  
info@bigburyholidays.co.uk  
www.bigburyholidays.co.uk

## K Woodward Home Improvements

- Bathrooms and Kitchens
- Extensions
- Property refurbishment
- Structural Alterations
- Tiling and Flooring

Multi Skilled Professional Approach to Improving your Home



Tel 07772 921544

keithwoodward1220@gmail.com

## MODBURY OSTEOPATHIC CLINIC

Dr. Mike Hopkins

Back, neck,  
chronic and  
complicated  
muscular pain



01548 830040/  
07775815906

(by the Palm Cross estate entrance)

## Ivybridge u3a March General Meeting Monday 14<sup>th</sup> April at the Watermark Centre, 2.00pm

Guest speaker, Mike Haywood, will talk on **"The Mirror, the invention that changed our perception of self forever"**. Mike has a growing reputation as a marine and portrait artist.

The event is open to members and to those no longer in full-time employment who wish to find out more of what u3a has to offer.

Roy Little



## Modbury Branch Royal British Legion

The next Meeting of the Modbury and District Branch of the Royal British Legion will be a Business Meeting in The Club on Wednesday 2<sup>nd</sup> April starting at 7.30pm.

New members are always most welcome.

David Scott



Visit us at our dedicated Wellness Sanctuary

**Blissful Yoga.**  
**Workshops & Events.**  
**Coffee & Shopping.**

WellnessWarriorsYogaStudio.co.uk

Modbury High Street, 2C Broad Street, Modbury PL21 0PS



**SATURDAY 3RD MAY**  
**9 - 1PM UPSTAIRS IN**  
**THE WHITE HART**  
**ASSEMBLY ROOMS**



## MODBURY ALLOTMENT ASSOCIATION (MAA): NOW THE DAVID SCOTT & SYLVIA'S FIELD CHURCH TRUST

As regular readers of the monthly publication "Modbury Messenger" may recall, in the February 2025 copy, there was an article about the new progress of the Modbury Allotment Association and how I had bought Sylvia's Field and all the Allotment holders could continue to grow produce on the Community Asset Allotments in Church Lane. In the March edition, there was an invitation to come to the formal opening of the David Scott and Sylvia's Field Church Trust which took place on Saturday 8th March at 11am. Many people came and the Modbury Allotment Association committee had organised a special sign to be put on the Allotment Gate, and planned a special commemorative tree (crab apple) for me as owner and Town Crier to plant using a special green handled spade, together with a very smart plaque. My Town Crier cry (available in the online Messenger), pointed out that the previous Vicar, Rev. Neil Barker, had called for God's blessing and it was a delight that he did so again. A second blessing was done by Rev. Matt Rowland.

After these, I explained that my future intention is to form a Trust, which will be established with all the Allotment holders paying rent and ensuring that the daily running of the site is maintained. All profits will then be paid into a restricted St George's Church Fabric Fund to assist in ensuring that Modbury Church is maintained as both Mrs Sylvia Mears and I would want. The Chairman of the Modbury Allotment Association, Brian Weeks, then spoke about the 15-year history of the allotments before I was asked to plant a new tree in Sylvia's Field and unveil a most impressive plaque. Finally there was a celebration party and a memorable day in Modbury Town's green history!

**David Scott**



## MODBURY – A MONTHLY FILM?

Holbeton has a successful Film Programme and details of the films appear in the Messenger. Now, if we could set up a monthly film evening in Modbury, the film lovers in Modbury and Holbeton would have options of two films a month! The Memorial Hall Committee have confirmed there is equipment in the Hall, but it needs a group of devotees to get together to set up an organising group.

Are you a film buff, if so, would you join a group of like-minded film buffs to set up a film night once a month in Modbury?

If you think it is, please contact me on [ira.young@btinternet.com](mailto:ira.young@btinternet.com).

**Ira Young**



## Town Crier's Cry for the David Scott & Sylvia's Field Church Trust Allotment's Dedication

OYEZ OYEZ OYEZ

Members of the Modbury Allotment Association, members from St George's Church, District and Parish Councillors, others from different allotments, people from various Modbury societies, schools, shops, businesses and from Modbury Town, my Lords, Ladies & Gentlemen. A very warm welcome to all on this special day of 8<sup>th</sup> day in the month of March in the year 2Ms, 2Xs, 1V - 2025 in the year of Our Lord to the continuing life of this Community Asset of the Church Lane allotments. It is almost 15 years to the day when I, as the Town Crier of this medieval market Town of Modbury, here in the parish of St George, the Patron Saint of All England did preside over the formal opening of Sylvia's Field to become allotments for the first time. Last year when this field was put up for sale, I decided to purchase in order that the allotment holders could continue to grow their own, just like the Goods in the Good Life. Back in 2010, Rev. Neil Barker led us all in prayer and I am grateful that he is here again today and also Rev. Matt Rowland. So past and present vicars of Modbury will lead us in prayer... Thank you to our Reverends.

OYEZ OYEZ OYEZ

What I have done is set up a Trust called "The David Scott & Sylvia's Field Church Trust" and all the allotment holders will pay rent to maintain this field and profits will then be paid into St George's Church Fabric Fund every year, as both Sylvia Mears and I would want.

Now I invite the present Chairman of the Modbury Allotment Association to say a few words – please pray silence for Mr Brian Weeks... Thank you, Brian.

OYEZ OYEZ OYEZ

I do thank the Modbury Allotment Association committee for their efforts in providing the commemorative tree planting – another green act in Modbury Town's history – and thank you, too, very much, for arranging this celebration party.

The Modbury Allotment Association now kindly invite all to join with them in a celebration party.

God save the King

OYEZ OYEZ OYEZ

**David Scott**



 **Luscombe Maye**  
Since 1873

### The Luscombe Maye Advantage

To find out how much your home is worth, please call or email Eleanor, Sara or John in the Modbury office.

For more information contact  
**modbury@luscombemaye.com** or  
call **01548 830831**

luscombemaye.com  luscombe maye  luscombe\_maye



A First for Bombers

Modbury has its very own gym, Bombers, which is known for being inclusive to all those over 16 years, and the coaches provide a great variety of options as well as classes and special programmes tailored to individuals. It sells itself as ‘the gym for people who don’t like gyms’ and owner, Tom McKenny, is always open to new ideas.

This openness was tested when I approached him with the concept of running a one-off session for our Modbury Cubs, the idea being to show them the importance of warming up before and stretching after exercise, but also having some fun on some of the equipment available. Given that the Cubs are aged 8-11 and most of them are too small to use kit designed for adults, this was an interesting challenge.

I’m pleased to say that Tom and coach, Narcisse, rose admirably to the challenge and the Cubs had a great evening. Narcisse led the warmups and explained the exercises while Tom did the demos of pull-ups, triceps dips, lunges and V-ups. Then we split them into teams for timed periods on the ski machine, followed by squat jumps, burpees, and bunny hops. The enthusiasm, flexibility and competitive spirit was tangible, not to mention the noise, as they cheered each other on, and the four Cub leaders there decided quite early on that we had no chance of keeping up! We finished up with some stretches, as promised.

We like to give the Cubs experiences they may not otherwise have the chance for, and to learn something new. I think this session ticked the box on both fronts very nicely. Thanks to Tom and Narcisse; this was a first for the cubs and for Bombers gym, and I hope it won’t be the last.

Mowgli



Memorial Hall Adventure Trail

We are pleased to report that the new adventure trail at the Memorial Hall play park was completed and opened on Tuesday 4th March. As the accompanying photograph confirms, the new recycled plastic equipment not only looks great, but it will provide a long-lasting, low maintenance alternative to what we had before.

Despite the appalling weather which accompanied the start of the installation, the contractors, Rhinoplay, have done a great job and we have been able to keep the closure of the upper play area to a minimum. Thank you also to Pauline Ryder and the Memorial Hall Committee for allowing the installation team to have access for the welfare facilities.



We also thank South Hams District Council for helping us fund the project through the Rural England Prosperity Fund.

Phil Smith, Modbury Parish

INTENDED MONTHLY FLAG HOIST AT PALM CROSS GREEN - April

Date	Masthead	Starboard Yard (Plymouth) - West	Port Yard (Modbury) - East	Event
01	RAF Ensign	FOUND	1918	RAF founded 1918
02	White Ensign	COPENHAG	1801 <sup>st</sup> sub	Battle of Copenhagen 1801
03	Union Flag	Falklands Flag	Ans1982	Start of the Falklands War 1982
04	NATO Flag	FOUND	1942 <sup>nd</sup> sub	NATO founded 1949
05	Army	KOHIMA	Ans1943 <sup>rd</sup> sub	Start of the Kohima Battle 1944
06	Union Flag	BOSNIA	Ans193 <sup>rd</sup> sub2	Start of the Bosnian War 1992
22	Plymouth Flag	BLITZ	Ans1942 <sup>nd</sup> sub	Start of Plymouth Blitz 1941
23	England Flag	St George Cross	GEORGE	England Patron Saint
24	Exeter Flag	BLITZ	Ans1942	Start of Exeter Blitz 1942
25	Poppy	ANZ1 <sup>st</sup> subC	Ans192 <sup>nd</sup> sub5	ANZAC Day 1915



## There is More than One Way to be a Great Litter Picker!

The Modbury Volunteer Litter Pickers continue their war on litter in our Parish. We do this either sporadically as a group, usually early on Sunday mornings, or individually, and it makes us feel good about contributing to making our parish clean and relatively litter free. We all know that litter is bad on so many levels, and unfortunately litter attracts litter.

Although we always welcome new members to the group with open arms, anyone can be a litter picker and do their bit to help. Of course, the litter shouldn't be there in the first place if people would behave responsibly and take pride in their environment, but that is a whole massive conversation, all of which requires behaviour change.

So if you like to walk on our lanes and you don't have any litter picking equipment as such, wear some strong gloves, take a lightweight bag and simply collect any rubbish you find en route, but please do not pick up dodgy items, e.g., chemicals, broken glass, sharp items or builders' rubble. We can supply a hi-vis jacket if you need one.

If you notice strewn tyres, car parts or fly-tipped items such as sofas, mattresses and builders' rubble, please report them on the South Hams website or alternatively let me know at [marina.auburn@gmail.com](mailto:marina.auburn@gmail.com) and I will report it to their collection service.

Your efforts will be rewarded with an immediate and visible difference in the environment where you live.

You can also join the Great British Spring Clean (run by Keep Britain Tidy) by pledging to pick up at least one bag of litter between March 21st and 6th April. Sign up on the Keep Britain Tidy web site. Did you know that only one in 10 parks in Britain are litter free? We want to make Modbury Parish not only plastic bags free, but also litter free!

Thank you for helping us. Please ring 07833214512 if you have any queries.

**Marina Auburn**

## MODBURY LUNCH CLUB

Modbury Lunch Club meets at 12.30 in the Memorial Hall on the last Friday of the month (any change to this is notified to members). A freshly prepared 2-course lunch is provided at a cost of £5. There is also a raffle for £1 at each meeting with members of Lunch Club donating the prizes.

We currently have three vacancies which are open to Modbury Parish residents and if you would like to join us please call Kim on 01548 830594 who will be pleased to take your details.

**Carole James & Marlene Winch**



Modbury Gospel Singers

**Modbury Gospel Singers**

**The Sound of Gospel Music**

**May Fair Concert**



**Modbury Memorial Hall**

**Thursday 8 May**

**Doors open 7:00pm**

Free entry | Cash bar | Donations to May Fair

 Modbury Gospel Singers  [www.modburygospelsingers.org.uk](http://www.modburygospelsingers.org.uk)



**Creative writing competition**

**NEW for 2025!**

**SPACE**

Modbury May Fair

Organised by the Modbury and South Hams Creative Writing Group.

**Theme : Space**

**Categories:**

<b>Adults</b>	Short story: maximum 2000 words Poetry: maximum 30 lines (No Minimum)
<b>Children (16 and under)</b>	Short story: maximum 2000 words Poetry: maximum 30 lines (No Minimum)

Please state name, contact number, category and age (if 16 or under) at top of piece. And make sure your entry has a title.

Email entries to [ajfield@btconnect.com](mailto:ajfield@btconnect.com) by Friday 2nd May



**Including:**

**Stone Walling • Retaining Walls • Groundworks  
Drainage & Irrigation • Driveways  
Patios & Paths • Gates • Fencing & Decking etc**

Family Business Since 1976  
Company No.3942610

**Competitive Quotes Given, Full Insurance**

Gatcombe Mill - Littlehempston - Totnes - TQ9 6LW

**Office:** Tel- 01803 864 871  
**Email:** [enquiries@afbrown-sons.co.uk](mailto:enquiries@afbrown-sons.co.uk)  
**Web:** [www.afbrown-sons.co.uk](http://www.afbrown-sons.co.uk)

## walk&talk

Our April walk dates are on the 1st, 8th, 15th 22nd and 29th April.

The venue and travel arrangements for each of the walks will be discussed and decided at the previous week's walk.

Walk Leader contact details:

Sue Rogers 01548 831289  
Jean Wright 01548 810029

**Sue Rogers**



MODWAG are organising a talk on Swifts & House Martins

### **Talk on Swifts**

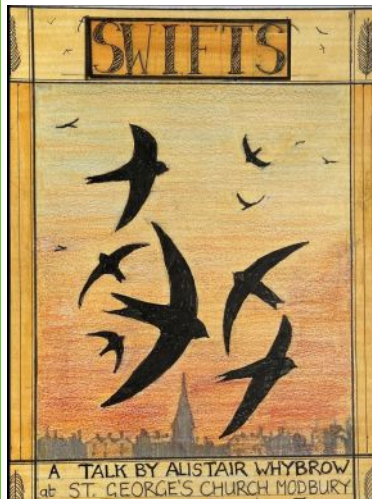
by

**Alistair Whybrow**

**April 1st, 7pm  
St George's Church,  
Modbury**

Free

Refreshments provided  
Donation to Devon Swift Society



**Carers Direct (SW) Ltd**

*Bringing Care To Your Home*



**Do you or a loved one need a little extra help?**

### **WE ARE HERE TO HELP**

Carers Direct SW Ltd is local not-for-profit care team of dedicated, well trained, friendly, local carers.

We can provide from one hour to 24-hour care.

Tasks undertaken include personal care, meal preparation, prompting medication, appointments and social outings.

Contact us for more information on:

01548 854358 or Email. [office@carersdirect-sw.co.uk](mailto:office@carersdirect-sw.co.uk)

You are welcome to pop in and see us at our office:

Unit 2N South Hams Business Park, Churchstow,  
Kingsbridge, Devon TQ7 3QH

**CARERS DIRECT (SW) Ltd**

**Est. independent  
LOCAL ELECTRICIAN**

**Dependent, honest  
and reliable service**



**LightWorks**  
Domestic Electrician

- Complete rewires and new builds
- New 18th edition Consumer Units/Garage Units
- Landlords & Insurance Certificates
- Domestic electrical fault finding
- Specialising in garden, kitchen and floor lighting from planning to certification

All work guaranteed/certificated  
Fully insured, qualified &  
registered with NICEIC



Call Phil for a free, no obligation quote or callout

**Tel: 07769 840012**

Email: [lightworks.electrics@gmail.com](mailto:lightworks.electrics@gmail.com)



## Modbury and South Hams Creative Writing Group

We at The Modbury and South Hams Creative Writing Group meet every month to read and discuss our work. We are a small group of lively individuals who write for all sorts of reasons. Each month we set ourselves a challenge or theme to hang our ideas on (although we have been known to completely digress).

Below is a submission which one of our members brought to our last meeting. The theme was 'Childhood' and this piece is a poem about memories of swimming as a child. It is also about growing up in a more general sense.

We are keen to welcome new members, so if you enjoy creative writing, why not join us. We meet usually on the first Saturday of the month at the Queen Elizabeth II Pavilion in Modbury at 10.00am.

[www.facebook.com/modburycreativewritinggroup](http://www.facebook.com/modburycreativewritinggroup)

Like most, I learnt in the sea,  
The freezing channel, all churned up.  
Six years old and hypothermic,  
Bundled in a big towel straight after  
Like a half-drowned kitten,  
Huddled behind the breakwater  
With a wadge of chocolate in my fist.  
'Soon warm up,' my mother said.  
I hated the seaweed. That stringiness,  
Clutching at my legs and heart like a tentacled monster.  
Someone had to carry me over it,  
Until we reached the clearer stretch, good for swimming.  
I remember a boyfriend did it, a chubby eight-year-old  
Named Ian, lauded as a hero by the grownups.

An early swimmer, but there was fear too.  
The Crystal Palace pool spanking new then.  
Never seen anywhere like it, a whole diving pool  
With its three boards ascending in height  
Peaking at the thirty-two-foot platform.  
Too high for me, but some of the boys  
Made names for themselves that year,  
A boy in my class – Alan Price,  
His tiny self lording it in the stratosphere.  
Me, I was content in the shallows  
Doggy-paddling effortfully for a ten-yard certificate.  
But at night I was overwhelmed, submerged in dreams:  
A rhinoceros prowled the emptied middle pool,  
A fifty-yard pen, contained for the moment,  
But rampaging, angry, about to break out.

A year older, another London pool,  
Another coach ride, a journey back in time –  
Manor Place baths, a Victorian shocker.  
Half-dead cockroaches in the gutters by the edge.  
Built to improve public health and safety –  
It didn't do wonders for mine.  
And then I had to go twice weekly, not once.  
Invited to Gala Training – I was promising –  
But I don't remember having a choice –  
There weren't any choices then.  
This was serious, spent the morning pounding up and down,  
Exhorted by a male stranger with a stop-watch  
Whose shout echoed around the walls and roof.  
My eight-year-old body was exhausted by lunchtime,  
A Victorian child in Victorian Newington.

And then Cap Ferrat. A warm respite,  
First time abroad, the difference barely believable.  
Diving again and again from a platform far from shore  
Into the deep unknown. First holiday without my family,  
Just a friend whose grandmother lived in Nice.  
Perfecting the line, the straightness of my torso,  
The angle of my hands. Each one better than the last,  
But still the fear – of speaking – my French embarrassing,  
And social skills only those of a shy eleven-year-old.  
My body, newly unreliable, despite its proficiency.  
And the discovery of sea-urchins, secret, dark and still,  
Shimmering spikes underfoot, hiding behind rocks  
In the deep clear waters of the Cote d'Azur,  
Piercing my heart as I trod water.

After the Cap ... an absence  
Despite the Grammar School in-house Bath Hall.  
Asked the Old Girls: memories of turning out  
Becostumed into the freezing playground weather  
Courtesy of an IRA bomb threat, shivering and giggling.  
Much later, boarded over, the fear of sinking  
As we sat exams in the swelter of seventy-six.  
Galas still it seems, but not for me.  
I chose tennis over swimming at the Dulwich playing field  
Where we lay and sunbathed on the warm tarmac.  
My head was full of land-locked boys and summer parties.  
But I do recall the spray system, a cold harbinger  
Before the entry to the main chamber,  
And floating and sinking in the in-between,  
The child just surfacing, gasping for air, and going deeper  
down.

**Mandy Field**





**Sarah Wyatt**  
Independent Civil Celebrant

**Weddings, Namings, Vow Renewals,  
Funerals – Celebration of Life**

MAKING MEMORIES WITH BEAUTIFUL CEREMONIES

Tel: 07794662903 Email: [circlecelebrantsarah@gmail.com](mailto:circlecelebrantsarah@gmail.com)  
[www.circlecelebrancy.co.uk](http://www.circlecelebrancy.co.uk)



**Coastal**  
Garden Services

**Tree Surgery & Landscape Management**  
**Contact: Andy Walker on 07793 056898**  
**[info@coastalgardenservices.co.uk](mailto:info@coastalgardenservices.co.uk)**  
**Working in the South Hams for 12+ years**  
**Fully insured - NPTC & RHS qualified**



## Modbury History Society

The next meeting of Modbury History Society will take place at 7:30pm on Monday, 14th April 2025 when Henry Wainwright will talk about 'Shipwrecks in Bigbury Bay.'

The Society meets at the QEII Pavilion, in the QEII Recreation Field in Chatwell Lane, Modbury, PL21 0FS, where there is ample parking. You are most welcome to come along to the talk as a guest for a fee of £5.

The March meeting had to be cancelled at the very last moment due to a water outage at the meeting hall, but it will be rescheduled shortly and I will let members know the new date.

If you would like further information please contact me at [rosiejaneparker@gmail.com](mailto:rosiejaneparker@gmail.com)

Rosemary Parker

### PROGRAMME OF SPEAKERS 2025

12<sup>TH</sup> MAY

BERNARD MILLS

RAILWAYS IN THE SOUTH HAMS

9<sup>TH</sup> JUNE

PAMELA VASS

SUFFRAGETTES IN DEVON

## Modbury Christmas Lights Latest

A total of six members of the Christmas Lights membership turned up for the 2025 Annual General Meeting in the Exeter Inn on 25th February. The following were re-elected to serve on the Committee for 2025/6: Tony Price – Chairman, Phil Smith – Secretary, Gerry Mc Allister, David Scott, Peter Lowe and Ira Young – ordinary members. There was no volunteer to serve as Treasurer, and so the recruitment to this vacancy will be a priority for the new Committee.



The meeting confirmed that the date for next winter's Lights-On Evening will be Friday 28th November 2025.

As always, the contribution of volunteers to help with the installation of the lights and the organisation of the Lights On Night is key. If you can help us, please offer to do so later in the year.

Phil Smith

Secretary Modbury Christmas Lights Committee

## MODBURY WI

After nine years and following much deliberation, Modbury WI closed after its March meeting. The Modbury WI was inaugurated in January 2016 and Connie O'Neill became its president, a position she held for several years. Angela Hickman then took over the reins and members owe a great debt of gratitude to them and to Gill Watts (whose IT expertise as treasurer has been invaluable), for their commitment, hard work and all the fun and friendship we've shared.



Unfortunately, like many organisations, Modbury WI never fully recovered after the pandemic, when numbers fell as people preferred to stay at home rather than venture out in the evening. Increased bureaucracy and a fall in numbers made members decide they would rather continue on a more informal basis without rigid structures. Friendships and fellowship will continue to flourish.

Anyone interested in joining the WI should know that there are institutes in Yealmpton, Ivybridge, Ringmore, Loddiswell and Aveton Gifford and further information can be found on the Devon Federation of WIs website.

Rosemary Parker

## Modbury Cricket Club Latest

Pre-season training at Ivybridge Sports Centre is now well under way and will continue **every Sunday until 13th April from 10:00-12:00**. Thereafter, training will take place on **Thursday evenings from 1800-2000** in the Club's nets at the QE2 Recreation Ground. Our first match is against Ermington CC on Thursday 1st May. It is a 20/20 game scheduled to start at 18:00.

If you are interested in joining us please come along to a training session or contact me for more information on 07759 282404.

Phil Smith





# MODBURY MESSENGER

## COMMERCIAL ADVERTISING RATES MODBURY MESSENGER 2025

SIZE	Size - can be portrait or landscape	1 month (per insertion)	3-11 months (per insertion)	12 months (per insertion)	12 months (Year total)
1/8 page	45mm x 65mm	£30	£26	£16	£192
1/4 page	90mm x 130mm	£60	£50	£30	£360
1/2 page	130mm x 180mm	£108	£86	£50	£600
1 page	180mm x 250mm	£192	£148	£80	£960

The Modbury Messenger is an all colour publication, no preferential rates for black & white advertisements.

To advertise in the Modbury Messenger, contact the Editor, Lynne Barnes, via email on [modburymessengercic@gmail.com](mailto:modburymessengercic@gmail.com) with details of the size of the advert and how many months you wish to advertise for.

### Modbury Messenger May 2025

The copy date for the May 2025 Modbury Messenger is **10th April**. Please email all articles, notices of events and paid advertisements to [modburymessengercic@gmail.com](mailto:modburymessengercic@gmail.com).

The Modbury Messenger is published by Modbury Messenger CIC and is printed by ESP Print. The views expressed in the Messenger do not necessarily represent those of Modbury Messenger CIC.

The Editorial Committee reserve the right to précis/abbreviate any copy submitted for inclusion in the Modbury Messenger. Their decision is final. The contents of the Modbury Messenger may not be reproduced in any form without the prior written permission of Modbury Messenger CIC. Guidance for submitting material is available online at <http://modburymessengercic.co.uk/about.html>

**Persons submitting entries with art or photographs not drawn or taken by themselves must confirm they have obtained copyright permission, or agree to pay any copyright fine which is subsequently raised**

[modburymessengercic@gmail.com](mailto:modburymessengercic@gmail.com)

### MODBURY MESSENGER CIC

Modbury Messenger CIC is a Community Interest Company and as such is registered by the Registrar of Companies for England & Wales, Northern Ireland or Scotland. A Community Interest Company is a special type of not-for-profit limited company which exists to benefit the community. The purpose of Modbury Messenger CIC is to disseminate information about events, notices and articles of interest to the people of Modbury and it does this by publishing the Modbury Messenger, a printed newsletter, every month with 1000 copies delivered to homes and businesses within the Parish of Modbury. An online copy of the Modbury Messenger is available to neighbouring communities, advertised via social media and on our website [modburymessengercic.co.uk](http://modburymessengercic.co.uk).

Advertisers are charged a fee for advertising in the Modbury Messenger and this covers the cost of producing the Modbury Messenger. The Board of Directors, Company Secretary, Editor, Proofreaders and Distributors are all volunteers.

**Directors of Modbury Messenger:** Diana Lynne Barnes & Bernard Taylor.

**Company Secretary:** George Rosevear FCIS.

**Treasurer:** Edward Holt

**Editorial Committee:** John Bower, Lynne Barnes, Ira Young.

Modbury Messenger CIC has produced the Modbury Messenger as an independent CIC since September 2018. Previously, it was published by Modbury Parish Council

# THE FLOOR SHOW



Your Local South Hams  
**Carpet & Vinyl Flooring Experts**

7 Church Street, Modbury,  
Devon. PL21 0QW

**01548 830909**

[thefloorshowmodbury@gmail.com](mailto:thefloorshowmodbury@gmail.com)

[www.thefloorshowmodbury.co.uk](http://www.thefloorshowmodbury.co.uk)

## GREENLANDS NURSERY

Higher Wizaller, Modbury, PL21 0SE



**Shrubs and Perennials**

**Holly Wreaths. £8 & £12**

**Non drop Christmas Trees  
£5 per foot**

**Jack's Magic Compost**

Deliveries can be arranged

**Local family run business excellent value**

Tel: 01548 550491 or 07534 611587

Email [brendagreenlandsmodbury@yahoo.com](mailto:brendagreenlandsmodbury@yahoo.com)

We also have a good selection of marble based garden ornaments



- Bathroom and kitchen fitting
- Floor and wall tiling
- Leaking toilets/radiators/taps etc
- Radiator replacement and additions
- Shower pumps
- Links with local builder/electrician for larger installations if required

## Chapman & Sons Plumbing Service



**Small jobs welcome  
Reasonable rates  
Free quotes**

**Telephone 07468 466380 now  
for a speedy and efficient service.**

  
**MARCHAND PETIT**  
COASTAL, TOWN & COUNTRY

**For customers who expect more  
from their estate agents.**

Our Modbury team has a wealth of South Devon Estate Agency experience, covering the coast and countryside. Whether you're looking to buy or sell, contact our friendly and knowledgeable team today.

**SALES | LETTINGS | AUCTIONS, CGT, IHT &  
PROBATE VALUATION**



01548 831163 | [modbury@marchandpetit.co.uk](mailto:modbury@marchandpetit.co.uk)  
4 Broad St, Modbury, Ivybridge PL21 0PS  
[www.marchandpetit.co.uk](http://www.marchandpetit.co.uk)





ERMINGTON HOUSE  
Quality Residential Care



Ermington House

CQC overall rating

Good

Good

6 January 2021

## Quality Care 24 hours a day in an idyllic location

- 24-hour Person-Centered Care
- Highly trained, caring and attentive staff
- Daily stimulating entertainment and activities
- Home cooked, nutritional and appetizing meals
- Safe and secure environment
- Daily visits by District Nurses
- Regular visits by Chiropodist, Hairdresser, Dentists, Opticians and GP's
- Beautiful personalized en-suite bedrooms
- Respite and Long-term Care

*Ermington House, Ermington Nr Ivybridge, Devon PL21 0LQ*  
*Email: [enquiriesermingtonhouse@outlook.com](mailto:enquiriesermingtonhouse@outlook.com) | Tel: 01548 830076*

Victoria  
Bolt exp UK  
estate agents

# Thinking of selling your home?

We offer a fresh, local and personal  
approach to selling your home

Bespoke service tailored to you

Out of hours viewings

Combined 21 years of experience

It takes just 60 seconds to book a free  
home valuation on our website:

[victoriabolt.exp.uk.com](http://victoriabolt.exp.uk.com)

01752 916091