



Illustration - Paddy Wynder

For the People of Modbury & Brownston

Volume 24, Issue 309 - December 2024

REMEMBRANCE EVENTS 2024



engraved were read by Honor Gibson, Isla Hemsley and Reuben French. The trumpeter player was Tansy Waldron.

As the Modbury Chief Yeoman I did hoist 9 different flags on both Remembrance Sunday and Armistice Day and the photograph does show those at the War Memorial on Armistice Day.

Remembrance has happened in the UK ever since the ending of the Great War at the 11th hour of the 11th month, 1918 and this year 2024 did see several differences. This year, Remembrance Sunday (always the 2nd Sunday in November) happened before Armistice Day (11th November) and the Royal British Legion did note both days. It was really encouraging to see so many people attending St Georges Church, with Rev. Oli Long, the new curate, leading his first Remembrance Sunday service and also the new Lay Reader, Gil Snook, preaching.

What was good, was the number of young people taking part; Carlotta Bonell carried the Union Flag in front of me as the RBL Standard Bearer; the Scout Flag bearer was Lily Wycherley; the Scout Wreath Bearer was Abi Rossiter; the Cubs Flag Bearer was Ted Yalden and the Cubs Wreath Bearer was Jack Ware. At the War Memorial, the names

David Scott
RBL Standard Bearer



CHRISTMAS BINGO

11TH DECEMBER 2024
EYES DOWN 7:30PM
ALL WELCOME!
MODBURY CLUB



Fitness studio & 24/7 Gym

BOMBERS
PHYSICAL TRAINING

Unit A
Pearse Gardens
Modbury
PL21 0FX

★★★★★
Over 100 5 star reviews

Contact us to book
your 'No Sweat Intro'

www.bomberspt.co.uk gym@bomberspt.co.uk



GEORGE H.W. ROSEVEAR
& COMPANY
A DIVISION OF HOLBROOK ASSOCIATES

ACCOUNTANCY, TAXATION AND
COMPANY SECRETARIAL SERVICES

01548 831427

3 MODBURY COURT, 32 CHURCH ST.,
MODBURY, DEVON, PL21 0QR
george@holbrookass.com

Tall Orders Landscaping

All aspects of gardening

- *Hedge trimming / Tree work
- *Grass cutting - Lawns to Paddocks
- *Fencing / Turfing / Stump grinding
- *Weed control / Lawn Scarifying

Logs Supplied

- *Locally sourced hardwood
 - *Delivered in dumpy bags / nets
- Tel . 01548 831139 / 07967258318



Modbury taxi



Contact
Tel : 07455393693

Modbury Private Hire Taxi

Pre booking is required for all local and longer distance journeys. This includes daytime, evening and airport transfers. Prices are agreed on booking.

Please don't hesitate to contact us if you have any questions.

07455393693

MICHAEL R HAGGER

Professional Painter & Decorator

City & Guilds Advanced Craft trained

Over 40 years decorating
experience, with the last 26 years
in the wonderful South Hams.

Fully Insured



For a friendly,
no obligation
estimate or
reference

Tel: 07977445521



South Hams
Wills & Probate

*Your local cost-effective
alternative to solicitors*

- Wills -
- Probate -
- Lasting Powers of Attorney -
- Inheritance Tax Planning -
- Trusts -

Call Vanessa (Chartered Accountant)
on 01548 858806
mail@southhamswills.co.uk
www.southhamswills.co.uk

Designed Space
Ltd

Architectural Drawings
and
Planning Applications

Contact Alayne Harris B.I.D.
0755 191 0874
info@designedspace.co.uk

Based in Modbury



Sarah Wyatt

Independent Civil Celebrant

Weddings, Namings, Vow Renewals,
Funerals – Celebration of Life

MAKING MEMORIES WITH BEAUTIFUL CEREMONIES

Tel: 07794662903 Email: circlecelebrantsarah@gmail.com

www.circlecelebrancy.co.uk



Coastal
Garden Services

Tree Surgery & Landscape Management

Contact: Andy Walker on 07793 056898

info@coastalgardenservices.co.uk

Working in the South Hams for 12+ years

Fully insured - NPTC & RHS qualified



MODBURY PLAYERS PRESENT

The Pantomime 2025

RAPUNZEL & FRIENDS
Modbury Memorial Hall

Thurs Jan 23rd 7.30pm

Fri Jan 24th 7.30pm

Sat Jan 25th 2.30 & 7.30pm

Tickets £10 Adult £5 Child

On sale from 6th Jan 25

Modbury Post Office



**SEASONAL PARKING
TICKETS AVAILABLE
— FOR —
MOUNT FOLLY FARM
FIELD CAR PARK
AT BIGBURY-ON-SEA
AND CHALLABOROUGH
£50 FOR A 2025
CALENDAR YEAR**

**PLEASE CONTACT
INFO@BIGBURYHOLIDAYS.CO.UK
TO FIND OUT MORE**

May Fair 2025 Urgently Needs New Chair Person

A new Chair is needed for May Fair 2025 as, unfortunately, I no longer have the time to devote to steer this excellent event.

The role is very much a co-ordinating one as many of the activities are organised individually by our loyal, long term helpers.

There will be support from the existing Committee Members who each have a role to play but an overall co-ordinator is imperative.

I really can't stress strongly enough how important a replacement is and I sincerely hope that someone will come forward by

contacting me on pipainsworth@btinternet.com



Pip Ainsworth



Walkaball

Walking Football
Ladies & Gents welcome





Modbury Recreation Ground (PL21 0FS)
Thursday 18:30 - 19:30
Fun, Fitness and Friendship
To book your place email walkaball@yahoo.com or
Contact Steve on 07871 310987

JUST PLAY!
BY ENGLAND FOOTBALL



KINGSBRIDGE *Christmas* CRAFT MARKET

Locally made crafts direct from the makers

December 2nd to 24th (excluding Sundays)

& December 27th to 28th

10:00 until 4:30



Market Hall, Fore Street Kingsbridge TQ7 1PP

**BIGBURY
CAMPING
BARN**



**Cold plunge-pool for invigorating
and stimulating cold water therapy.
Free your mind and soul.**

**Contact Cathy 01548 810079
info@bigburyholidays.co.uk
www.bigburyholidays.co.uk**



Tailor-made **travel
arrangements to
Africa and Latin
America.**

35 Church Street, Modbury • 01548 858 272
sales@distinctiveamericas.com
www.distinctiveamericas.com

**DISTINCTIVE
AFRICA**



**DISTINCTIVE
AMERICAS**

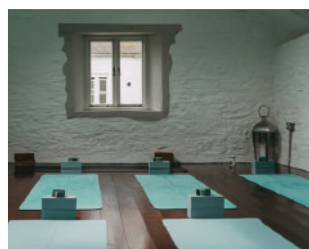


Modbury Therapy Centre Health and Wellbeing Centre

Offering Complementary Therapies

Acupuncture, Reflexology, Massage Therapy, Homeopathy, Counselling,
 Psychotherapy, Nutritional Therapy, Yoga, Pilates, Meditation,
 Cognitive Behavioural Therapy, EFT, Life Coaching, Sound Healing

www.modburytherapycentre.co.uk
enquiries@modburytherapycentre.co.uk
 07973 367517



To advertise your business in the Modbury Messenger, please contact us at
modburymessengercic@gmail.com
www.modburymessengercic.co.uk

Dementia Friendly Communities

Do you know someone with dementia, do you care for someone with dementia, or have you been a carer in the past, have you been diagnosed with dementia or are you interested in supporting community developments assisting people with dementia? If so, Modbury Parish Council would like to hear from you. We are interested in gathering your views on how we can make our town more 'Dementia Friendly', both for those living here and for those who visit.



According to Alzheimer's Research UK, there are 982,000 people living with dementia in the UK (at dementiastatistics.org). They go on to say that this is predicted to rise to over 1.4 million by 2040. Research has indicated that communities are vital in helping people with dementia to live well and continue to remain a part of that community. But what does that mean in practice? How can communities help both people with dementia and those who care for them?

Modbury Parish Council has joined the Four Rivers Dementia Alliance; this is a partnership of parishes, towns and community groups which has been set up to develop communities where people living with dementia and their families are understood, respected and supported, and thus made confident that they can continue to contribute to community life. More information can be found about the alliance on their website at www.4riversdementia.org.uk

Small steps can make a big difference, from simply raising awareness within the town or making sure that the notices and signs displayed are Dementia Friendly, and can help those who may struggle with the everyday tasks we take for granted.

If you are interested in helping to shape this work, please get in touch with Cllr. Barbara Price, by email on barbaraprice@modburyparishcouncil.gov.uk, by phone at 07739 752095, or drop into the Parish Council Office on a Tuesday between 10am – 4pm or on Saturdays from 10 - 11am and register your interest.

Barbara Price

Modbury Phone Repairs & Hardware Shop



Since I opened my iRepair shop in Modbury in July 2023, I have been busy repairing electric items such as mobile phones, computers, laptops, tablets, MacBooks & Nintendo Switch faults, and perhaps surprisingly, also GHD hair straighteners. It didn't take me long to decide that I ought to be retailing some items also, such as chargers, leads, power banks, ear phones, SIM cards, GHD hair straighteners and more. Lately, I have realised that, apart from my main business of repairing (and selling) gadgets, there is a gap in the market locally for retailing other items, so I have now decided to expand my range.



The loss of our hardware shop led me to now stock items such as batteries, brillo pads, bin bags, light bulbs, A4 photocopying paper packs, and many other small household items. It's well worth calling in to see if I have any such items that you may need. I now stock firelighters and logs for fires and woodburners, and even Modbury honey made by Justine and Duncan.

Most of my work is still iRepair work such as screen problems, battery and charging failure. My shop is open from 10 a.m. to 6 p.m. Monday to Saturday, and I encourage 'drop ins', but if you prefer, my contact details are below.

Need Help? Call the Gadget Repair Centre

Spencer Neale

iRepair Gadgets SW is on Facebook, Instagram & Google and my contact details are:

Tel: 07920 461079

Email: info@irepairgadgetssw.co.uk

Website: www.irepairgadgetssw.co.uk



Modbury Parish Council Meeting

Tuesday 12th November 2024, 7pm



MODBURY
PARISH COUNCIL

All eight councillors were present and Cllr Bernard Taylor of South Hams DC, together with four members of the public. Apologies were received from Devon CC Cllr Rufus Gilbert.

Public Forum:

- A member of the public pointed out that the middle white line and cats' eyes are missing on the A379 road between Edmeston Gate and Goutford Bridge.
- Opposition to the required use of smartphones to pay parking charges was expressed.

South Hams District Council Report by Bernard Taylor

The missing streetlight at the junction of Brownston Street and Silverwell was followed up by Bernard Taylor who will chase further. DCC are aware and expect to sort that out in the New Year. Comments were made that there is a serious public safety issue while the light is out.

Matters arising from the minutes of the Council meetings on the 8th October 2024

Youth consultation update: Cllr Barbara Price is in contact with the SHDC lead on a consultation exercise currently underway, and with a broader remit of economic development, in Ivybridge and Kingsbridge. Part of that is a consultation process with young people. There is no capacity to include Modbury in that process so MPC will perform its own consultation. Local farmers are also keen to engage with the process.

Finance

- The Palm Cross estate rental parking charges will be increased by inflation.
- The Modbury car parks will be free to use on the three Saturdays before Christmas 2024. MPC are paying for the lost revenue on one of those Saturdays, SHDC are covering the other two, in order to help the traders.

Community Engagement

- It was noted that there will be a community transport survey from South Hams Community Action with which the Working Group will engage.
- We have been working with the Dementia Alliance re making Modbury more dementia friendly. See the article in the current Modbury Messenger.

Policy: Interviews for the post of Parish Clerk have taken place and a candidate has been offered the job subject to references.

Highways

- The Community Speedwatch Programme is in the process of being set up; the statistics of vehicle speed on Barracks Road have been downloaded from the camera there; the application for the group is with Devon and Cornwall Police. This will help our application for reduced speed limits which was submitted some time ago.
- SHDC has proposed a new charging scheme for their car parks. This would see South Hams residents keep much the same charges, but they would be greatly increased for non-residents. MPC are opposed and will reply to SHDC accordingly.

Maintenance Update

- The most significant point is the closure of the Memorial Hall adventure trail for health and safety reasons. It needs removal and then renewing; the proposal is to do so as one whole scheme in recycled plastic which will allow for a minimum 25-year warranty. Four companies have been approached for quotations for the work.
- Modbury litter pickers have recommenced their group activities, for which MPC are grateful.

Sustainability update

- Regarding the flooding at Orcheton, some work has been done, and Cllr Ann Turner continues to follow up tenaciously with all the bodies involved as much more work is required.
- Investigations are ongoing into the potential for solar panels, and other energy-saving measures, on community buildings in Modbury.
- South West Water will schedule their installation of ultraviolet treatment at the Modbury sewage works for 2027.
- Sustainable South Hams will bring their energy-saving roadshow to Modbury if invited by the Council.

Date of next meeting: Tuesday 3rd December 2024.

Tony Price

Grants available from Modbury Parish Council

If you are part of a small group or not-for-profit organisation looking for seed funding or a small grant, please send us your application now so that we can consider as we budget for 2025-2026.



Please go to our website for further details: <https://modburyparishcouncil.gov.uk/grant-funding>

Sally Smale, Modbury Parish Clerk

MODBURY INN CLOSES

Sadly the Modbury Inn closed its doors to customers on the 27th October. To mark the occasion David Scott, Modbury's Town Crier, wrote the following:

OYEZ OYEZ OYEZ

Today, Sunday 27th October is the last Sunday in the Holy season of Trinity and tomorrow the Church remembers the feast day of St Simon and St Jude – this latter saint is the patron saint of lost causes!

However, as many persons do now know, this is the last day, (at present) for the Modbury Inn here in Brownston Street, as the doors are closing at 4pm this afternoon.

Ever since I moved to Modbury in 1973 and since becoming Town Crier in 1998, I have always known a pub being here at the top of Brownston Street. There have been several publicans during these years, but I would personally, as Town Crier of this town, want to express the enormous gratitude of the whole town to the present publican, Mr Craig Worthington, for all his untiring efforts during the last four years to create a great venue for both drinking and dining. There have been weekly musical evenings, quizzes, socials galore, breakfasts, BBQs in the garden and I should also mention all the events which Craig, Leah and their team have organised in many areas – Church, Memorial Hall, MARS building and others. Craig has been an outstanding person and also so willing to help all.

I now do call upon all here to give 3 rousing Modbury Cheers for Craig, Leah and all their team for a most memorable four years and do wish everyone of their large team much success in the future.

Hip, hip, hip, hooray! God save the King.

OYEZ OYEZ OYEZ

David Scott



Christmas Lights
SWITCH-ON NIGHT
FRIDAY 29TH NOVEMBER, 6PM
CHURCH STREET, MODBURY
Come and enjoy the festive atmosphere!
FATHER CHRISTMAS GROTTO
MUSIC - LANTERN PARADE
SHOPPING - REFRESHMENTS

NEST DESIGN
25 Galpin Street, Modbury, Devon, PL21 0QA
www.nestdesignstudio.co.uk 01548 830409
architects
Architects Registration Board
ARCHITECTURAL DESIGN & SERVICES
contact Jon & Emily Sullivan to discuss your requirements further

CHRISTMAS MARKET
IN ST GEORGE'S CHURCH
DECEMBER 7TH 11AM - 2PM
LIGHT LUNCHES & CRAFT STALLS
REGIFTING & HOMEMADE PRESERVES
HANDMADE CHRISTMAS DECORATIONS
CHILDREN'S CHRISTMAS CRAFT ACTIVITIES
BOTTLE TOMBOLA
CHOCOLATE TOMBOLA
RAFFLES
SUPPORTING ST GEORGE'S CHURCH

Mayflower Chorus

The chorus Mrs Gill directs will be performing in our very own Modbury Church.

It will be a special evening with guests Fortuity Quartet, who are the most successful British Women's Quartet, having competed Internationally scoring in the top 10 in the world!

Please come and join us for a very special evening.

Sarah Gill



Mayflower A Cappella
Chorus presents

Flying high

STARRING MEDAL WINNING QUARTET:
FORTUITY



SATURDAY 30TH NOVEMBER

7PM START

ST GEORGES CHURCH
MODBURY
PL21 0QN

ALL TICKETS
£8.50

CONTACT SUSIE
07581 447 268 OR
PURCHASE FROM
MARCHAND PETIT
MODBURY

IN SUPPORT OF THE

THE primrose
FOUNDATION

CHARITY NO. 1064277

MAYFLOWER
A Cappella Chorus



AUNE VALLEY IN MODBURY

6 Church Street, Modbury



Free Local Delivery*

*Terms & conditions apply.

10% Off
with this advert

Bring this with you to receive 10% off in the shop or cafe. Terms & Conditions Apply

www.aunevalleymeat.co.uk

imakewebsites.



NEED A NEW
WEBSITE?

I CAN MAKE IT!

Contact Vicky
01548 831910
www.imakewebsites.co.uk

MODBURY PARISH COUNCIL

Modbury Parish Council Office, 1 Modbury Court, PL21 0QR 01548 312321 email parishclerk@modburyparishcouncil.gov.uk

Your Councillors are:

Bill Cole	01548 830913
Richard Foss	01548 721420
Barbara Price (Chair)	07739752095
Tony Price	07801837129
Phil Smith (Vice Chair)	07759282404
Dave Trigger	07808742372
Ann Turner	01548830606
Sarah Wyatt	07794 662903

richardfoss@modburyparishcouncil.gov.uk
barbaraprice@modburyparishcouncil.gov.uk
tonyprice@modburyparishcouncil.gov.uk
philsmith@modburyparishcouncil.gov.uk
davetrigger@modburyparishcouncil.gov.uk
annturner@modburyparishcouncil.gov.uk
sarahwyatt@modburyparishcouncil.gov.uk

How can we help you? Councillors run drop-in surgeries on Sat. 10-11am in the Parish Office at 1 Modbury Court. The Parish Clerk is in the Parish Council office on Tues, 10am – 4pm. Call into the office, phone, email or come along to our meetings at 7pm in the Pavilion, QEII Recreation Ground on the first Tuesday of every month and speak in the public forum.

Devon County Councillor (Salcombe Division):

Rufus Gilbert Tel: 01548 856659
rufus.gilbert@devon.gov.uk

South Hams District Councillor Charterlands Ward:

Bernard Taylor Tel: 01548 830844
Cllr.Bernard.Taylor@southhams.gov.uk

A great Christmas shopping day in Modbury

Saturday 7th December

It's not too late to finish your Christmas shopping or even start it, in this wonderful town.

The shops are packed with Christmas gift ideas and lovely foodie items.



There's a Christmas Market in the White Hart from 9.30am-12.30pm

And a

Christmas Market in St George's Church from 11am until 2pm

Why not stay for something to eat, a coffee and a Christmas catch up with friends and neighbours in the lovely cafés, pubs and takeaways

Book your wellbeing, beauty and gym sessions too.

Modbury welcomes you!

Thank You, May Fair!



Modbury Wildlife Action Group would like to thank the May Fair Grants Committee for their kind donation towards purchasing equipment to support our activities this year. We are now the proud owners of a bat detector, sweep nets and collection kits for bugs, and are planning to buy a moth trap for identifying and then releasing moths. The grant doesn't cover all of this, but it was a nice boost. We

have been learning to use bat detectors this autumn, with help from the Bat Conservation Trust, and hope to run a community bat walk next year for those interested.



Moths have been highlighted in St George's churchyard and also at the QEII Recreation Ground, during the Naturefest last July. Many children took part in bug hunting too at Naturefest, and the equipment was used for this as well as surveying other insect species in the churchyard.

If you are interested in joining our mailing list and/or getting involved with future events and activities please contact our secretary, annc.turner@hotmail.co.uk



Caroline Bower
ModWAG



www.let-it-out.co.uk

*The flexible approach
to letting your holiday home*

Gail Critchlow
07889 628514

Liz Baker-James
07388 673228





Modbury Mission Community

To know Jesus and make him known



St George's Church, Modbury



KIDS' CHURCH - Kids' Church meet in Modbury Primary School. Parents, please drop off your Explorers (age 9+) and Discoverers (age 6-8) at the school from 9.15 am where they will be met by one of the leaders. After Kids' Church, the youngsters will be taken to St. George's to be with their parents at the end of the service. Climbers (age 0-5) will remain in St. George's, meeting their leader to be taken to the Lower Vestry. If you have any questions regarding Kids' Church please contact Sara Chapman on s.chapman@modburyteam.org.

Rev. Matt Rowland

01548 830260

matt.rowland@modburyteam.org

December	Service	Service Leader
Dec 1st	Holy Communion with Kids' Church 9.30 am	Rev. Oli Long
Dec 8th	Holy Communion (BCP) 8.00 am All - Age Christingle 9.30 am	Rev. Matt Rowland Rev. Matt Rowland and Helen Pickard
Dec 15th	Holy Communion with Kids' Church 9.30 am Rooted Contemporary Carol Service. 6.00 pm	Rev. Matt Rowland Rev. Oli Long
Dec 22nd	Traditional Carol Service 6.00 pm	Rev. Oli Long
Dec 24th Christmas Eve	Nativity Service. 4.00 pm Holy Communion. 11.00 pm	Sara Chapman and Gil Snook Rev. Matt Rowland
Dec 25th Christmas Day	Holy Communion 10.00 am	Rev. Simon Franklin
Dec 29th	Team Service 10.30 am	Rev. Oli Long

CHRISTIAN COMMENT: Christmas just for the children?

For many of us, the Christmas story is something heartwarming for the children, but there are too many unbelievable events: signs in the stars, predictive dreams, supernatural beings, a miraculous conception for it to be anything more than wishful thinking.

Yet, in many ways, there are many supernatural entities that we all believe in, things like human rights, dignity, equality or justice. You can be a believer in things that cannot be measured by science or tested in laboratory.

You may be utterly convinced that all there are atoms and molecules, but you too, like Christians, believe in a 'miraculous conception'. The big-bang theory upholds the universe suddenly and instantaneously burst into life. There was nothing and then there was something. No life and then life. You are a believer in a miraculous conception.

We all hold onto beliefs that take faith to believe in, not just Christians!

As always you are more than welcome to come to any of our services and events over the Christmas period. Come and enjoy the old, old story, but also come with an open mind that what we assume is unbelievable may not just be a children's story but a true story.

Rev. Matt Rowland

St Monica's Roman Catholic Church, Modbury

Mass weekly at 5.00 pm on Wednesday

St Austin's Priory Roman Catholic Church, Cadleigh

Mass weekly at 11.30 am
on Sunday

Phone: 01752 895888

E-mail ivybridge@prcdtr.org.uk



THANKSGIVING CANDLES

Light a candle in memory of your loved ones this Christmas at St George's

Names and donations to:

Gill West (01548 830135)

Mob (07849253605)

Or deliver to 24 Brownston St
before Friday 13th December please



All proceeds in aid of St George's Church

MODBURY SCHOOL NEWS

As the days get shorter and the "anticyclonic gloom" means we need to have the lights on all day, the atmosphere in school has been bright and lively, and plenty has been happening in the classrooms.

The children very much enjoyed being involved in Apple Day, and Y6 spent a fun afternoon harvesting the fruit in the Millennium Orchard. We have a few apple trees in the forest school area, and they are now nearly big enough to give us our own fruit.

Before the half-term break, we had a visit from a former teacher who is now a published author. "Mr. J" came to talk to everyone about how he got the ideas for his book "The Sofa Troll", and about the long process of producing a book. He explained that it took several years from the initial idea to publication, which really surprised the children.

On the same day, we had a whole school celebration of different cultures - connecting Geography facts to information about foods, customs and music from various parts of the world. It ended with everyone learning some Brazilian samba moves from Y6, we were all truly in carnival mood as we left for our week's holiday.

The return from half term with 100% attendance was impressive. In the first week back, we have enjoyed new menu choices which have gone down well. A large number of children had flu-prevention immunisation so we should be heading for a healthy winter. A morning "Wake and Shake" activity will be organised by staff before registration in the mornings, from next week, to help children to be alert and ready to learn.

Football has always been popular in school and our Y6 team celebrated a high-scoring victory in their first-round match against Wembury. We wait to see who our next opponents will be. England Football have recognised that we offer equal opportunities for both boys and girls to play football, and we received a smart trophy to celebrate this.

Of course, we all know what the next big event will be! Christmas plans are being made, songs chosen and excitement is building. Hopefully, there will be a dry evening for the lantern parade/lights-switch on, and we will be joined by plenty of children, with their parents, to enjoy walking down Church Street to start Modbury's festive season. We appreciate the time and work put in by the PTFA to support this event.

Modbury Primary School



Sarah Gill took this beautiful picture of Modbury on 10th November from the Memorial Hall car park, and kindly let us reproduce it in the Modbury Messenger.

MODBURY PLAYERS PRESENT

A CHRISTMAS EXTRAVAGANZA!

- FOR ONE NIGHT ONLY -

MODBURY MEMORIAL HALL
SATURDAY DECEMBER 7TH
7.00PM - 11.00PM

JOIN US TO SINGALONG TO YOUR FAVOURITE
CHRISTMAS SONGS, AND BE ENTERTAINED WITH
A QUIZ AND DISCO

BE READY TO DANCE, SING AND
SHAKE YOUR THING TO YOUR FAVOURITE SONGS
FROM A DJ DISCO

ADULT: £10.00 CHILD £5.00

TICKET INCLUDES:
- WELCOME DRINK -
- CANAPES -
- QUIZ (WITH PRIZES!) -
- DISCO -
FULL BAR AVAILABLE

TICKETS FROM MODBURY POST OFFICE

Modbury Event – A Great Success

The sound of laughter escaping from a packed and beautifully turned-out Memorial Hall was an infectious and uplifting tonic on Friday 8th November. Messrs Otway and Barrett, an ever-present touring act for over half a century, may not have been generally well known in the area previously, however, their performance will never be forgotten by those in attendance.

It is impossible to think of an act in any way similar to Otway and Barrett's and therefore a virtuoso display of flamenco guitar by Modbury's very own Paul Woodcock to open the evening's entertainment was appropriate and well received by an appreciative audience.



After a brief introduction, a weary looking Wild Willy Barrett took the stage shortly followed by an exuberant John Otway clearly defining the tone of the hysterical act ahead. The deadpan and dry witted Barrett provided the perfect foil during the evening for Otway's ridiculously optimistic

persona in true British comedy duo style. But Barrett is far more than a sidekick with his extraordinary musicianship evident throughout, utilising a variety of unusual instruments and even a wheelie bin! Meanwhile Otway's infectious enthusiasm and inept disguise engages the audience to support his brilliantly conceived song repertoire.

Otway was at the door as the audience arrived, during the interval and as they left, chatting and signing anything almost as if the performance was continuing. The tour poster says 'Final Major Tour', but after the rapturous reception received by the end of the show, Modbury would clearly welcome them back anytime.

Rob Giles

K Woodward Home Improvements

- Bathrooms and Kitchens
- Extensions
- Property refurbishment
- Structural Alterations
- Tiling and Flooring

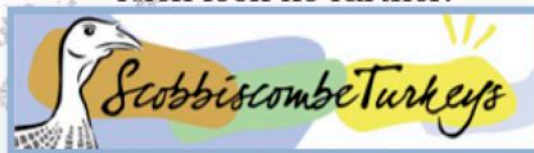
Multi Skilled Professional Approach
to Improving your Home



Tel 07772 921544

keithwoodward1220@gmail.com

Looking to make your Christmas extra special?
Then look no further!



**Bronze, free-range turkeys traditionally reared and prepared
on our family farm for the finest flavour at Christmas.**

Collect your turkey direct from the farm (**Kingston**) or at one of our
collection points: **Lee Mill, South Brent or Wembury.**
Delivery also available.

Order online: www.turkeysfromdevon.co.uk
Or for more information contact The Walters Family
turkeysfromdevon@gmail.com
or phone 01548 810259

Accredited and annually inspected for high welfare and traditional quality by the
Traditional Farmfresh Turkey Association

Modbury Litter Pickers: An Update on our Activities and a Thank You



Throughout the year members of the Modbury Litter Pickers group pick up litter, mostly individually or in pairs, on allocated patches around the town.

At this time of year, when the banks beside the lanes around Modbury have been cut back and the traffic is quieter, we go out in small groups to clear litter from these lanes. You will see us out and about, with our high-viz jackets, traffic cones and warning triangles. Most recently we have been picking the stretch between California Cross and Harraton Cross.

The Modbury Litter Pickers group would like to thank the Parish Council for its continuing support and, also this year, to thank the Modbury May Fair Committee for their Community Grant. This grant has enabled us to purchase some more robust litter pickers with a longer range to delve into those hedgerows! (See photo)

It would be wonderful if we did not have any litter and cigarette butts, etc to pick up. However, it is satisfying to know that every plastic bottle, can, crisp packet, cigarette butt and vape that we pick up is one less left to contaminate the environment and detract from the beauty of our surroundings. I was heartened to

meet a young man litter picking at the QEII Recreation Ground, as part of his Duke of Edinburgh Award. Well done to him.

If you would like to know more about the Modbury Litter Pickers or to join us, please contact, marina.auburn@gmail.com

Alison Wood

New Additions to the Uxbridge English Dictionary

I am a fan of "I'm Sorry, I Haven't a Clue." One of my favourite bits is additions to the Uxbridge English Dictionary - Google it and you'll get the idea.

Here are some of my suggestions for new entries to the Uxbridge English dictionary:-

truculent - the lorry I borrowed from you.

mix - 1,009

exile - used to be an island.

polygon - I've lost my parrot.

correlate - a delayed episode of Coronation St.

decoration - a speech on board ship.

Finland - where fish live.

firmlly - like a company

Wrexham - doesn't do them any good.

Norwich - poor.

English Channel - budget perfume.

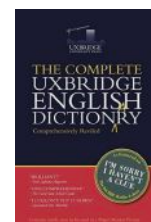
admission - publicity drive.

express - used to be a journalist.

Clapham - applaud now

loiter - a matchstick used in Birmingham

privilege - a shelf in the loo



John Curry

Modbury Tiddlers Playgroup

Come and say hello!
For families with children 0-4 years

Fridays - 9.15-11.15 at Modbury Memorial Hall
Last Friday of the month - out and about day
Term time only

Sensory play, crafts and a dedicated baby area
Dress up, ride ons, toys and more!
Refreshments provided for adults and a healthy snack provided for children

Find us on facebook and instagram for up to date info each week
f Modbury Tiddlers @modbury_tiddlers
mail@modburytiddlers.org.uk

MODBURY CHRISTMAS CRAFT FAIRS 2024

2 FAIRS- DIFFERENT CRAFTERS

SATURDAY 30TH NOVEMBER AND SUNDAY 1ST DECEMBER

MODBURY MEMORIAL HALL

12 NOON-4PM

REFRESHMENTS AVAILABLE

Modbury Messenger Archive - December 1997

The first issue of the Modbury Messenger was published in 1997, issue four was December 1997, it was 8 pages and entirely black-and-white, with no photographs. It had a content list on the front page and diary on the last page. There was an advert for the switch on of Christmas Lights on 5th December when Father Christmas would be in his grotto, a brass band would play, church bells would ring, carol singers would sing and the Modbury Chamber of Trade would be doing its festive best to ensure that Modbury was in full trim for Christmas.

Carol Sims wrote a long article about Christmas then and Christmas past, excerpts from the article are below.

Christmas Past in Modbury

Eileen Lowry, who now lives in Champernowne, was born in Galpin Street. When she was a child in the 1920s and 1930s, Christmas was put firmly in its place at the end of December. Eileen recalls how shopping for food and gifts was usually left until Christmas Eve, when all the Modbury shops were brightly lit, carols were sung in the streets and the town would be animated by people busily and cheerfully preparing for the welcome winter break from their work. The gypsies, who then lived at the top of Galpin Street, would also come down the hill to add their particular colour to the activities. The town's shops satisfied most needs then, Perkins was a general store and when young Eileen was sent to do shopping for a neighbour, she was able to buy anything from cheese to lamp oil, all under the same roof. And the hairdressers - Budd's, used to sell a few toys.

Hilda Furzland does remember, however, that one year, when she was a child, a Mr Causey went to great pains to create a Christmas "cave" in the post office, where a Mr Moore as Santa held court to the Modbury children. But we had no tree in those days, she says, there was no electricity until I was nine or 10 and my mother worried that candles on the tree might cause a fire, but they always had a tree at the Baptist chapel when they had their party; if you had brown bread and butter there, that was wonderful. We lived in Brownston Street and I remember on Christmas morning taking my pillowcase, I'd hung up for Father Christmas to my Gran's in Poundwell to show her what I'd got. There was always an orange and an apple and a few nuts in the bottom, we only had small toys and perhaps a scarf or gloves or something to wear. I do remember having a real skipping rope with wooden handles which I thought was so nice. One year my sister and I had a doll's pram which we had to share. Hilda also tells how the post was always delivered on Christmas morning!

Like Eileen, Hilda has memories of the town shops. There was a toy shop - a Mr Roper's and a sweet shop where a Miss Love was the assistant. There was an outfitter's and a tailor's and a dressmaker's who would make the party frocks which, when we were older, we would wear to the dance on Boxing Night at the White Hart assembly rooms. This was run by the Modbury Harriers and Mr. Wyatt would stamp the back of your hand to show you'd paid. Hilda recalls that the music at this dance was played by local musicians who also performed at Modbury Rover's dance on New Year's Eve. During the war years, Hilda was a busy young woman. I don't remember much, except that there were no proper Christmas cakes, just sponges which my mother used to make using dried eggs. But we never went short of food of some sort.

As to other items in that issue - Modbury Caring requested volunteers, the pantomime advertised its performances of Jack in the Beanstalk, the Modbury fire service thanked everyone who supported the annual firework display, the Modbury Club listed its fixtures of Euchre and special events, the Modbury Bowls Club said it was unlikely a green could be constructed for 1998, the Lupridge Singers would perform at St George's Church on 13th December.

Not a lot has changed, but so much has, this issue is 24 pages, and in full colour.

Ira Young

Memorial Hall Adventure Trail

We regret that the much-loved adventure trail has recently been condemned on health and safety grounds - several of the timber posts have shown signs of rotting and it has therefore been fenced off.

However, we are pleased to announce that we will be replacing the whole trail in the near future with exciting new pieces of equipment made from re-cycled plastic to offer longer durability, lower maintenance costs and extended guarantees.

A small number of companies offering this type of product have been contacted and asked to design and price a replacement. When we have short-listed the designs received, we look forward to consulting with the young people of Modbury and their families before making a final decision.

So, watch this space and make sure you have your say!

Councillor Phil Smith





An Apothecral Tail

Messis



A footnote to the great mullein consideration (September) is this photograph of another native species. This was taken by John Coyte and shows a fine example of **dark mullein (*Verbascum nigrum*)** growing at Butland farm. Dark mullein has, apparently, been used as a tobacco substitute and the flowers used to dye wool and silk. It is also a natural insecticide.

Harvest Festival has been and gone, as has Apple Day. It is interesting to note some of the other hedgerow plants that have been harvested. Around 80 wild plants were used to treat the nation's health during both World Wars. During WW2, Hedgerow Harvest Leaflet Number 5 was issued. This had recipes for vitamin rich dishes that could be made from wild plants. A Vegetable Drugs Committee was set up which established 70 County Herb Committees and 250 Drying Centres. I wonder how this worked out in Modbury with its rich herbal flora.

As previously noted, during the war oranges were in short supply and vitamin C was obtained in the form of **rose hip syrup**. This can easily be made from rose hips. Children were paid 3d (roughly 35 pence today) per pound of rose hips. Five hundred tons per year were collected, sufficient to make 2.5 million bottles. After the war, Scott & Turner of Newcastle produced rose hip syrup under the name Delrosa. This was supplied with orange juice after the war through baby clinics. I remember lining up with my brother and sister for my daily dose of Delrosa, taken in part to take away the taste of cod liver oil that accompanied it.

Atropine and hyoscyamine were extracted from **deadly nightshade**. Both substances are used in eye conditions. Atropine is an antidote for nerve gas.

In 1941, Oxfordshire Women's Institute gathered enough **foxglove** leaves to enable the preparation of 350,000 doses of the heart drug **digitalis**.

Sphagnum moss was used as a wound dressing on account of its ability to absorb 20 times its own weight of water and blood. Hikers went moss collecting on Dartmoor and other peat lands. This enabled the supply of a million dressings per month to military hospitals around the world.

Nettles were collected for preparing anti-asthma medicines. The green dye was used in making camouflage.

Opium poppies (*Papaver somniferum*) were also collected. Though only containing a fraction of the morphine content of poppies growing in hot climates such as Afghanistan, they still managed to obtain useful amounts of important painkillers.

Autumn crocus (*Crocus autumnale*) was collected to extract colchicine for treating gout.

Lastly, children were asked to collect **conkers**. In 1917, 3,000 tons of conkers were collected and sent to the Synthetic Products Company in King's Lynn where they were used to produce the explosives **nitroglycerin** and **nitrocellulose**.

Fiat cum secundum artem

Edward Holt

GREENLANDS NURSERY
Higher Wizaller, Modbury, PL21 0SE
**Shrubs and Perennials**
Holly Wreaths
Non drop Christmas Trees

Jack's Magic Compost
Deliveries can be arranged
Local family run business excellent value
Tel: 01548 550491 or 07534 611587
Email brendagreenlandsmodbury@yahoo.com
We also have a good selection of marble based garden ornaments

- Bathroom and kitchen fitting
- Floor and wall tiling
- Leaking toilets/radiators/taps etc
- Radiator replacement and additions
- Shower pumps
- Links with local builder/electrician for larger installations if required

Chapman & Sons Plumbing Service
**Small jobs welcome**
Reasonable rates
Free quotes
Telephone 07468 466380 now
for a speedy and efficient service.

Allotment Joys

There's no better feeling than returning home from an hour or so on the allotment with a basket full of vegetables or fruit that you've nurtured through seed sowing, hoeing, watering, fending off marauding pigeons, weeding and harvesting - the fruit of your labours, knowing they are fresh, free from pesticides and packaging. Probably a bit muddy, but oh so rewardingly tasty!

Ok, so they may have a reassuring slug or snail hiding in the leaves, and maybe not as precisely sized and power-washed as those from Tesco, but what a joyful feeling!

Allotments have been around since Anglo-Saxon times as some of you may remember, which is why they are traditionally measured in rods or poles, ten poles – about 250 square metres, enough area to feed a family of four through the year.

Most allotments locally are much smaller than this, but can still provide a lot of produce. and so many other benefits as well:



They provide rich, green, biodiverse spaces for wildlife and pollinators, and space for us to unwind, exercise and keep active. Digging, raking or spreading compost help keeps the body flexible. It's a good workout as long as you don't overdo it. Every allotment should have a seating area where you can rest, plan your next row of beans, take in the fresh air, listen to the birds and contemplate your life. Leave your mobile at home.

Research studies have shown that gardening significantly reduces depression and anxiety and improves social functioning, like occasionally chatting to other allotment holders and prevents cognitive decline, although I can't remember where I read that. Why watch Gardener's World on TV when you can be part of it. Get off that couch!

Physical contact with soil and getting your hands dirty increases serotonin, a natural anti-depressant, in your brain, making you feel happy. It works for me.

Modbury is blessed with two allotment sites, one at Palm Cross and one in Church Lane – go along and take a look - there may be a vacant plot waiting to nourish you both physically and mentally. Don't delay registering your interest and getting ahead of the game; now's the perfect time to prepare a plot ready for sowing and planting in the Spring for a joyful year.

Contact the Parish Office on 01548 830222 or parishclerk@modburyparishcouncil.gov.uk.

Jeff Booth

Launch of Modbury Poppy Appeal

This photo was taken when the Poppy Appeal was launched in the town on Sat 26th October by the Branch Chairman, Dave West MBE. Modbury Town Crier, David Scott, announced the Appeal.

If you would like to donate to the Poppy Appeal then visit the Royal British Legion website:

www.britishlegion.org.uk

Remember that funds are needed all year round, not just for Remembrance in November.



Grit Bins - in preparation for the cold weather!

Modbury has eight full grit bins ready for the cold spell. They are located around the town as shown on the attached plan. This is also available on our website: <https://modburyparishcouncil.gov.uk/wp-content/uploads/2024/10/Grit-bins.pdf>. These bins are here for public use and so please do help your self to the grit when needed for slippery roads and pavements. Additional salt will be distributed in problem areas as and when needed.

Just a reminder that the bins are not litter or dog poo bins. Sadly, our volunteer snow warden has had to clear out such items to make the bins ready for use over the winter!

Sally Smale, Parish Clerk



FUTURECLIENT

CREATIVE DESIGN AGENCY

We provide local businesses and clients with digital, online and promotional products and services.



OUR WORK



- WEBSITES
- ECOMMERCE
- DESIGN
- PRINT
- SIGNWRITING
- CLOTHING

01548 853214

www.futureclient.uk

THE FLOOR SHOW



Your Local South Hams
Carpet & Vinyl Flooring Experts

7 Church Street, Modbury,
Devon. PL21 0QW

01548 830909

thefloorshowmodbury@gmail.com

www.thefloorshowmodbury.co.uk



Modbury History Society

Modbury History Society meets on the second Monday of the month at 7.35pm at the QEII Pavilion, Chatwell Lane, Modbury PL21 0FS, where there is ample parking in the grounds.

Membership is £20 for the series of lectures listed below, or come as a guest for a fee of £5.

Please contact rosiejane.parker@gmail.com if you would like further information.

The next meeting is at 7.35pm on Monday, 9th December when Dr Helen Wilson will talk about "THE REMARKABLE PINWILL SISTERS' - A FAMILY OF LOCAL WOODCARVERS." This is an account of the women whose wood carvings are associated with Ermington Church and many others in Devon.

PROGRAMME OF SPEAKERS 2025

10 TH MARCH 25	JOHN BELL	STAIRWAY TO THE STARS - THE HISTORY OF CINEMA IN DEVON IN THE GOLDEN AGE
14 TH APRIL	HENRY WAINWRIGHT	SHIPWRECKS IN BIGBURY BAY
12 TH MAY	BERNARD MILLS	RAILWAYS IN THE SOUTH HAMS
9 TH JUNE	PAMELA VASS	SUFFRAGETTES IN DEVON

Rosemary Parker



Modbury Branch Royal British Legion

The next Business Meeting of the Modbury and District Branch of the Royal British Legion will be in The Club on Wednesday 4th December starting at 7.30pm, and include Christmas fayre and carols. New members are always most welcome.

David Scott

walk&talk

The December walks are on 3rd, 10th and 17th December.

Please note that the 10th December walk will be at

Buckfast Abbey and followed by the Christmas lunch.

There will be no walk on 24th or 31st December. The venue and travel arrangements for each of the walks will be discussed and decided at the previous week's walk.

Walk Leader contact details:

Sue Rogers	01548 831289
Jean Wright	01548 810029
Catherine Speight	01548 830195

Sue Rogers



ERMINGTON HOUSE

Quality Residential Care



Ermington House

CQC overall rating

Good

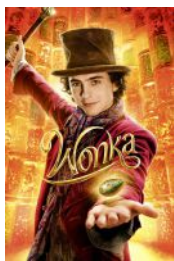
6 January 2021

Quality Care 24 hours a day in an idyllic location

- 24-hour Person-Centered Care
- Highly trained, caring and attentive staff
- Daily stimulating entertainment and activities
- Home cooked, nutritional and appetizing meals
- Safe and secure environment
- Daily visits by District Nurses
- Regular visits by Chiropodist, Hairdresser, Dentists, Opticians and GP's
- Beautiful personalized en-suite bedrooms
- Respite and Long-term Care

Ermington House, Ermington Nr Ivybridge, Devon PL21 0LQ
Email: enquiriesermingtonhouse@outlook.com | Tel: 01548 830076

Holbeton Film Club



December's film is **Wonka** (certificate PG). A colourful musical fantasy and our choice for a pre-Christmas film. With dreams of opening a shop in a city renowned for its chocolate, a young and poor Willy Wonka discovers that the industry is run by a cartel of greedy chocolatiers.

This is showing on **Friday the 13th December 2024** in Holbeton Village Hall. Doors open 7pm. The programme starts at 7:30pm. Tickets on the door still only £4. £2 for under 12s (cash only). Ice creams will be on sale for £1.

Our forward programme is:

Baltimore, 15

Wilding, PG

Hard Miles, 12A

Saturday 11th January

Friday 14th February

Saturday 8th March

Harry Baumer 01752 830274

harryluson@gmail.com



Harry Baumer

KINGSBRIDGE CHORAL WORKSHOP – 2025

PSALM SETTINGS by JOHN RUTTER & BOB CHILCOTT

SATURDAY, FEBRUARY 8th 10.00am. – 5.00pm.

AT KINGSBRIDGE METHODIST CHURCH

Led by Alastair Durden

Accompanist: John Corrie

Costs only £16. Brochure giving full details from alastairdurden@gmail.com

or phone 07724 486584

MODBURY WI



Modbury WI meets at 7.30pm on the third Tuesday of the month at the QEII Pavilion in Chatwell Lane, Modbury PL21 0FS excluding December, January and September when we meet up during the day

for other activities such as coffee, lunch or tea out. Visitors are most welcome to attend a meeting for a fee of £5.

If you would like to find out more about what talks and activities are planned, then please email

modbury@devonwi.org.uk

INTENDED MONTHLY FLAG HOIST AT PALM CROSS GREEN - December

Date	Masthead	Starboard Yard (Plymouth) - West	Port Yard (Modbury) - East	Event
09	Charles I Royal Stand	MODBURY	1642	First Battle of Modbury 1642
13	White Ensign	RPLATE	1932 nd sub	Battle of the River Plate 1939
14	Union Flag	BOSNIA	192 nd sub5Ans	End of the Bosnia War 1995
18	Union Flag	IRAQ	2013 rd subAns	End of the Iraq War 2011
28	Union Flag	AFGH1 st subN	2014Ans	End of the Afghanistan War 2014

MARTIN LEY
PLUMBING & HEATING

- Oil Installations, Servicing & Repairs
- Unvented Cylinders
- Bathrooms & Showers
- General Plumbing

Tel: Modbury 01548 830609
Mobile: 07811 934551

FIONA'S FANCY FEET
DANCE SCHOOL

CLASSES IN MODBURY AND KINGSBRIDGE

Scan the QR code

CONTACT FIONA ON
07800883367
FIONASFANCYFEET@GMAIL.COM
WWW.FIONASFANCYFEET.ORG.UK

CELEBRATING 10 YEARS

ARE YOU PAYING TOO MUCH TAX ?
ARE YOUR ACCOUNTS AND TAX AFFAIRS UP TO DATE ?
ARE YOUR ACCOUNTING SERVICES COMPETITIVE ?

FOR A SERVICE SECOND TO NONE CONTACT

MARTIN E RANWELL, FCA
ELLIOTT & PARTNERS
ACCOUNTANTS AND TAX CONSULTANTS

KINGSWAY, 10 THE PRIORY,
MODBURY PL21 0TL
AND AT 6 MODBURY COURT, 32 CHURCH STREET
T. 01548 830432 M. 07763 526814
martinranwell@googlemail.com

EXTENSIVE EXPERIENCE IN BOTH COMMERCE
AND THE PROFESSION
ALSO PROPERTY MANAGEMENT SERVICES

Modbury Birds 'Citizen Science'

These past few years, we have identified just over 50 species of birds on the Palm Cross Estate, so the question is – in one year how many different species are there in the Parish of Modbury?

For that we need your help, so from 1st of January, please can everyone keep a look out and let us know, provided you are confident of what birds you have seen or heard.

Use one of the following headings:

Garden – for what you've seen or heard in your or other gardens.

Field - for seen or heard on your stroll around Modbury – town & country.

Overhead - for those that just never seem to land when you're watching.

There's no need to put them in all three.

If you identify just by using the *Merlin** App on your phone, make sure you've got the right setting (Birdpack Britain and Ireland) and if you are not sure just put (M) after, as it's not always 100% accurate (e.g. it thinks there's an oystercatcher by the Palm Cross ponds!)




NOAH'S ARK
For 0-4 year olds

Wednesday Mornings
Term Time 9.30-11.00 am

The QE11 Recreation Ground
Chatwell Lane, PL21 0FS

Hot drinks • Home baked cakes • Baby weighing scales
Songs • Musical instruments • Bible story • Craft
Baking activity • Parachute games

Contact: louise_rowland@hotmail.com | 01548 830260 

Once a species has been added, there is no need to enter again. By the way, to save you looking, there is no such species as "little brown bird"!

Please email your findings to modburybirds@btinternet.com

** Merlin is a good and free Bird App that is freely downloadable from the App Store and identifies birds by sound.*

Roger Price
Modbury Wildlife Action Group



Merlin Bird ID by Cornell Lab

Identify Birds You See & Hear

Cornell University

Designed for iPhone

#33 in Reference

★★★★★ 4.9 • 102.7K Ratings

Free

[View in Mac App Store ↗](#)



Do you or a loved one need a little extra help?

WE ARE HERE TO HELP

Carers Direct SW Ltd is local not-for-profit care team of dedicated, well trained, friendly, local carers.

We can provide from one hour to 24-hour care. We also provide night care.

Tasks undertaken include personal care, meal preparation, prompting medication, appointments and social outings.

Contact us for more information on.

01548 854358 or Email. office@carersdirect-sw.co.uk

You are welcome to pop in and see us at our office.

**Unit 2N South Hams Business Park. Churchstow,
Kingsbridge. TQ7 3QH**





Modbury and South Hams Creative Writing Group

We at the Modbury and South Hams Creative Writing Group meet every month, to read and discuss our work. We are a small group of lively individuals who write for all sorts of different reasons. Each month we set ourselves a challenge or theme to hang our ideas on (although we have been known to completely digress).

Below is a submission which one of our members brought to the meeting recently. It is a poem, possibly inspired by the writer's personal experience of nautical adventures. We are keen to welcome new members, so if you enjoy creative writing, why not join us. We meet usually on the first Saturday of the month at the Queen Elizabeth 11 Pavilion in Modbury at 10.00am.

Call Jody Fendick for more details: 07502 009103. www.facebook.com/modburyc creativewritinggroup

Setting Sail

Engine engages, mumbling motor.
Grunching, groaning, twisting torque.
A rattling anchor arises
Clanking, coarse cold chain

Sloshing slaps hit the hull,
Banging the boat's bottom.

Whining, whingeing winch
Pulling a flying, flapping foresail.
Wind billowing the bag of whiteness.

The main sail rises.

Floating over deep blue rollers,
Few white horses

A beautiful breeze brushes by.

Lesley Wilde

ALAN MAHER

ELECTRICAL CONTRACTORS LTD

- *Electrical Installations*
- *Electric Car Charging installations*
- *Intelligent Lighting*
- *Home Entertainment.*
- *Design, Installation and Testing.*
- *Condition Reports and PAT testing*

Phone 01548 811290 /MOB 07966 168 928

e-mail:-alanmaherelectricaltd@gmail.com



 **Luscombe Maye**
Since 1873

The Luscombe Maye Advantage

To find out how much your home is worth,
please call or email Eleanor, Sara or John in
the Modbury office.

For more information contact
modbury@luscombemaye.com or
call **01548 830831**

luscombemaye.com  [luscombe maye](https://www.facebook.com/luscombe.maye)  [luscombe_maye](https://www.instagram.com/luscombe_maye)



MODBURY MESSENGER

COMMERCIAL ADVERTISING RATES MODBURY MESSENGER DECEMBER 2024

SIZE	1 INSERTION		3 – 10 INSERTIONS (Per insertion)		12 INSERTIONS (Per insertion)		12 INSERTIONS (Year Total)	
	Black	Colour	Black	Colour	Black	Colour	Black	Colour
1/8 page	£15.00	£30.00	£13.00	£26.00	£8.00	£16.00	£96.00	£192.00
1/4 page	£30.00	£60.00	£25.00	£50.00	£15.00	£30.00	£180.00	£360.00
1/2 page	£54.00	£108.00	£43.00	£86.00	£25.00	£50.00	£300.00	£600.00
1 page	£96.00	£192.00	£74.00	£148.00	£40.00	£80.00	£480.00	£960.00

Advertisement Sizes:

One eighth page

One quarter page

One half page

Full page

Portrait or Landscape 1.75" x 2.5" (45mm by 65mm)

Portrait 3.5" x 5" (90mm x 130mm) Landscape 7" x 2.5"

Landscape 7" x 5" (180mm x 130mm) Portrait 10" x 3.5"

Portrait 7" x 10" (180mm x 250mm)

To advertise in the Modbury Messenger, contact the Editor, Lynne Barnes via email on

modburymessengercic@gmail.com

Modbury Messenger January 2025

The copy date for the January 2025 Modbury Messenger is **5th December**. Please email all articles, notices of events and paid advertisements to modburymessengercic@gmail.com.

The Modbury Messenger is published by Modbury Messenger CIC and is printed by ESP Print. The views expressed in the Messenger do not necessarily represent those of Modbury Messenger CIC.

The Editorial Committee reserve the right to précis/abbreviate any copy submitted for inclusion in the Modbury Messenger. Their decision is final. The contents of the Modbury Messenger may not be reproduced in any form without the prior written permission of Modbury Messenger CIC.

Guidance for submitting material is available online at <http://modburymessengercic.co.uk/about.html>

Persons submitting entries with art or photographs not drawn or taken by themselves must confirm they have obtained copyright permission, or agree to pay any copyright fine which is subsequently raised

modburymessengercic@gmail.com

MODBURY MESSENGER CIC

Modbury Messenger CIC is a Community Interest Company and as such is registered by the Registrar of Companies for England & Wales, Northern Ireland or Scotland. A Community Interest Company is a special type of not-for-profit limited company which exists to benefit the community. The purpose of Modbury Messenger CIC is to disseminate information about events, notices and articles of interest to the people of Modbury and it does this by publishing the Modbury Messenger, a printed newsletter, every month with 1000 copies delivered to homes and businesses within the Parish of Modbury. An online copy of the Modbury Messenger is available to neighbouring communities, advertised via social media and on our website modburymessengercic.co.uk.

Advertisers are charged a fee for advertising in the Modbury Messenger and this covers the cost of producing the Modbury Messenger. The Board of Directors, Company Secretary, Editor, Proofreaders and Distributors are all volunteers.

Directors of Modbury Messenger: Diana Lynne Barnes & Bernard Taylor.

Company Secretary: George Rosevear FCIS.

Treasurer: Edward Holt

Editorial Committee: John Bower, Lynne Barnes, Ira Young.

Modbury Messenger CIC has produced the Modbury Messenger as an independent CIC since September 2018. Previously, it was published by Modbury Parish Council



Landscaping and General Building

Including:

**Stone Walling • Retaining Walls • Groundworks
Drainage & Irrigation • Driveways
Patos & Paths • Gates • Fencing & Decking etc**

Family Business Since 1976
Company No.3942610

Competitive Quotes Given, Full Insurance

Gatcombe Mill - Littlehempston - Totnes - TQ9 6LW

Office: Tel- 01803 864 871
Email: enquiries@afbrowns-sons.co.uk
Web: www.afbrown-sons.co.uk

**Est. independent
LOCAL ELECTRICIAN**

**Dependent, honest
and reliable service**



- Complete rewires and new builds
- New 18th edition Consumer Units/Garage Units
- Landlords & Insurance Certificates
- Domestic electrical fault finding
- Specialising in garden, kitchen and floor lighting from planning to certification

All work guaranteed/certificated
Fully insured, qualified &
registered with NICEIC



Call Phil for a free, no obligation quote or callout

Tel: 07769 840012

Email: lightworks.electrics@gmail.com



**For customers who expect more
from their estate agents.**

Our Modbury team has a wealth of South Devon Estate Agency experience, covering the coast and countryside. Whether you're looking to buy or sell, contact our friendly and knowledgeable team today.

**SALES | LETTINGS | AUCTIONS, CGT, IHT &
PROBATE VALUATION**



**01548 831163 | modbury@marchandpetit.co.uk
4 Broad St, Modbury, Ivybridge PL21 0PS
www.marchandpetit.co.uk**

HELEN MOORE PROPERTY

POWERED BY
exp UK

- Professional personalised marketing to suit your property and circumstances
- Over 30 years experience selling homes across the South Hams & Plymouth
- One to one service from start to finish
- Over 80 Five* Reviews
- Local. Independent. Value. Effective.



Call 01752 962162

www.helenmoore.exp.uk.com

YOUR LOCAL
INDEPENDENT
ESTATE AGENT

