



MODBURY MESSENGER



Illustration - Jennifer Johnston

For the People of Modbury & Brownston

Volume 25, Issue 314 - May 2025

TWO MODBURY RESIDENTS ARE HIGHLY COMMENDED BY SOUTH HAMS DISTRICT COUNCIL

On Thursday 20 March David Scott and Pauline Ryder were asked to be at Follaton House, the headquarters of the South Hams District Council, for a special presentation in the afternoon. Both were shown into a large reception room and met various other people from various places around the South Hams. After a very welcome cup of tea and some cake, the South Hams District Councillors came to meet the gathering, led by the Chairman, Cllr Bernard Taylor, who then requested that everybody follow him into another reception room where each would receive a certificate for an award.

David Scott and Pauline Ryder were duly presented with a Highly Commended Award for services to Modbury - David as Town Crier and allotment benefactor and Pauline for all her charity work, including the May Fair and Guide Dogs for the Blind and her work at the Memorial Hall. After the individual presentations everyone went for more photographs on the main steps of Follaton House.



Unfortunately the photographs taken inside were rather dark and so Cllr Bernard Taylor arranged to do a second presentation in Modbury Memorial Hall. David Scott and Pauline Ryder were both very pleased to have their efforts recognised.



Fitness studio & 24/7 Gym

Unit A
Pearse Gardens
Modbury
PL21 0FX

★★★★★

Over 100 5 star reviews

Contact us to book
your 'No Sweat Intro'

www.bomberspt.co.uk

gym@bomberspt.co.uk

MODBURY MAY FAIR 2025

Your Modbury May Fair Programme was included in the centre of the April Modbury Messenger.

A two page summary is included in the middle of this issue.

You can also find the programme online at:

www.modburymessengercic.co.uk

Page 1



GEORGE H.W. ROSEVEAR
& COMPANY

A DIVISION OF HOLBROOK ASSOCIATES

ACCOUNTANCY, TAXATION AND
COMPANY SECRETARIAL SERVICES

01548 831427

3 MODBURY COURT, 32 CHURCH ST.,
MODBURY, DEVON, PL21 0QR
george@holbrookass.com

Tall Orders Landscaping

All aspects of gardening

- *Hedge trimming / Tree work
- *Grass cutting - Lawns to Paddocks
- *Fencing / Turfing / Stump grinding
- *Weed control / Lawn Scarifying

Logs Supplied

- *Locally sourced hardwood
 - *Delivered in dumpy bags / nets
- Tel . 01548 831139 / 07967258318



Modbury taxi



Contact
Tel : 07455393693

Modbury Private Hire Taxi

Pre booking is required for all local and longer distance journeys. This includes daytime, evening and airport transfers. Prices are agreed on booking.

Please don't hesitate to contact us if you have any questions.

07455393693

MICHAEL R HAGGER

Professional Painter & Decorator

City & Guilds Advanced Craft trained

Over 40 years decorating
experience, with the last 26 years
in the wonderful South Hams.

Fully Insured



For a friendly,
no obligation
estimate or
reference

Tel: 07977445521



South Hams
Wills & Probate

Your local cost-effective alternative to solicitors

- Wills -
- Probate -
- Lasting Powers of Attorney -
- Inheritance Tax Planning -
- Trusts -

Call Vanessa (Chartered Accountant)
on 01548 858806
mail@southhamswills.co.uk
www.southhamswills.co.uk



Designed Space
Ltd

Architectural Drawings and Planning Applications

Contact Alayne Harris B.A.
0755 191 0874
info@designedspace.co.uk
Based in Modbury



MARTIN LEY PLUMBING & HEATING

- Oil Installations,
Servicing & Repairs
- Unvented Cylinders
- Bathrooms & Showers
- General Plumbing

Tel: Modbury 01548 830609
Mobile: 07811 934551

FIONA'S FANCY FEET DANCE SCHOOL

CLASSES IN MODBURY AND KINGSBRIDGE

Scan the QR code



CONTACT FIONA ON
07800883367
FIONASFANCYFEET@GMAIL.COM
WWW.FIONASFANCYFEET.ORG.UK



ARE YOU PAYING TOO MUCH TAX ?
ARE YOUR ACCOUNTS AND TAX AFFAIRS UP TO DATE ?
ARE YOUR ACCOUNTING SERVICES COMPETITIVE ?

FOR A SERVICE SECOND TO NONE CONTACT

MARTIN E RANWELL, FCA
ELLIOTT & PARTNERS
ACCOUNTANTS AND TAX CONSULTANTS

KINGSWAY, 10 THE PRIORY,
MODBURY PL21 0TL
AND AT 6 MODBURY COURT, 32 CHURCH STREET
T. 01548 830432 M. 07763 526814

martinranwell@googlemail.com

EXTENSIVE EXPERIENCE IN BOTH COMMERCE
AND THE PROFESSION
ALSO PROPERTY MANAGEMENT SERVICES

MODBURY NATUREFEST 2025 Saturday June 28th 2-5 pm

Modbury Naturefest returns and will be bigger and better than last year, with more refreshments.

The fun begins at 2 pm at MARS (QE) recreation ground. Adults and children are in wonderful wildlife and environment we have on our doorstep. Admission is free.

As you see from our poster, there will be lots of activities for all ages, including drop-in sessions for art, creating bee pom poms, natural dying, and willow.

There will be a storyteller, a nature treasure hunt, the ever-popular bug hunting, bee counting, making bird nest boxes, learning how to encourage wildlife in your garden, orchards in Modbury (with apple juice and cider) and information about our rivers.

In the Pavilion we will be serving cream teas, and there will be other drink and food stands. The Pavilion and part of the festival site outdoors are accessible to all users, and we encourage people of all ages and abilities to join us.

See you there!

Modbury Wildlife Action Group



An Appeal for Plants from Modbury Bloomers

Our small group of volunteers are getting ready to plant up the flower beds and planters around the town.

Despite our best efforts to overwinter plants in a polytunnel, even with fleece duvets and much TLC (thanks Jennie), most did not make it through the frosts. Consequently, we find ourselves both short of plants and short of budget for this summer.

We know there are many keen gardeners in Modbury, so we thought we would make an appeal for any spare plants you might care to donate to brighten up the town. Maybe your seedlings have been more productive than you expected. Perhaps you plan to move some existing plants to make way for new ones, but feel it's a shame to dispose of the old ones. Bloomers can give them a new home.

We have no desire to be picky (beggars can't be choosers), but plants that will fit the bill nicely would meet some of the following criteria:

- ★ Big enough to plant out in mid-May i.e. not seedlings.
- ★ A full-grown height of around 20-30 cms. We will be buying edging plants.
- ★ Bright and colourful blooms, or colourful/variegated foliage.
- ★ Have a long summer flowering season – we only get one shot at this.
- ★ Hardy and relatively drought tolerant (we do water weekly during the summer and more frequently in long dry spells).
- ★ Pollinator friendly if possible.

When and how to donate your plants

We will be setting up a table outside the **Curator Café on Saturday 17th May from 09:30 – 13:00** - thanks to Sarah and Matteo Lamaro. Just drop off your plants and we will ensure they find a good Modbury home. There will also be a Bloomers Donation pot if you would prefer to donate cash. All funds go towards plants and compost.

Modbury Bloomers is a small informal group of volunteers. We operate under the banner of the Modbury Town Improvement Charity (Registered with the Charity Commission for England and Wales, Charity No 1044082) which will look after any cash donations.

Colin Whybrow
Modbury Bloomers



Modbury Branch Royal British Legion

The next Meeting of the Modbury and District Branch of the Royal British Legion will be a Business Meeting in The Club on Wednesday 4th June, starting at 7.30pm.

New members are always most welcome.

David Scott

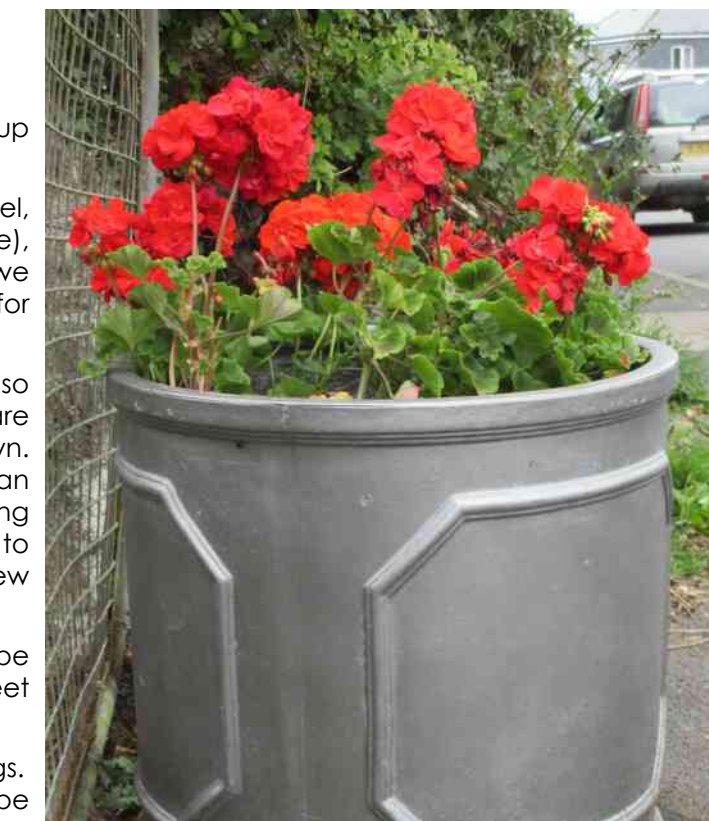


www.let-it-out.co.uk

*The flexible approach
to letting your holiday home*

Gail Critchlow
07889 628514

Liz Baker-James
07388 673228





Tailor-made **travel
arrangements to
Africa and Latin
America.**

35 Church Street, Modbury • 01548 858 272
sales@distinctiveamericas.com
www.distinctiveamericas.com

**DISTINCTIVE
AFRICA**



**DISTINCTIVE
AMERICAS**



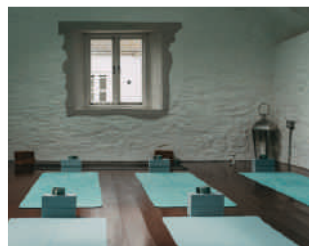
Modbury Therapy Centre *Health and Wellbeing Centre*

Offering Complementary Therapies

Acupuncture, Reflexology, Massage Therapy, Homeopathy, Counselling,
 Psychotherapy, Nutritional Therapy, Yoga, Pilates, Meditation,
 Cognitive Behavioural Therapy, EFT, Life Coaching, Sound Healing

www.modburytherapycentre.co.uk
enquiries@modburytherapycentre.co.uk

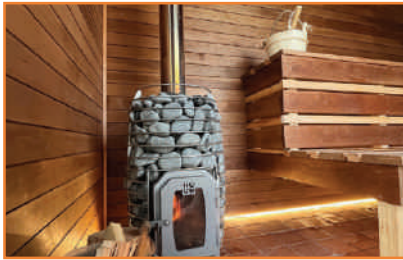
07973 367517



To advertise your business in the Modbury Messenger, please contact us at
modburymessengercic@gmail.com

www.modburymessengercic.co.uk

BIGBURY CAMPING BARN



Wood-fired sauna and hot-tub to soak away the winter blues, available for your sole use.

Contact Cathy 01548 810079
info@bigburyholidays.co.uk
www.bigburyholidays.co.uk

K Woodward Home Improvements

- Bathrooms and Kitchens
- Extensions
- Property refurbishment
- Structural Alterations
- Tiling and Flooring

Multi Skilled Professional Approach to Improving your Home



Tel 07772 921544

keithwoodward1220@gmail.com

MODBURY OSTEOPATHIC CLINIC

Dr. Mike Hopkins

Back, neck,
chronic and
complicated
muscular pain



01548 830040/
07775815906

(by the Palm Cross estate entrance)

Quiz Night

In aid of Modbury's Marvellous Mural

Find out more about plans for the Mural in Modbury Car Park and have a great night competing with your friends and neighbours.

Saturday 7th June

7.30pm in Modbury Memorial Hall

£5 per ticket - teams maximum of 8 people
Available from Modbury Post Office, Bar available

Sarah Wyatt

The Seated Dance and Singing Group in Modbury

Just a reminder that the above group will celebrate its 4th birthday on July 16th! It was set up to celebrate the end of the long enforced period of isolation after lockdown especially for those who were living on their own.

It now has 12 regular attendees and five helpers. Together we share a pleasant two hours once a month singing and dancing (arms only from our chairs) with a break in between for tea, home-made cake, and a chat. You are welcome to join us on the third Wednesday of the month in the MARS Pavilion, Q&A Recreation Ground, Modbury, from 2.30 to 4.30. Cost £3. Transport from Modbury available.



Please contact Jenny on 01548 830937 or 07787786594 or jenny.beavon@outlook.com
Next session is on May 21st.

Jenny Beavon

MODBURY MAY FAIR ROAD CLOSURES 2025

ROAD TRAFFIC REGULATION ACT 1984, SECTION 16A THE COUNTY OF DEVON TEMPORARY PROHIBITION OF THROUGH TRAFFIC

No person shall cause or permit any vehicle to proceed on the sections of Affected Roads except for access to land or premises on or adjacent to those length of roads.

NOTICE is hereby given that Devon County Council has been approached to make the above titled order live as per the dates below. It is planned that this will be invoked as follows:

Saturday 3rd May 07:00h - 14:30h

Poundwell Street Closed 07:00h – 14:30h from Post Office – Bottom of Short stay car park.

Access to Poundwell from 07:00h on Saturday via Church Lane & Bunker Hill only

Saturday 3rd May 15:00h – 17:00h Carnival Parade

A379 Town Centre (Palm Cross Green - Galpin St) 16:00h -16:30h
Brownston Street, 16:00h – 17:00h, Dark Lane, 16:00h – 17:00h,
Barracks Road 15:00h – 16:30h

Monday 5th May 14:00h - 15:00h

Town Centre (Palm Cross Green - Galpin St), Brownston Street, Dark Lane,
Barracks Road closed to all traffic -
Modbury Mile Fun Run Road Races 14:00h -15:00h

CAR PARK CLOSURES

APPLICATION HAS BEEN MADE TO SOUTH HAMS DISTRICT COUNCIL TO CLOSE THE CAR PARKS AS FOLLOWS:

Friday 2nd May - Saturday 3rd May 2025

Poundwell Short Stay Car Park closed for May Fair Market from 18:00h on 2nd May until 15:00h on 3rd May

Monday 5th May 2025

Poundwell Lower Long Stay Car Park closed for May Fair Opening Ceremony closed from 06:00h on 5th May until 1400h on 5th May

Creative writing competition



NEW for 2025!

SPACE

Modbury May Fair

Organised by the Modbury and South Hams Creative Writing Group.

Theme : Space

Categories:

Adults Short story: maximum 2000 words
Poetry: maximum 30 lines
(No Minimum)

Children (16 and under) Short story: maximum 2000 words
Poetry: maximum 30 lines
(No Minimum)

Please state name, contact number, category and age (if 16 or under) at top of piece.
And make sure your entry has a title.
Email entries to ajfield@btconnect.com by Friday 2nd May

Modbury Cricket Club News

Modbury Cricket Club has a new website! To see what the Club can offer you and to keep up to date with fixtures, results and socials please visit

www.modburycc.co.uk

Training continues **every Thursday evening from 1800 – 2000** in the Club's nets at the QE2 Recreation Ground. Why not come along and join in the fun!

Our fixtures for the next month are as follows (home matches are played at Ermington):

Thurs 1 May	Ermington (20/20)	Home	1800-2100
Wed 7 May	Harberton (20/20)	Away	1800-2100
Sun 11 May	South Brent	Away	1300-1700
Sun 18 May	Cornwood	Away	1400-1800
Sun 25 May	Philanthropists	Home	1300-1700
Sun 1 June	Holbeton	Away	1300-1700

Remember, new members are always welcome. Contact me on 07759 282404 for more information.



Phil Smith
Secretary
Modbury Cricket Club





Thinking of selling your home?

We offer a fresh, local and personal approach to selling your home

- Bespoke service tailored to you
- Out of hours viewings
- Combined 21 years of experience

It takes just 60 seconds to **book a free home valuation** on our website:

victoriabolt.exp.uk.com
01752 916091



Modbury Parish Council Meeting

Tuesday 1st April 2025, 7pm

Present: Present were six councillors, Cllr Rufus Gilbert (Devon CC) and one member of the public. Apologies were received from Cllrs Phil Smith, Richard Foss and Dave Trigger, and also Bernard Taylor (South Hams DC),



Devon County Council Report by Rufus Gilbert:

- The proposals for devolution of Devon into unitary authorities have been noted. There will be further consultation and information.
- The meeting at Orcheston, regarding flooding there, was constructive – Rufus Gilbert congratulated Modbury Parish Council, in particular Cllr Ann Turner, on their diligence in this matter.
- Rufus Gilbert is retiring in May, and said that MPC are a “very good” council, and thanked them for their help over the years.
- MPC thanked Rufus Gilbert for all his support and work on Modbury's behalf.

Matters arising from the minutes of the Council meetings on the 4th March 2024:

- Flooding at Orcheston; all relevant parties were present at the meeting last week. It was felt that progress had been made to resolve the issue and a number of actions had been agreed; these will be monitored for their effectiveness.

Devolution: The proposals from both DCC and SHDC have been noted. MPC will monitor the proposals as they develop as to what extra responsibilities may be passed on to Parish Councils are unknown. MPC are trying to arrange a meeting with Julian Brazil, leader of SHDC, to discuss the SHDC's proposals and will invite representatives from neighbouring parishes.

Clerk and Parish Office: Office hours for public access on Tuesday and Thursday have been changed to 10:30am-4:30pm. The office will be closed for one afternoon per month for staff training.

Modbury Sick Poor Fund:

- This is a long-established charity set up to help those in need in the parish. Two of the trustee positions are nominated by MPC; one of the positions is currently vacant; it was agreed the Charity would seek to fill the vacancy on behalf of MPC.
- Consideration is being given to a change of name to 'The Modbury Welfare Fund'.

Community Engagement

- The telephone box will be a 'mini-gallery' but it needs sprucing up first.
- The Working Group Terms of Reference have been drafted.
- We are considering a community larder/fridge and how that might be set up and positioned, as there is an existing demand for such a facility in the town.
- Marigolds' Day will be the weekend of the 26th/27th April.

Other business: A Heritage Working Group has been set up. Various initiatives and actions have been discussed and will be implemented.

Date of next meeting: Tuesday 6th May 2025

Tony Price

A Great Time Out and Opportunity to Support a Valued Local Charity



Our next event in our local Open Gardens programme will be held at Mothecombe House Nr Holbeton Devon, on Sunday 11th May 11.00 - 17.00. The route will be signposted. Not only should the gardens look magnificent with flowers, Camelia, Magnolia and Rhododendron (with summer flora on the way), but we plan to sell scrumptious cakes, refreshments, garden plants and raffle tickets as well.

Our other events this year in the South Hams are:

Rattery Hidden Village Gardens	Sunday 15 th June 11.00 - 16.00
Flete House Nr Modbury Devon	Sunday 27 th July 12.00 - 17.00
Bowingsleigh Nr Kingsbridge Devon	Sunday 7 th Sept 14.00 - 17.00

Please check the link to St Luke's website on [Open Gardens | St Luke's Hospice Plymouth](#) for more information.

St Luke's is the charity providing hospice care in the South Hams. We have community nurses, social workers and volunteers who work and live locally; patients are cared for in their own homes or at our inpatient facilities in Plymouth when necessary. Your support for this much valued local service is especially important at this time of great need and high inflation, and would be greatly appreciated.



Colin Pincombe



THE STANBOROUGH CHORUS

Summer Cream Tea Concert

Sunday 15th June at 3pm

At Malborough Village Hall

**Captain Noah and His Floating Zoo
and other light-hearted nautical items!**

Conductor - Pete Cook

Tickets: £10 including cream Tea

(A Raffle will take place)

Available from Modbury Post Office, Kingsbridge
Information Centre, all choir members



MODBURY TENNIS CLUB

April 2025/March 2026 Season

New Memberships and Renewals are

invited for the season commencing 1st April.

Join your local tennis club and have access to the all-weather courts
52 weeks a year right on your doorstep.

Family Membership	£55.00 pa
Single Membership	£35.00 pa
Junior & Student Membership	£22.00 pa
Child (11 yrs & under)	£ 6.00 pa

- Coaching available for all age groups;
- Friendly Club Sessions Thursday afternoons & Sunday mornings (free to members);
- or just play whenever you wish to.

Full details & Application Form available at
www.clubspark.lta.org.uk/ModburyTennisClub

Or, contact: info@modburytennisclub.uk Or, Chairman 07968 777141

Jane Bullen



Modbury Tiddlers

Playgroup

Come and say hello!

For families with children 0-4 years

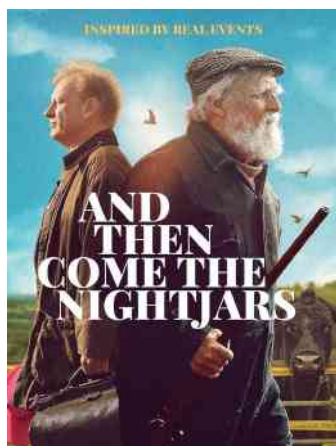
Fridays - 9.15-11.15 at Modbury Memorial Hall
Last Friday of the month - out and about day
Term time only

Sensory play, crafts and a dedicated baby area
Dress up, ride ons, toys and more!
Refreshments provided for adults and a healthy
snack provided for children



Find us on facebook and instagram for up to date info each week
[f Modbury Tiddlers](#) [@modbury_tiddlers](#)
mail@modburytiddlers.org.uk

Holbeton Film Club



May's film is **And Then Come The Nightjars** (certificate 15). Based on a successful play, featuring an unlikely friendship between a cranky Devon farmer and the vet who's assigned to cull his precious herd following the foot-and-mouth outbreak in 2001. Filmed entirely in Devon on location at Meldon Farm, Okehampton, and on the hills nearby as well as the Village Hall in Meldon.

This is showing on **Saturday the 10th May 2025** in Holbeton Village Hall. Doors open 7pm. The programme starts at 7:30pm. Tickets on the door still only £4 (cash only). Ice creams will be on sale for £1.

Our programme for 2025 continues with:

Thelma, 12A	Friday 13 th June
Conclave, 12A	Saturday 12 th July
Oranges & Sunshine, 15	Friday 8 th August
The Outrun, 15	Saturday 13 th September
Small Things Like These, 12A	Friday 10 th October



Do visit our new website with this QR code:

Tel: 01752 830274 email harryluson@gmail.com

Harry Baumer



St George's Church, Modbury



Pray

KIDS' CHURCH - Kids' Church meets in Modbury Primary School. Parents, please drop off your Explorers (age 9+) and Discoverers (age 6-8) at the school from 9:15 am where they will be met by one of the leaders. After Kids' Church, the youngsters will be taken to St. George's to be with their parents at the end of the service. Climbers (age 0-5) will remain in St. George's, meeting their leader to be taken to the Lower Vestry. If you have any questions regarding Kids' Church please contact Sara Chapman on

s.chapman@modburyteam.org

For St George's Parish enquiries contact Mrs Gill West, Churchwarden 07849253605

	Service	Service Leader
May 4th	Holy Communion and Kids' Church 9.30 am	Rev. Oli Long
May 11th	All-Age May Fair Service 9.30 am	Gil Snook
May 18th	Holy Communion and Kids' Church 9.30 am	Rev. Oli Long
May 25th	Sunday Worship 9.30 am Rooted - a service of contemporary worship 6.00 pm	Joyce Howitt TBC

Christian Comment: A HANDY PRAYER

"Pray continually", said St Paul to one of his churches. Are we to take that literally? It raises the question: where does prayer come in our lives? Perhaps we need some encouragement to make our prayer come alive. This "handy" prayer may help.

Hold your hand out and look at your **thumb**. Let it stand for the things that are closest to your heart. Pray for family and friends, especially any who are anxious or depressed. Ask God to hold them close to his heart and meet their needs.

Next to your thumb is your **index** finger which points the way. Pray for leaders and teachers, especially those in your life who seek to guide you, that they may have wisdom and understanding in their work.

Your **middle** finger is the tallest, and speaks of those in authority. Pray (as the Bible urges) for kings, rulers, national and global leaders that they may have integrity and wield power for the good of everyone.

Your **ring** finger is often seen as the weakest. Pray for the weak and vulnerable, for those who are marginalised and for whom life is a struggle, and pray for all who seek to minister to their needs.

Finally, your **little** finger gives space to bring to God your own personal requests, seeking to do God's will in the complexities of everyday life.

Michael Tagent



NOAH'S ARK

For 0-4 year olds

Wednesday Mornings
Term Time 9.30-11.00 am

The QE11 Recreation Ground
Chatwell Lane, PL21 0FS

Hot drinks • Home baked cakes • Baby weighing scales
Songs • Musical instruments • Bible story • Craft
Baking activity • Parachute games

Contact: s.chapman@modburyteam.org

MODBURY – A MONTHLY FILM?

Holbeton has a successful Film Programme and details of the films appear in the Messenger. Now, if we could set up a monthly film evening in Modbury, the film lovers in Modbury and Holbeton would have options of two films a month! The Memorial Hall Committee have confirmed there is equipment in the Hall, but it needs a group of devotees to get together to set up an organising group.

Are you a film buff, if so, would you join a group of like-minded film buffs to set up a film night once a month in Modbury?

If you think it is a good idea, please contact me on
ira.young@btinternet.com.

Ira Young

St Monica's Roman Catholic Church, Modbury

No weekly mass at present

St Austin's Priory Roman Catholic Church, Cadleigh

Mass weekly at 11.30 am
on Sunday

Phone: 01752 895888

E-mail: ivybridge@prcdtr.org.uk

Web: staustinsivybridge.co.uk



AUNE VALLEY IN MODBURY

6 Church Street, Modbury



Free Local Delivery*

*Terms & conditions apply.

10%
Off
with this advert

Bring this with you to receive 10% off in the shop or online. Terms & Conditions Apply

www.aunevalleymeat.co.uk

imakewebsites.



NEED A NEW
WEBSITE?

I CAN MAKE IT!

Contact Vicky

01548 831910

www.imakewebsites.co.uk

MODBURY PARISH COUNCIL

Modbury Parish Council Office, 1 Modbury Court, PL21 0QR

Tel: 07467134225

email parishclerk@modburyparishcouncil.gov.uk

Your Councillors are:

Bill Cole	01548 830913
Chris Field	07836 592854
Richard Foss	01548 721420
Barbara Price (Chair)	07739752095
Tony Price	07801837129
Phil Smith (Vice Chair)	07759282404
Dave Trigger	07808742372
Ann Turner	01548830606
Sarah Wyatt	07794 662903

richardfoss@modburyparishcouncil.gov.uk
barbaraprice@modburyparishcouncil.gov.uk
tonyprice@modburyparishcouncil.gov.uk
philsmith@modburyparishcouncil.gov.uk
davetrigger@modburyparishcouncil.gov.uk
annturner@modburyparishcouncil.gov.uk
sarahwyatt@modburyparishcouncil.gov.uk

How can we help you? Councillors run drop-in surgeries on Sat. 10:00 - 11:00 am in the Parish Office at 1 Modbury Court. The Parish Clerk is in the Parish Council office on Tues & Thurs, 10am - 4:30pm. Call into the office, phone, email or come along to our meetings at 7pm in the Pavilion, QEII Recreation Ground on the first Tuesday of every month and speak in the public forum.

Devon County Councillor (Salcombe Division):

Rufus Gilbert Tel: 01548 856659
rufus.gilbert@devon.gov.uk

South Hams District Councillor Charterlands Ward:

Bernard Taylor Tel: 01548 830844
Cllr.Bernard.Taylor@southhams.gov.uk



MODBURY MAY FAIR 2025

2nd - 10th May

MODBURY BLASTS INTO SPACE!



Modbury's Royal Charter to hold an annual nine-day Fair was granted in 1329 by Edward III. Our own Town Crier, David Scott, will officiate and herald events throughout the Fair.

Friday 2nd May

CEILIDH: 7.00-10.00pm at the Memorial Hall

Tickets £12pp from **Ringrose** in Broad Street

Saturday 3rd May **May Fair Market: 9.00am-1.00pm Poundwell Street**

Stalls galore - and bacon rolls!

To book a stall email ira.young@btinternet.com

Modbury Mile Fun Run registration: 10.45am-12.00pm

The Run is at 2.15 on Monday - entry fee £2pp for all.

Art @ The Hart: 9.00am-1.00pm

Local artwork on display and for sale upstairs at the White Hart.

Shop Window Competition Judging: 10.00am

Carnival Procession: 4.00pm-5.00pm

From the Memorial Hall, down Church Street, returning via Brownston Street and Dark Lane.

Entry forms from Marchand Petit to be returned, to them, no later than the 30th April.

Display of Vintage cars 2.00pm-3.30pm by Long Park, then joining the parade.

The Carnival is sponsored by **Marchand Petit Estate Agents**

Sunday 4th May

May Fair Treasure Hunt: from 1.30pm

One for adults and another for children in a gentle, enjoyable stroll around town.

Collect forms from 1.30pm in Poundwell St. courtyard: £1 for adults and 50p for children.

Afternoon Teas by St George's: from 3.00pm in St George's Church

Indulge with a traditional Devon tea - squash and gluten-free cake available.

Monday 5th May

**Crowning Ceremony with entertainment for all
Lower Poundwell Car Park**

10.00am-12.00pm Fairground games, live music, Circle Dancing, and Creperie

10.30am *Crowning of the May Fair Royalty*, Reading of the Charter by the Town Crier and Hanging of the May Fair Glove. Presentation of May Fair Community Grants.

10.30am-12.00pm Mile Run registration, £2pp, and buy ducks for the Duck Race.

Duck Race: 12.30pm in the Meadow

Prizes! Buy your duck for £1 from local shops or on the day.

The Modbury Mile Fun Run: 2.15pm

Start at Galpin Street: adults and teenagers first race, children second race.

12 age/gender categories from age 5-8y to over 50y: Trophies + medals for all.

The Modbury Mile is sponsored by **Luscombe Maye Estate Agents**

Quiz at the Exeter Inn: 8.00pm

£1pp entry, or as part of the £10 meal deal (food served beforehand from 7.00pm).

Max team size is 6, no minimum: contact the Exeter Inn on 01548 831225 to book.

Cash prize for the winner + many marvellous raffle prizes

Tuesday 6th May **Beetle Drive: 5.45-7.45pm in the Memorial Hall**

1st Modbury Cub Scouts invite you to join in a fun-filled evening.
Prompt start at 6.00pm. £2 entry fee. KS1 children should be accompanied.

Wednesday 7th May **Dog Show: 6.30pm in the Memorial Hall**

South Moor Vets judge the Best: Puppy (under 18 months); Golden Oldie (over 7 years);
Rescue; Crossbreed; Pedigree; Fancy Dress; Waggiest Tail; Child's Best Friend.

Entry is £1 per Dog per class - all class winners will be entered for Best in Show

Best Pet Portrait Art Competition - entries are FREE

Contact South Moor Vets for more info and to register your dog.

To be sure of entry you must *pre-register* - 01548 830210 or modbury@southmoorvets.co.uk

Acoustic Night of Music: 8.30pm at the White Hart

Bring along your guitar or other acoustic instrument or just your voice and
join in with the tunes and singing. Or come along to listen.

Thursday 8th May **Victory in Europe Day - 80th Anniversary**

09.30am: Special flag hoist at Palm Cross Green - 10.00am: Service at the War Memorial

Modbury Gospel Singers: 7.30pm at the Memorial Hall

A fun night of music for all ages - doors open at 7pm.

Cash bar and donations to Modbury May Fair,

Friday 9th May **Exeter Inn Senior Residents Lunch: 12 noon**

£9.95 for two courses; book your place by calling 01548 831225

Bingo: 7.15pm in the Memorial Hall

Organised by Modbury Brownies. Doors open 6.45pm.

Bring your own bingo dabbers - Prizes to be won - Refreshments available.

Saturday 10th May **Dinner: 6.30pm Cleo's Bistro at the Modbury Inn**

2 courses for £25 - phone Craig or Leah to book on 01548 831230

Sunday 11th May **May Fair Service at St George's: 9.30am**

The May Fair King and Queen will be joining us and we invite everyone in the community to
come along and give thanks for the Modbury Fair, and the week of fun we will all have had.

Everyone is welcome at this all-age service; please stay to enjoy refreshments afterwards.

Modbury History Walk: 1.30pm

Join Tony Price (and Alfie) for a one-hour (or so) stroll around the centre of town.

1,000 years (and more!) of history: email tp@lordpricexp.uk to book a place.

May Fair Writing Competition

Organised by the *Modbury and South Hams Creative Writing Group*.

Write a short story or poem on the May Fair theme of Space (however you define it!)

Two categories: adults 17yr +; children 16yr & under. Email entries to ajfield@btconnect.com

**The Modbury May Fair has its own Facebook page: search on FB for
Modbury May Fair and join the group for details and updates of events**

Modbury Parish Council – Meet Some More Councillors

In late 2024, I had the opportunity to find out what makes some of our Parish Councillors tick, and I felt it would do no harm to hear what some of the remaining six have been up to, and have to say about this important elected group of ours. Modbury Parish Council is still short of Parish Councillors, and especially of those who represent young families' needs, so they are asking again for a volunteer or two from the new Palm Cross estate to join the Council.

Ann Turner

Ann, as anyone who knows her realises, is a dedicated member of the Parish Council serving on the Planning Committee, the Sustainability Group, and the Community Working Group. After raising her two children in Modbury, Ann has a deep connection to the community and is passionate about enhancing its well-being and sustainability. She is a keen advocate for environmental conservation, and has a strong interest in wildlife and gardening, often championing initiatives that promote biodiversity and green spaces. Ann's other interests include cooking, films, and walking her dog, especially at Wonwell, and reading practically anything including detective novels of which she has an extensive collection. Ann is also an active member and secretary of Modbury Wildlife Action Group.



Dave Trigger MBE

Dave was born and bred in Plymouth, in quite a rough area, and soon recognised the need for community cohesion, support for youth and people with disabilities. He became a youth worker there at 18 and became involved in a charity, working with able-bodied and also people with disabilities to teach them to swim, and volunteered with Dame Hannah Rogers School in Ivybridge. Throughout this time, he was working for the MOD at Plymouth Naval Base and the stores depot at Wrangaton. Dave joined the Modbury Young Farmers for the social life, and this opened his eyes to rural communities. He met and married Janice, whose interests were in wildlife and animal welfare. He became a Parish Councillor for Ugborough and a District Councillor for Ivybridge. When they moved to California Cross, Dave began tinkering with farm machinery, taking apart tractors and putting them back together in good working order. They both have quite an entrepreneurial life, turning their hands to all sorts, and even have a roadside stall by the petrol station selling veg and flowers.



He is a founder member of the South Hams Communities in Action Group, and you could even meet him working as an Auxiliary Coastguard for Bigbury Bay or manning the lifeboat in Plymouth. He can also skateboard - who would have known that! Dave was a Modbury Parish Councillor back along (as he says!), and then re-joined in 2023. He is still involved in many charities and is a trustee for Modbury Caring and South Hams Communities in Action. He sits on the Modbury Association of Recreation and Sports committee as the Parish Council representative, and is Chairman of the Small Farms Association. Dave says he has been privileged in life to meet some amazing people and to have had the opportunity to attend the European Parliament and the UK Parliament to speak on Rural Affairs, and has spoken at the House of Lords Select Committee.

Tony Price

Tony moved to Modbury in 2020, but had been coming to the area all his life on holiday and to visit his relatives who lived in Torquay. Now living in the best town in the South Hams has been like coming home, he says, a community big enough to sustain a decent level of services, yet small enough to really feel like a community, and one with a fascinating and long history. Here he began to get involved by helping to start the touch rugby club, by taking over organising the Modbury Mile, playing for the cricket club, being part of the Christmas lights team, joining the town emergency committee and then the Parish Council (where his wife Barbara is in the Chair) in 2023. He certainly believes in volunteering to help the community where he lives, and before moving to Modbury, his main non-work interests were in sport and history. He played rugby for over 50 years, and as he grew captained all six sides of his local rugby club, and was then on the board of Surrey Rugby, then the national governing body, the RFU Council. Tony still referees rugby in Devon, and is a keen involved member of Bigbury Golf Club. His work life has been varied; after working in the City of London for a few years, he ran a picture library and framing business, then started his own historic picture library, developed an E-commerce business, developed and managed websites for others, and started an historic London walking tours company. Here he now sings in the gospel choir, studies local history, and rambles a lot around the South Hams countryside with Alfie, his dog, and plays a lot of golf.



John Bower



Visit us at our dedicated Wellness Sanctuary

**Blissful Yoga.
Workshops & Events.
Coffee & Shopping.**

WellnessWarriorsYogaStudio.co.uk

Modbury High Street, 2C Broad Street, Modbury PL21 0PS

Book a slot!



MEN'S BREAKFAST

SATURDAY 17TH MAY | 9AM
FULL ENGLISH WITH TOAST, TEA/COFFEE

£12.50

*in the
White Hart
Assembly
Room*

*"Pennywell Farm:
starting from scratch"*

GUEST
SPEAKER

Chris Murray

book a place with simon franklin 01548 830071 email: safranklin@btinternet.com

Organised by St George's Church



ERMINGTON HOUSE
Quality Residential Care



Ermington House

CQC overall rating

Check the full report at www.cqc.org.uk

Good ●

6 January 2021

Quality Care 24 hours a day in an idyllic location

- 24-hour Person-Centered Care
- Highly trained, caring and attentive staff
- Daily stimulating entertainment and activities
- Home cooked, nutritional and appetizing meals
- Safe and secure environment
- Daily visits by District Nurses
- Regular visits by Chiropodist, Hairdresser, Dentists, Opticians and GP's
- Beautiful personalized en-suite bedrooms
- Respite and Long-term Care

Ermington House, Ermington Nr Ivybridge, Devon PL21 0LQ
Email: enquiriesermingtonhouse@outlook.com | Tel: 01548 830076

Modbury Artist, Jennifer Johnson - Atmosphere, Colour and Light

Retrospective Exhibition, Salcombe Art Club, 24th May – 7th June

Raising funds for St. Luke's Hospice

The Devon artist Jennifer Johnson will be the subject of a retrospective exhibition of her celebrated artwork at Salcombe Art Club next month. Jennifer sadly died last year, following a long battle with cancer. She is greatly missed by her family, friends, students and many acquaintances in the art world.

She would often describe herself as a "jobbing artist", but this did little justice to her extraordinary career. She studied graphic design and illustration at art school in Cumbria and Buckinghamshire, before working for many leading publishing houses, including the BBC, Weidenfeld & Nicholson and Collins & Phaidon. After turning freelance, she continued to illustrate books, take portrait commissions, and work with architectural studies. In the 1970s, she moved to the South Hams to continue her work in the "peace and beauty of the south Devon countryside".

It was this rich and varied landscape that was to inspire countless drawings and paintings, as she documented every corner of the area in her much-admired sketchbooks. She spent decades working as an artist and illustrator in Devon, as well as tutoring in watercolour, landscape painting, drawing, portraiture, life drawing and flower painting.



Jennifer was 'Artist in Residence' at the Ways With Words literary festival at Dartington Hall for ten years - sketching and painting great writers and speakers, including Michael Palin, Sandi Toksvig, Joan Bakewell, David Dimbleby, and many others. In 2023, she was "hugely privileged and surprised" to be made President of Salcombe Art Club, following decades of tutoring and exhibiting at the club.

One of her great passions was working and tutoring *en plein air* - drawing and painting outdoors, immersed in the natural world. She loved to take her students to picturesque places to capture the ephemeral forces of natural light, colour and movement. Her many sketchbooks are testament to this, and her extensive travels across the world.

She ran and tutored painting holidays for many years in England, France, Italy, Spain and Ireland, including fourteen summers at Chateau L'Age Baston, a place she described as "just bliss." She adored the beauty of the southern French countryside with "inspiration around every corner". She regularly demonstrated at local art societies across Devon, and participated in many Open Studio events over the years.

Jennifer inspired great devotion from her students, inspiring countless others to draw and paint. Her work gained a great reputation for capturing the essence and likeness of subjects, from domestic animals to very small children. She said, "she loved the challenge of capturing character and personality," and was "fascinated by expression and mood".

Her draughtsmanship and sense of form shone through all of her work. She described her work as inspired by "shape, movement, colour and atmosphere, with a strong emphasis on drawing". She loved watercolour for "its translucency and immediacy" – but worked in all mediums, including oil, pen & ink, charcoal, carbon, pencil and pastel. She also made collages, etchings, digital art and pottery.



Continued overleaf

Modbury Artist, Jennifer Johnson - Retrospective Exhibition (cont from p.15)



Her son, Christopher, is helping to organise the exhibition. He said, "As I sit here in my mother's studio, I'm in awe of so many reminders of a life devoted to art. I find myself surrounded by a multitude of drawings and paintings, reference books, brushes, sketch-books, pencils, paints, drawers full to the brim with work. I reflect on her passion, and remember her boundless enthusiasm for the natural world. She saw drawing and painting as a process of the world revealing itself to the artist, a communion with nature. She would often refer to her work as akin to meditation."

She continued drawing and painting until the final days of her life. Next to her desk, she had a quote from the artist Dame Laura Knight printed out. The words sum up her devotion to her life's work, "Above all I wish that my eyes may be opened that I may learn to see."

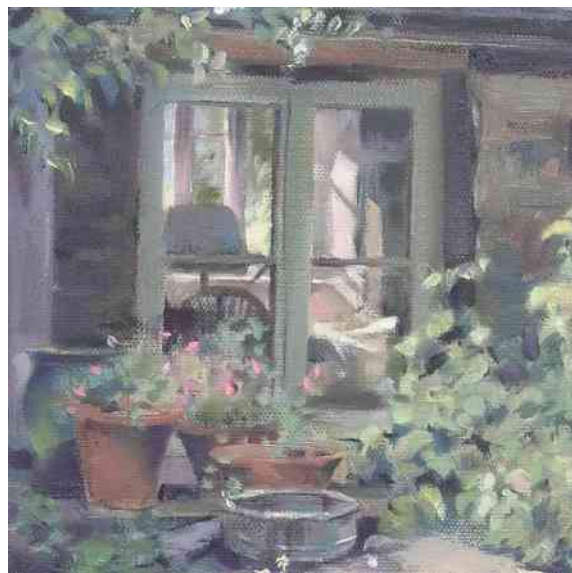
An exhibition of Jennifer Johnson's work will be shown at The Loft Studio, Salcombe Art Club, from Saturday, 24th May until Saturday, 7th June,

raising funds for St. Luke's Hospice – who cared for Jennifer during the last days of her life.

A large archive of more than 800 works has been catalogued and published online. The archive can be found at: www.flickr.com/people/jenniferjohnsonartwork

For further information, please contact Christopher Derrick: cjfderrick@gmail.com, 07811 744 517

Christopher Derrick



 **Luscombe Maye**
Since 1873

The Luscombe Maye Advantage

To find out how much your home is worth, please call or email Eleanor, Sara or John in the Modbury office.

For more information contact
modbury@luscombemaye.com or
call 01548 830831

luscombemaye.com  [luscombe.maye](https://www.facebook.com/luscombe.maye)  [luscombe_maye](https://www.instagram.com/luscombe_maye)



Including:

**Stone Walling • Retaining Walls • Groundworks
Drainage & Irrigation • Driveways
Patos & Paths • Gates • Fencing & Decking etc**

Family Business Since 1976
Company No.3942610

Competitive Quotes Given, Full Insurance

Gatcombe Mill - Littlehempston - Totnes - TQ9 6LW

Office: Tel- 01803 864 871
Email: enquiries@afbrown-sons.co.uk
Web: www.afbrown-sons.co.uk

walk&talk Walks are on the 6th, 13th, 20th & 27th.

The venues and travel arrangements for these walks will be discussed and decided at the previous week's local walk.

Walk Leader contact details:

Sue Rogers 01548 831289

Jean Wright 01548 810029

Sue Rogers

Ivybridge u3a March General Meeting Monday 19th May, 2pm, Watermark Centre

Our guest speaker will be Stephen Powles who will talk on "Wildlife Conservation and Photography".



Stephen is a renowned wildlife expert and photographer. He studied veterinary medicine at the Royal Veterinary College before joining a practice in rural mid Devon. After retiring in 2019, Stephen has been able to concentrate on his passions for wildlife photography and conservation, including elusive offers.

This event is open to members and to those no longer in full-time employment who wish to find out more of what u3a has to offer.

Roy Little

Carers Direct (SW) Ltd

Bringing Care To Your Home



Do you or a loved one need a little extra help?

WE ARE HERE TO HELP

Carers Direct SW Ltd is local not-for-profit care team of dedicated, well trained, friendly, local carers.

We can provide from one hour to 24-hour care.

Tasks undertaken include personal care, meal preparation, prompting medication, appointments and social outings.

Contact us for more information on:

01548 854358 or Email. office@carersdirect-sw.co.uk

You are welcome to pop in and see us at our office:

Unit 2N South Hams Business Park, Churchstow, Kingsbridge, Devon TQ7 3QH

CARERS DIRECT (SW) Ltd

**Est. Independent
LOCAL ELECTRICIAN**

**Dependent, honest
and reliable service**



LightWorks
Domestic Electrician

- Complete rewires and new builds
- New 18th edition Consumer Units/Garage Units
- Landlords & Insurance Certificates
- Domestic electrical fault finding
- Specialising in garden, kitchen and floor lighting from planning to certification

All work guaranteed/certificated
Fully insured, qualified &
registered with NICEIC



Call Phil for a free, no obligation quote or callout

Tel: 07769 840012

Email: lightworks.electrics@gmail.com

YOUR MODBURY MESSENGER

It arrives on your door mat every month; last month we had a few queries, and so I thought it was time we printed an explanation of how it reaches you.

Firstly, funding - The editor, treasurer, proof readers and distributors are all volunteers, but the printer has to be paid. The regular advertisements contribute much of the funds for the printing costs, with an occasional contribution for large items which are paid for, e.g., Players adverts and the May Fair Programme. Grants are given for specific items, eg, last year Modbury Parish Council and the May Fair Committee contributed towards a new computer for Modbury Messenger volunteers to use. With the increase in Internet publicity, the need for businesses to advertise locally is reducing. (There was a suggestion recently that there was a collection box in the PO for donations.) Lynne Barnes (for years) and now Edward Holt keep a check on advert payments and send out invoices for the adverts.

Secondly, preparation Contributors send entries to the Messenger email by the 10th of the month before publication. Then Lynne Barnes goes to her computer, and clears the previous issue of old entries, and spends around 30 hours trying to arrange the new items amongst regular adverts and occasional adverts. This is a considerable commitment in time, and a task she has done for 15 years. Lynne, at this stage, makes some editorial amendments. By usually the 15th of the month, the issue goes to the proof-readers. However, it is not unknown for Lynne to receive late entries which are of importance for the town and she is back switching items around to make them fit (last month another two hours).

Thirdly, Proof-Reading An email copy of the issue goes to three proof-readers and at least three others with considerable interests in the town, e.g. parish council. All readers have different skills and knowledge, which contribute to a publication with few factual errors. The proof-readers have about 48 hours to read it and type up comments.

Fourthly, copy finalisation Back to Lynne who spends another couple of hours correcting the text (especially my requests for punctuation!). Then it is emailed to the Printer.

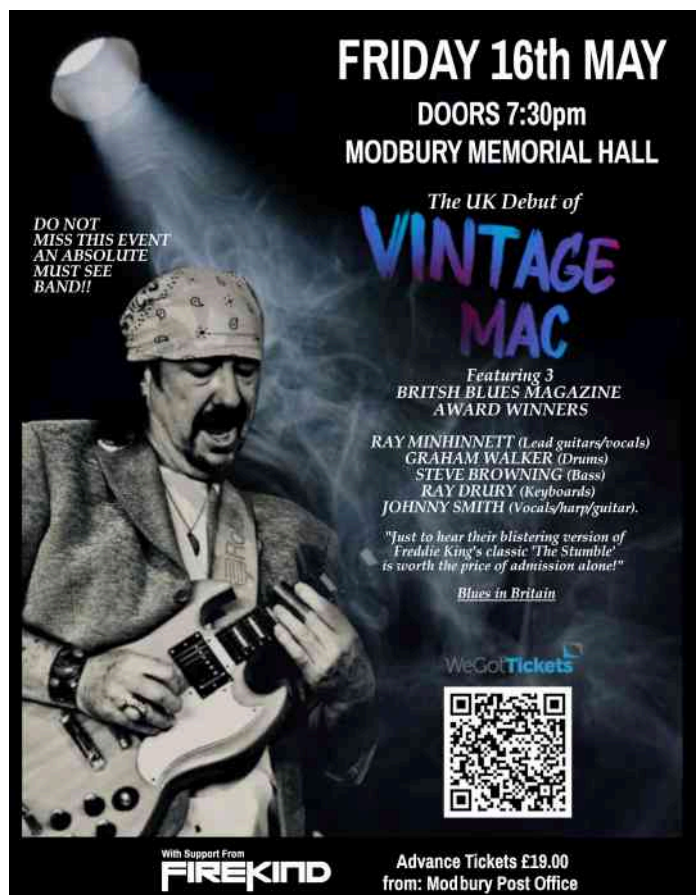
Fifthly, Distribution Five or seven days later, the printer delivers 1000 copies to Modbury. They are divided into 20 rounds, which takes about an hour, then the individual rounds are delivered around the town; distribution takes about three hours as they are taken as far afield as Eastleigh, Fancy Cross and Brownston. The distributors get between 7 and 100 copies to deliver to local houses and businesses. Most rounds (even the seven farm deliveries) take between 30 minutes and 1 hour. A few copies are put in the PO, the Deli and the cafes, for out-of-towners to collect.

SO, WHEN YOU SEE AN ISSUE ON YOUR DOORMAT, PLEASE SAY A THANK YOU TO LYNNE AND THE 30 OR SO OTHERS WHO ENABLE THIS PUBLICATION TO REACH YOU AND EVERYONE IN MODBURY.

Ira Young

For those interested in how the Messenger is produced - it is typeset on an Apple MacBook Air using the Pages software. I may be anywhere in the world when I am producing it and this May edition was produced in our camper van at Land's End but previous Messengers have come from Australia, Norway, Belgium, France and Denmark. That's the wonder of the internet. The April edition came from the New Forest. Who knows where the next one will come from?

Lynne Barnes





Modbury Primary School has had a busy term with a science week, spring church service and the newly introduced class assemblies. These give each class an opportunity to prepare a presentation related to their studies and then perform to their parents at the end of the school day. A highlight of this term was the Year 6 Residential Trip to Grenville House Brixham.

Earlier in the school year than usual, Y6 children set off for their 3 day residential trip full of excitement and a few nerves. The following account is a compilation of the recounts they wrote on their return to school.

"The past three days have been the best three days in years. I had so much fun spending time with my friends, teachers and instructors from Grenville House. We all thought it was AWESOME! We were divided into activity groups and did orienteering, high ropes, raft building and abseiling. It pushed me to do things I would never have done. Abseiling, as you can imagine, was the scariest one. We had to persevere to conquer our fears of heights and get down the 25 metre cliff in the quarry. When we got there I was so nervous, but I pushed myself to do it and loved it. My friends told me not to look down. You had to lean back really far and trust two ropes!



We built our rafts on dry land using rope, wooden planks and barrels and then put on wet suits (this was horrible) to test them in the water. We had races, but some people weren't so good at paddling. I did a big splash jump and a ninja jump - it was the best! The water was cold - and when I say cold, I mean VERY cold! I said my feet were warm but I lied - they felt as if they would fall off.

My first activity was the high ropes. We were harnessed up to create a wall built of crates and then try to make it as high as possible in eight minutes before an instructor pushed us off. Then we did a climbing challenge and when you got to the top you jumped off as if you were flying!

We had a mixture of food while we were away and my favourite was the curry. We went for a walk and bought ice creams one evening. We

were really lucky to see a mother dolphin with its baby close to us in the harbour."



INTENDED MONTHLY FLAG HOIST AT PALM CROSS GREEN - May

Date	Masthead	Starboard Yard (Plymouth) - West	Port Yard (Modbury) - East	Event
02-11	Modbury Flag	Gloved Hand Fair	Rooster Flag	Modbury May Fair Week
06	Union Flag-Royal Cipher	CROWN	201 st sub3	Coronation Day
08	Union Flag	VEDAY	1945	Victory in Europe Day 1945
09	Guernsey/Jersey	LIBERT	1945	C.I. Liberation Day 1945
10	London City Flag	BLITZ	1941 st subAns	End of London Blitz 1941
15	RBL Flag	FOUND	Ans1922 nd sub	Founding of the British Legion 1921
16	RAF Ensign	DAMBST	1943	RAF Dam Busters Raid 1943
24	White Ensign	HOOD	1941 st sub	Sinking of HMS HOOD 1941
26	Union Flag	DUNKIR	Ans1940	Start of evacuation of Dunkirk 1940
27	White Ensign	BISMAK	1941 st sub	Sinking of the Bismark 1941
31	White Ensign	JUTLAD	191 st sub6	Battle of Jutland 1916



Modbury and South Hams Creative Writing Group

This month, the Modbury and South Hams Creative writing group have been running a short story and poetry competition as one of the May Fair events. There might just be time to send us an entry (by 2nd May please to ajfield@btconnect.com). The theme, of course, is 'Space'.

Below is a poem which one of our members brought to the meeting. It is called 'Collage' because it simply consists of bits and pieces from songs and poems on the subject of stars. We're including it here this month to coincide with the May Fair theme of 'Space'.

We are keen to welcome new members, so if you enjoy creative writing, why not join us. We meet usually on the first Saturday of the month at the Queen Elizabeth 11 Pavilion in Modbury at 10.00am.

www.facebook.com/modburycreativewritinggroup

Collage

Stars, hide your fires
For I've lost my heart
To a star-ship trooper
Keeping watch in this
Starry, starry night.
And I bless
That watch divine.

And he says:
You and me
We can ride on a star
And we can
Twinkle ...twinkle
In the cloudless climbs
In the starry skies.

He:
Knows his place in the sky
Up above the world
He:
Won't ask for the moon
He has the stars
And a tall ship
To steer me by.

And I say:
Then I defy you stars
(As lovers often do)
Don't you star-cross me
In your multitudes.
You may be coming
Out tonight,

Like diamonds,
But hand in hand
We'll conquer space.
And I bless his watch
Divine.

Thanks to:

Lord Byron
William Shakespeare
Take That
Bette Davis
John Masefield
Anon
Sarah Brightman
Don Maclean
Emily Bronte
Alain Boublil

Mandy Field

Become a Wren Project volunteer

Be there for someone who needs support

Our incredible team of volunteers provide life-changing support to people in distress as a result of their autoimmune disease.



Through fortnightly video or telephone calls, they deliver listening support that allows individuals the opportunity to talk honestly about their experience of autoimmune disease.

We don't offer disease-specific advice; instead we create spaces for people to talk openly about how their autoimmune disease makes them feel.

Volunteers don't need to have a personal experience of autoimmune disease, or any particular qualifications to join us. They are simply warm, empathetic people wanting to support another during a difficult time.

We support our volunteer base through ongoing reflective practice sessions where they can share their experience of volunteering. We also offer volunteers the opportunity to deepen their listening skills through ongoing training.



To apply as a volunteer,
scan the QR code

or head to our website directly
www.wrenproject.org/apply-to-volunteer



Sarah Wyatt
Independent Civil Celebrant

Weddings, Namings, Vow Renewals,
Funerals – Celebration of Life

MAKING MEMORIES WITH BEAUTIFUL CEREMONIES

Tel: 07794662903 Email: circlecelebrantsarah@gmail.com

www.circlecelebrancy.co.uk



Coastal
Garden Services

Tree Surgery & Landscape Management

Contact: Andy Walker on 07793 056898

info@coastalgardenservices.co.uk

Working in the South Hams for 12+ years

Fully insured - NPTC & RHS qualified



Modbury History Society

The next meeting of Modbury History Society will take place at 7:35pm on Monday, 12th May when Bernard Mills will talk about 'Railways in the South Hams.'

The Society meets at the QEI Pavilion, Chatwell Lane, Modbury PL21 0FS where there is ample parking in the grounds. Guests are welcome for a fee of £5.

The March meeting was postponed at the very last moment and the talk will now take place at 7.35pm on Monday 14th July when John

Bell's subject is entitled ' Stairway to the Stars - The History of Cinema in Devon in the Golden Age.'

Modbury History Society has been loaned a quantity of press cuttings and photographs regarding the Modbury May Fair, which was revived in 1972. The clippings mainly relate to the fairs held in the 1970s and the photographs show how ambitious the floats were during that time. The material will be displayed in the window of the Parish Room in Church Street, Modbury during May Fair week, after which some of the images will be uploaded onto the Modbury Heritage website.



The photograph shown here is of the much lauded 1975 Pegasus

35 foot long carnival float resting in Long Park. The mythological flying horse float was the dream child of Roger Pickles, who worked on it in secret for six months with the help of Melvyn Jeynes. Long may the carnival continue for another 50 years.

The next meeting is

9TH JUNE

PAMELA VASS

SUFFRAGETTES IN DEVON

If you would like further information please contact me at rosiejaneparker@gmail.com

Rosemary Parker



VOLUNTEERING OPPORTUNITY

The Devon Rural Archive at Shilstone is looking for volunteers to assist with digital marketing and events. This is an opportunity to gain voluntary experience with a charitable organisation committed to preserving our county's heritage, and would suit someone interested in Heritage, Marketing and Events careers. We are very keen to hear from those who enjoy creating

content for social media. The Archive is open Wednesday to Sunday 10.30 am - 4 pm, and we are flexible regarding number of hours you might like to volunteer with us.

For more information, please contact archive@shilstonedevon.co.uk.

The Devon Rural Archive is an independent heritage centre open to the public for the study of Devon's buildings and landscapes. It provides access to a unique collection of materials, including books, maps, oral history recordings and documents, relating to the history of the county, and hosts a programme of public events.

The Archive and its work is entirely funded by the Fenwick Charitable Trust (Charity Number 1007957). The Trust was established in 1992 for the preservation, protection and improvement of any listed buildings and any other property of national, historical, architectural, artistic or scientific interest and for the encouragement of access to and the study of the same.



Amber Goldhahn
Archive & Engagement Manager



MODBURY MESSENGER

COMMERCIAL ADVERTISING RATES MODBURY MESSENGER 2025

SIZE	Size - can be portrait or landscape	1 month (per insertion)	3-11 months (per insertion)	12 months (per insertion)	12 months (Year total)
1/8 page	45mm x 65mm	£30	£26	£16	£192
1/4 page	90mm x 130mm	£60	£50	£30	£360
1/2 page	130mm x 180mm	£108	£86	£50	£600
1 page	180mm x 250mm	£192	£148	£80	£960

The Modbury Messenger is an all colour publication, no preferential rates for black & white advertisements.

To advertise in the Modbury Messenger, contact the Editor, Lynne Barnes, via email on modburymessengercic@gmail.com with details of the size of the advert and how many months you wish to advertise for.

Modbury Messenger June 2025

The copy date for the June 2025 Modbury Messenger is **10th May**. Please email all articles, notices of events and paid advertisements to modburymessengercic@gmail.com.

The Modbury Messenger is published by Modbury Messenger CIC and is printed by ESP Print. The views expressed in the Messenger do not necessarily represent those of Modbury Messenger CIC.

The Editorial Committee reserve the right to précis/abbreviate any copy submitted for inclusion in the Modbury Messenger. Their decision is final. The contents of the Modbury Messenger may not be reproduced in any form without the prior written permission of Modbury Messenger CIC. Guidance for submitting material is available online at <http://modburymessengercic.co.uk/about.html>

Persons submitting entries with art or photographs not drawn or taken by themselves must confirm they have obtained copyright permission, or agree to pay any copyright fine which is subsequently raised

modburymessengercic@gmail.com

MODBURY MESSENGER CIC

Modbury Messenger CIC is a Community Interest Company and as such is registered by the Registrar of Companies for England & Wales, Northern Ireland or Scotland. A Community Interest Company is a special type of not-for-profit limited company which exists to benefit the community. The purpose of Modbury Messenger CIC is to disseminate information about events, notices and articles of interest to the people of Modbury and it does this by publishing the Modbury Messenger, a printed newsletter, every month with 1000 copies delivered to homes and businesses within the Parish of Modbury. An online copy of the Modbury Messenger is available to neighbouring communities, advertised via social media and on our website modburymessengercic.co.uk.

Advertisers are charged a fee for advertising in the Modbury Messenger and this covers the cost of producing the Modbury Messenger. The Board of Directors, Company Secretary, Editor, Proofreaders and Distributors are all volunteers.

Directors of Modbury Messenger: Diana Lynne Barnes & Bernard Taylor.

Company Secretary: George Rosevear FCIS.

Treasurer: Edward Holt

Editorial Committee: John Bower, Lynne Barnes, Ira Young.

Modbury Messenger CIC has produced the Modbury Messenger as an independent CIC since September 2018. Previously, it was published by Modbury Parish Council.

THE FLOOR SHOW



Your Local South Hams
Carpet & Vinyl Flooring Experts

7 Church Street, Modbury,
Devon. PL21 0QW

01548 830909

thefloorshowmodbury@gmail.com

www.thefloorshowmodbury.co.uk

GREENLANDS NURSERY

Higher Wizaller, Modbury, PL21 0SE



Shrubs and Perennials
Holly Wreaths. £8 & £12
Non drop Christmas Trees
£5 per foot



Jack's Magic Compost
Deliveries can be arranged

Local family run business excellent value

Tel: 01548 550491 or 07534 611587

Email brendagreenlandsmodbury@yahoo.com

We also have a good selection of marble based garden ornaments

- Bathroom and kitchen fitting
- Floor and wall tiling
- Leaking toilets/radiators/taps etc
- Radiator replacement and additions
- Shower pumps
- Links with local builder/electrician for larger installations if required

Chapman & Sons Plumbing Service



Small jobs welcome
Reasonable rates
Free quotes

Telephone 07468 466380 now
for a speedy and efficient service.


MARCHAND PETIT
COASTAL, TOWN & COUNTRY

For customers who expect more
from their estate agents.

Our Modbury team has a wealth of South Devon Estate
Agency experience, covering the coast and countryside.
Whether you're looking to buy or sell, contact our friendly
and knowledgeable team today.

**SALES | LETTINGS | AUCTIONS, CGT, IHT &
PROBATE VALUATION**



01548 831163 | modbury@marchandpetit.co.uk

4 Broad St, Modbury, Ivybridge PL21 0PS

www.marchandpetit.co.uk

HELEN MOORE
PROPERTY

POWERED BY
exp UK

Independent Estate Agents

Over 100 years combined
experience

Local. Approachable. Honest.

 01752 962162



Experience Premium Quality At Home Care with Visiting Angels

Visiting Angels provide exceptional assistance and personalised care for your loved ones to foster independence and enhance quality of life.

KEY SERVICES :

- Companionship
- Meal preparation and planning
- Light housekeeping
- Medication reminders
- Assistance with mobility
- End of life care
- Post hospital stay care
- Personal care



Visiting Angels South Devon

Call 01752 422105

southdevon@visiting-angels.co.uk

VisitingAngels 
QUALITY AT HOME CARE