



illustration - Amanda Brookes

For the People of Modbury & Brownston

Volume 25, Issue 320 - November 2025

## Top Class Entertainment Comes to Modbury

Rave reviews have circulated following another weekend of top-class entertainment at the Memorial Hall in Modbury. On Friday 19th October, the seating arrangement allowed for a partially standing audience. After a nice warm up from the Aquila combo, Martin Turner's Unofficial Wishbone Ash outfit demonstrated what great song-writing and pro musicianship is all about with a fabulous return to their original 1970's sound. Turner proved that age is no barrier if the songs are strong and an enthralled audience showed their appreciation to every number in response.

Saturday night had been sold out in advance as a tremendous atmosphere built for Kiki Dee and Carmelo Luggieri with seats filling early. Modbury is effectively still a new venue on the professional circuit, but its reputation is growing rapidly attracting interest from some fine established touring acts. That's not surprising either as the warm welcome surely encouraged the magnificent performance Kiki and Carmelo delivered over two spellbinding hour-long sets. Reinventing some well-known hits along with newer material, Carmelo provided expert guitar accompaniment for Kiki's perfect delivery, culminating in the appropriately titled 'I Got the Music in Me'.

The message spreading is that Modbury has music in the Memorial Hall, now too with the legendary Blues Rock band Dr Feelgood next to appear at the venue, followed by a very welcome return at Xmas from The Unravelling Wilburys. Tickets are already on sale and selling for these shows, and with maximum capacity being achieved we can promise further big names visiting Modbury in 2026.

**Rob Giles**

**FALCON**  
ENVIRONMENTAL SERVICES

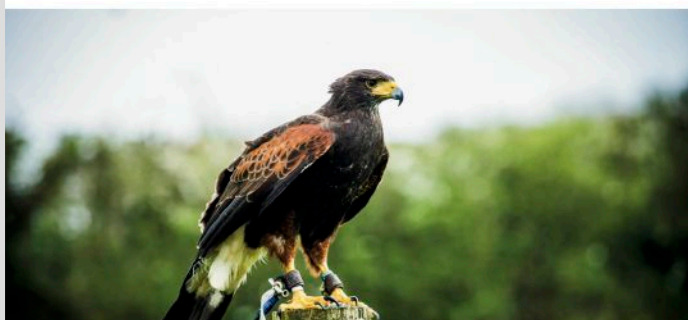
**Local trusted experts in:**

-  **Pest control**  **Wildlife management**
-  **Specialist cleaning**  **Bird control**

**We combine our environmentally-friendly approach with proven modern and traditional methods.**

**Call Us: 01752 929292 | [www.falcones.co.uk](http://www.falcones.co.uk)**

Google ★★★★★



*Christmas Lights*  
**SWITCH-ON NIGHT**

**FRIDAY 28TH NOVEMBER  
6PM**

CHURCH STREET, MODBURY

**Come and enjoy the festive atmosphere!**

PIPE BAND - CAROL SINGING  
- LANTERN PARADE -  
FATHER CHRISTMAS GROTTO  
- CHRISTMAS ROYALTY -  
LATE NIGHT SHOPPING  
& REFRESHMENTS



**Luscombe Maye**  
Since 1873



Our sincere thanks go to the numerous volunteers who make this wonderful event come to life!

**Christmas Lights Committee**



## MICHAEL R HAGGER

### Professional Painter & Decorator

City & Guilds Advanced Craft trained

Over 40 years decorating  
experience, with the last 26 years  
in the wonderful South Hams.

Fully Insured



For a friendly,  
no obligation  
estimate or  
reference

Tel: 07977445521



## MARTIN LEY PLUMBING & HEATING

- Oil Installations,  
Servicing & Repairs
- Unvented Cylinders
- Bathrooms & Showers
- General Plumbing

Tel: Modbury 01548 830609  
Mobile: 07811 934551

## Tall Orders Landscaping

All aspects of gardening

\*Hedge trimming / Tree work

\*Grass cutting - Lawns to Paddocks

\*Fencing / Turfing / Stump grinding

\*Weed control / Lawn Scarifying

### Logs Supplied

\*Locally sourced hardwood

\*Delivered in dumpy bags / nets

Tel . 01548 831139 / 07967258318



ARE YOU PAYING TOO MUCH TAX ?  
ARE YOUR ACCOUNTS AND TAX AFFAIRS UP TO DATE ?  
ARE YOUR ACCOUNTING SERVICES COMPETITIVE ?

FOR A SERVICE SECOND TO NONE CONTACT

### MARTIN E RANWELL, FCA ELLIOTT & PARTNERS

ACCOUNTANTS AND TAX CONSULTANTS

KINGSWAY, 10 THE PRIORY,  
MODBURY PL21 0TL  
AND AT 6 MODBURY COURT, 32 CHURCH STREET  
T. 01548 830432 M. 07763 526814

[martinranwell@googlemail.com](mailto:martinranwell@googlemail.com)

EXTENSIVE EXPERIENCE IN BOTH COMMERCE  
AND THE PROFESSION  
ALSO PROPERTY MANAGEMENT SERVICES



## Coastal Computers

PC & Laptop Repair / Upgrades  
Internet & Email Support  
Device Security & Protection  
Smart Home Devices  
Data Migration & Recovery  
General Guidance

[www.coastal-computers.co.uk](http://www.coastal-computers.co.uk)  
[info@coastal-computers.co.uk](mailto:info@coastal-computers.co.uk)  
07459 766420

## Modbury taxi



Contact  
Tel : 07455393693

### Modbury Private Hire Taxi

Pre booking is required for all local and longer  
distance journeys. This includes daytime,  
evening and airport transfers. Prices are  
agreed on booking.

Please don't hesitate to contact us if you have  
any questions.

07455393693



### Architectural Drawings and Planning Applications

Contact Alayne Harris B.D.  
0755 191 0874  
[info@designedspace.co.uk](mailto:info@designedspace.co.uk)

Based in Modbury



GEORGE H.W. ROSEVEAR  
& COMPANY  
A DIVISION OF HOLBROOK ASSOCIATES

ACCOUNTANCY, TAXATION AND  
COMPANY SECRETARIAL SERVICES

01548 831427

3 MODBURY COURT, 32 CHURCH ST.,  
MODBURY, DEVON, PL21 0QR  
[george@holbrookass.com](mailto:george@holbrookass.com)

## A.R.Hilder

B.Sc est 1985

### Garden design, care & Maintenance specialist

I can care for your borders,  
shrubs, trees, hedges,  
vegetable patch & fruit trees

FORMER VOLUNTEER NATURE RESERVE  
WARDEN AND FORMER HEAD GARDENER TO  
A CORNISH ESTATE WITH OVER 40 YEARS OF  
EXPERIENCE. I CAN HELP TO ENCOURAGE  
MORE WILDLIFE INTO YOUR GARDEN

Call 07762 269436 for free  
initial consultation





# THE PIRATES OF PENZANCE

29th April - 2nd May 2026

## Calling all Pirates, Policemen and Young Ladies of Modbury!

Modbury Players are putting on a show which will call for pirates, policemen and a group of slightly naughty young (or not so young!) sisters to act, sing and dance on stage. We will need children (minimum age 10) as well as adults to be pirates, policemen and sisters. We also need a small number of very strong adult soloists for the parts of Frederick, Mabel, Ruth, the Pirate King and the Major-General.

In addition we need a supportive "choir" 12 – 16 strong, sitting each side of the orchestra to join in with the chorus numbers. They will need to be confident singers, but they will have the advantage of being able to read from the score, and plenty of rehearsals beforehand.

We also have the usual and very important requirement for backstage crew, lighting and sound technicians, set-builders and painters, costume makers, hair and make-up artists and front of house and bar staff.

On the weekend of 22nd and 23rd November we will holding auditions in the Memorial Hall and we also ask that those who would like to help with the production offstage come along then to register their interest. Please watch out for further information on Modbury Nextdoor, including links to copies of audition songs.

"Pirates of Penzance" is brought to you by the team who produced Oliver. We look forward to seeing you later in November.

*Peter, Phil, Jo and Angie*

**STOP PRESS:** The theme for Modbury May Fair 2026 will be *Pirates*, tying in with the Modbury Players' production of Gilbert & Sullivan's *Pirates of Penzance*.





# BINGO NIGHT

HALWELL & MORELEIGH VILLAGE HALL

Moreleigh Cross

TQ9 7JQ

on

Friday 7<sup>th</sup> November

EYES DOWN @ 7.30PM

Great prizes and refreshments

(Do arrive early! It's a very popular event!)

The event is raising money for Modbury Caring  
Charity number 1070237



Friday 21st November  
8-11pm

Modbury Memorial Hall

Headliners  
Kit Hillbillies

Supported by  
Boomers

Charity music night for Trussel  
Trust food banks, St Luke's  
Hospice and Modbury Town  
Improvement Fund.



Tickets £10, includes first drink  
Bring your dancing shoes  
Licensed bar, raffle, tickets on sale from **Modbury Post  
Office**

Guardian journalist Tim Dowling: "The Kit Hillbillies:  
Excellent. See them soon."

Rootsy acoustic music featuring bluegrass, country blues and Americana,  
with the odd traditional folk and gospel song thrown in. Frequently gigging  
at pubs up and down both sides of the Tamar, regularly at the B-Bar in  
Plymouth and have featured at the Eden Project and Calstock Arts Festival



Winter  
**FuelStore**

**KILN DRIED LOGS  
SMOKELESS FUELS  
ECO BRIQUETTES  
KINDLING & FIRELIGHTERS  
CALOR GAS STOCKIST**

**PARKLAND  
SORLEY GREEN  
KINGSBRIDGE  
DEVON  
TQ7 4AF**  
**01548 852723  
07968 222008**  
**info@winterfuelstore.co.uk  
www.winterfuelstore.co.uk**



**COFFEE MORNING & CHRISTMAS BAZAAR**

**IN ST GEORGE'S CHURCH**

**DECEMBER 6TH 10AM - 1230PM**

**RAFFLE** CARE STALL  
RAFFLE  
REGIFTING  
CHILDREN'S CRAFT ACTIVITIES  
&  
MORE

**SUPPORTING ST GEORGE'S CHURCH**

# The Modbury Twinning Society: Join us at our wine tasting event in November

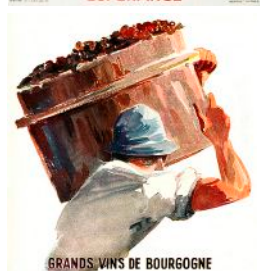


Modbury has always celebrated the values of community and international friendship. These principles found new expression in 1990 with the founding of the Modbury Twinning Society - a group dedicated to building cultural ties and lifelong connections with two picturesque towns in Brittany: Le Faou and Lanvéoc. After some years, Le Faou was unable to continue supporting the programme, but Modbury Twinning Society has gone on to build ever stronger links to Lanvéoc.

Town twinning has a long and cherished history in the UK, dating back to the years following World War II. The movement arose as a response to the devastation caused by conflict, with the goal of promoting peace, understanding, and cultural exchange between communities across Europe. British towns and their continental counterparts have since built strong relationships through regular visits, shared events, and enduring friendships. Today, hundreds of towns and villages across the UK are proudly twinned with communities in France, Germany, Italy, and beyond, each partnership unique, but all united by the spirit of cooperation and camaraderie.

Since formalising its association with Lanveoc in 2012, Modbury has hosted and organised a vibrant calendar of events designed to bring the two communities together. From the outset, the Society has worked to foster genuine relationships among families and individuals. The partnership offers residents of both towns the opportunity to experience each other's traditions, language, and way of life - strengthening the bonds of friendship year after year.

The heart of the Modbury Twinning Society lies in its varied and engaging programme of events. Over the years these have included lively quiz nights, convivial wine-tasting sessions, and cherished summer lunches that bring together members of all ages. In the past, and hopefully in the future, children have also been included with memorable trips to France giving Modbury youngsters the chance to broaden their horizons and deepen their understanding of French culture. Each event is carefully planned to be inclusive, welcoming both longstanding members and newcomers alike.

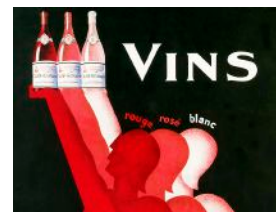


2026 promises to be especially significant, as Modbury prepares to host our friends from Lanvéoc once again. Plans are already afoot to make the visit a memorable one, filled with opportunities for learning, laughter, and shared experiences. The aim remains as it was in 1990: to promote cultural exchange, strengthen international friendship, and ensure that the legacy of town twinning continues to enrich both communities for generations to come. Visitors will be hosted by local families with the Twinning Society organising and paying for events during the stay.

We will be holding our annual **Wine Tasting Event** on **Saturday 22<sup>nd</sup> November in Silverwell Park** and would welcome anyone who would enjoy a convivial evening of French wine and food to attend. Tickets must be bought in advance from Robin Duckering [robin.duckering@gmail.com](mailto:robin.duckering@gmail.com). Any surplus funds raised will help our friends from Lanvéoc experience a wonderful time in Modbury.

For more information please contact  
Barbara Price [barbara@lordprice.com](mailto:barbara@lordprice.com)  
Siân Walker-McAllister [sian.walker-mcallister@outlook.com](mailto:sian.walker-mcallister@outlook.com)

Barbara Price



## VOLUNTEERING FOR MODBURY CARING

Do you have time to spare?

Are you recently retired?

Are you friendly and approachable and enjoy chatting with others?



Could you be a volunteer driver to transport those unable to drive themselves to and from their medical appointments? (We do pay a mileage allowance.) Could you spare a little time each week, or fortnight, to provide some companionship by befriending an isolated person?

If the answer to either of these questions is YES, please become a volunteer for Modbury Caring.

### Modbury Caring is looking for drivers and befrienders!

If you would like to be a driver, then please contact either Bill Cole on 01548 830913 or Sue Rogers on 01548 831289.

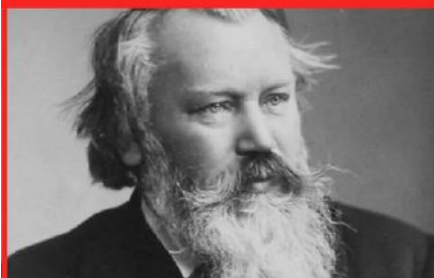
If you could be a visiting befriender, then please call Nicole Gardemann (our Befriending Co-ordinator) on 07473 034538.

PLEASE DO CONTACT US!



SC

Stanborough  
Chorus



Our 40<sup>th</sup> Anniversary Season opens with a special concert:

## BRAHMS' REQUIEM

The Stanborough Chorus and Guests

Saturday 22<sup>nd</sup> November at 7pm

St George's Church, Modbury

Conductor: Trefor Farrow

with Orchestra Leader Jonathan Storer

Soloists Mark Hounsell, Alison Naftalin

Look out for tickets – on sale soon!

Brownston  
Gallery

Book  
Launch



Come to the Brownston  
Gallery in Modbury on  
November 14<sup>th</sup> at 5:30pm  
(till 8pm) for the launch of  
Annabelle Gregory's  
moving new memoir  
*The Art of Becoming*.  
Annabelle is a noted  
local artist,  
and was the host at  
Bistro 35 for over 20 years.

BRONZE, FREE-RANGE TURKEYS  
TRADITIONALLY REARED AND PREPARED  
ON OUR FAMILY FARM FOR THE FINEST  
FLAVOUR AT CHRISTMAS

Also available- Potatoes, sausages, bacon and more,  
all produced on our farm in Kingston, Devon



Visit our online shop

[www.turkeysfromdevon.co.uk](http://www.turkeysfromdevon.co.uk)

Or for more information contact The Walters Family  
[turkeysfromdevon@gmail.com](mailto:turkeysfromdevon@gmail.com) or phone 01548 810259

Reared on our family farm in the South Hams

Accredited and annually inspected for high welfare and traditional quality by the  
Traditional Farmfresh Turkey Association

Collect your turkey direct from the farm (Kingston) or at one of our collection points: Lee Mill,  
South Brent or Wembury.  
Delivery also available.



Fitness studio & 24/7 Gym



Unit A  
Pearse Gardens  
Modbury  
PL21 0FX

★★★★★  
Over 100 5 star reviews

Contact us to book  
your 'No Sweat Intro'



[www.bomberspt.co.uk](http://www.bomberspt.co.uk)

[gym@bomberspt.co.uk](mailto:gym@bomberspt.co.uk)



[www.let-it-out.co.uk](http://www.let-it-out.co.uk)

The flexible approach  
to letting your holiday home

Gail Critchlow

07889 628514

Liz Baker-James

07388 673228



## Agri Innovation & Support Programme – Free Support for Devon Farmers

The programme provides bespoke, one-to-one advice for farmers across Devon who want to strengthen their business, explore diversification, or adopt regenerative and innovative practices.

There are two streams of support available:

- **Agri Innovation Support** – for farmers in Teignbridge, South Hams or West Devon, focusing on regenerative and innovative approaches to boost productivity and sustainability.
- **Farm Business Support** – for farmers in East Devon, Mid Devon and Teignbridge, offering guidance on succession planning, financial sustainability, and operational improvements.

All advice is free of charge and delivered by experienced local agricultural advisors with a practical understanding of farming in Devon.

👉 More details: <https://businessinfopoint.co.uk/agri-innovation-support/>

☎ Or call 01837 659 059 to register interest.

## Memorial Hall Play Park – advance notice of temporary closure

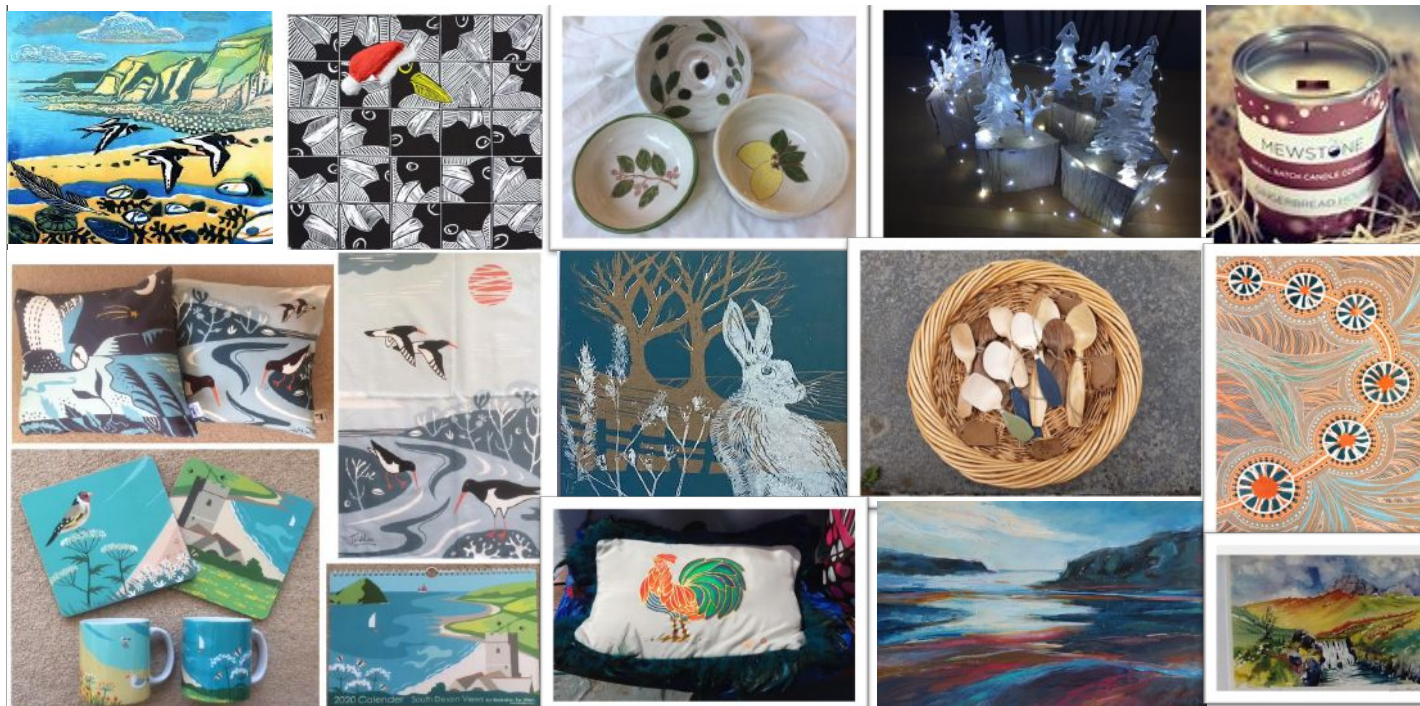
For some time now the Parish Council has been struggling to maintain the old timber fence between the upper and lower play areas at the Memorial Hall. Reluctantly, we have had to concede that it is now beyond economical repair.

Given that it is a key safety barrier in the play park we are planning to replace it with a brand new, improved fence. Following a recent tendering exercise, we have appointed Leaf it Out (SW) Ltd of Plymouth to undertake the work which is likely to take place during November.

For health and safety reasons, therefore, we will have to close the play park for a short period (hopefully no more than a week) whilst the works are carried out. We will post notices at the entrances to the play park to give more specific details of the closure once the details are finalised and we will, of course, use our website and social media feeds.

During the works, we shall be grateful if the closure is fully respected and request that parents keep their children away from the play park for the duration of the works.

**Phil Smith, Modbury Parish Council**



## Modbury Christmas Craft Fairs

Saturday 29<sup>th</sup> and Sunday 30<sup>th</sup> November 2025

11am -4pm refreshments available

Memorial Hall– Free entry

Beautiful handmade crafts from local artisans- different artisans each day





## Modbury Table Tennis Sessions

Wednesday Evenings  
07:30pm to 09:00pm  
The Pavilion,

Queen Elizabeth II Recreation  
Ground, Modbury

For all people aged 16 – 105  
Only £2.00 per session

For those of all abilities, it doesn't matter if you have never played or last picked up a bat many years ago. All equipment is provided, but you are welcome to bring your own bat if you have one. There is no need to book in advance, just turn up on a Wednesday evening and we will make you as welcome as we can.

If you would like to find out more phone Colin or Aly Low on 01548 830089, leave a message if we don't answer. You can send a text to 07551 939639 or email [colinalow@hotmail.com](mailto:colinalow@hotmail.com).

Colin Low

## Modbury Branch Royal British Legion



The next Meeting of the Modbury and District Branch of the Royal British Legion will be a social gathering after Remembrance Sunday service initially in The White Hart and then in the Exeter Inn if they want to.

David Scott

# SINGALONGA SPACE

... to Modbury & Beyond!

*A Modbury Players' unforgettable and  
unmissable production*

**Friday 14th November &**

**Saturday 15th November**

**Doors & Bar Open 7pm**

**Modbury Memorial Hall**

**Tickets £10**

**(£5 for Children) available from**

**Modbury Post Office**

**Don't forget to buy tickets early as they sell out!**

**Licenced Bar, Raffle & 'Space' Disco**

## AUNE VALLEY IN MODBURY

6 Church Street, Modbury



**Free Local Delivery\***

\*Terms & conditions apply.

Bring this with you to receive 10% off in the shop or cafe. Terms & Conditions Apply

**10%  
off**  
with this advert

[www.aunevalleymeat.co.uk](http://www.aunevalleymeat.co.uk)



**Craig Kensett**

Highly Experienced Carpenter

Home Improvement  
Custom Carpentry  
CIS Site Construction  
Projects Managed

Happy to discuss all types of work

07500 115177

[craigkensett@btinternet.com](mailto:craigkensett@btinternet.com)



# MODBURY COMMUNITY APPLE DAY

## Bumper Apple Crop Yields Record-Breaking 220 Litres of Juice

We approached this year's Apple Day with a combination of expectation and trepidation. All the indications were that Modbury's apple trees, in our own orchards and people's gardens, were going to result in a bumper crop. A fine spring, without strong winds delivered both blossom and good pollination. A long and hot summer ripened the apples, with rain arriving only in the pre-harvest period to swell them.

The trepidation was down to very changeable weather predictions. Would we be able to get the crop harvested? Would the school children be able to help or, with so many windfalls already on the ground and rain clouds threatening, would climbing the slope in the Millennium Meadow orchard be like walking on apple-sized slippery marbles? Well, we removed that hazard by raking up all the windfalls the day before which amounted to nine bags of perfectly usable fruit.

As the class from Year 6 at Modbury Primary arrived on the Friday morning, the weather broke for long enough to get the crop picked and bagged up. Huge thanks to Year 6 for their hard work and enthusiasm. The previous evening the Cubs had done an equally sterling job of harvesting the apples at the orchard in the Queen Elizabeth II Recreation Field.



The trepidation continued as our small band of three volunteer harvesters surveyed all the bulging apple sacks and realised every one had to be transported to the Modbury Therapy Centre yard, where we would be setting up the apple pressing production line the next day. There is no vehicular access to Millennium Meadow, so every sack had to be wheelbarrowed to a car and shuttled into Church Street. Thanks, Ann and Alison, for your tireless help. By the evening, the wind had really picked up so, sheltered on all sides as the yard was, we decided to only erect the roof frame of the gazebo, tie it down and leave the cover in the barn for the following day.

Saturday dawned with a brighter and drier Apple Day than we expected. We set up the production line. Apples were washed, chopped in the scatter, the resulting juice-laden pulp stacked in cheeses in the press before the top was closed and the slow and steady process of pressing the juice out could begin.

It was wonderful to see so many visitors from Modbury, nearby villages and as far away as Catalunya, all helping with different parts of the process and enjoying being part of the team. It was particularly pleasing to see many young families and, with parents supervising, children were encouraged to join in safely.

People were already asking if they could take some juice home (for which we ask a donation) so it was time to start bottling. At this point I was really pleased that our earlier appeal for screw cap bottles had resulted in just over 90 bottles being delivered to my garden gate. They were all soaked to remove labels then washed inside and out before being sterilised. Thank you to everyone who took the trouble to donate their bottles. You will be pleased to know that, with such a large crop, we used every single one, as well as those we had bought, along with several 5-litre freezable pouches and 10-litre pouch boxes.

Fortunately, we had the foresight to hire two pasteurisers this year, always the slowest part of the process. Even then, Charlotte and Andy did not finish pasteurising until 6:00pm. However, we now have a good supply of juice that will keep for a year or so without refrigeration and can be used at future community events or made available to Modbury folk for a donation towards the cost of running Apple Day and Wassail.

Huge thanks to everyone who helped make our 9<sup>th</sup> Apple Day such a success and special thanks to Mandy and Steve Hyde for allowing us to use their superb venue. Along with our January Wassail, these events, run by Modbury's Community Orchard Group, are now firmly embedded in the Modbury calendar.

Later this autumn, we will be running a pruning workshop before getting the Apple Trees in Millennium Meadow in good shape for next year. Look out for further news and join us as a volunteer for the day.

**Colin Whybrow**





## HOW CAN I HELP YOU AS YOUR LOCAL MP?



Hello, I am Caroline Voaden, your MP for South Devon. If you need my help with an issue you are facing, you can email me at: [caroline.voaden.mp@parliament.uk](mailto:caroline.voaden.mp@parliament.uk) or call my office at 01803 658461.

As part of my remit as your MP, I can assist with any challenges that are the responsibility of a national government department, such as pensions, passports, and benefits.

If you are unsure if your challenge is covered by this remit, visit the UK Parliament website to check, or contact me and I would be happy to guide you to whoever is best placed to help. I look forward to hearing from you.

**Caroline Voaden**

**FIONA'S FANCY FEET**  
DANCE SCHOOL

**CLASSES IN MODBURY  
AND KINGSBRIDGE**

Scan the QR code

CONTACT FIONA ON  
07800883367  
[FIONASFANCYFEET@GMAIL.COM](mailto:FIONASFANCYFEET@GMAIL.COM)  
[WWW.FIONASFANCYFEET.ORG.UK](http://WWW.FIONASFANCYFEET.ORG.UK)

CELEBRATING 10 YEARS

**imakewebsites.**

**NEED A NEW  
WEBSITE?**

**I CAN MAKE IT!**

Contact Vicky  
01548 831910  
[www.imakewebsites.co.uk](http://www.imakewebsites.co.uk)

**BIGBURY  
CAMPING  
BARN**

Shake off the winter blues with an uplifting and revitalising spa day, available for your exclusive use.

Contact Cathy 01548 810079  
[info@bigburyholidays.co.uk](mailto:info@bigburyholidays.co.uk)  
[www.bigburyholidays.co.uk](http://www.bigburyholidays.co.uk)

## MODBURY PARISH COUNCIL

Modbury Parish Council Office, 1 Modbury Court, PL21 0QR  
Tel: 07467134225 email [parishclerk@modburyparishcouncil.gov.uk](mailto:parishclerk@modburyparishcouncil.gov.uk)

### Your Councillors are:

Bill Cole	01548 830913
Chris Field	07836 592854
Richard Foss	01548 721420
Barbara Price (Chair)	07739752095
Tony Price	07801837129
Phil Smith (Vice Chair)	07759282404
Dave Trigger	07808742372
Ann Turner	01548830606
Sarah Wyatt	07794 662903

[chrisfield@modburyparishcouncil.gov.uk](mailto:chrisfield@modburyparishcouncil.gov.uk)  
[richardfoss@modburyparishcouncil.gov.uk](mailto:richardfoss@modburyparishcouncil.gov.uk)  
[barbaraprice@modburyparishcouncil.gov.uk](mailto:barbaraprice@modburyparishcouncil.gov.uk)  
[tonyprice@modburyparishcouncil.gov.uk](mailto:tonyprice@modburyparishcouncil.gov.uk)  
[philsmith@modburyparishcouncil.gov.uk](mailto:philsmith@modburyparishcouncil.gov.uk)  
[davetrigger@modburyparishcouncil.gov.uk](mailto:davetrigger@modburyparishcouncil.gov.uk)  
[annturner@modburyparishcouncil.gov.uk](mailto:annturner@modburyparishcouncil.gov.uk)  
[sarahwyatt@modburyparishcouncil.gov.uk](mailto:sarahwyatt@modburyparishcouncil.gov.uk)

**How can we help you?** Councillors run drop-in surgeries on Sat. 10:00 - 11:00 am in the Parish Office at 1 Modbury Court. The Parish Clerk is in the Parish Council office on Tues & Wed, 10:30 am – 5:00pm. Call into the office, phone, email or come along to our meetings at 7:00 pm in the Pavilion, QEII Recreation Ground on the first Tuesday of every month and speak in the public forum.

### Devon County Councillor (Salcombe Division):

Louise Wainwright

Tel: 07908 525663

[louise.wainwright@devon.gov.uk](mailto:louise.wainwright@devon.gov.uk)

### South Hams District Councillor (Charterlands Ward):

Bernard Taylor

Tel: 01548 830844

[Cllr.Bernard.Taylor@southhams.gov.uk](mailto:Cllr.Bernard.Taylor@southhams.gov.uk)



# Modbury Parish Council Meeting

Tuesday 7th October 2025, 7:00pm

Present were seven councillors, Cllr Louise Wainwright (Devon CC) and three members of the public. Apologies were received from Cllr Chris Field and Cllr Bernard Taylor (South Hams DC).



## There was a brief talk by a representative from the Four Rivers Dementia Alliance, Claire Puckey

"We can't change the person living with dementia, but we can change and improve the relationship they have with their community". Claire gave a comprehensive account of what help may be available to Parishes to make them dementia-friendly. More information can be found on the Four Rivers Dementia Alliance website and Claire will be invited to a future meeting of the MPC Community Engagement Working Group to discuss this further.

**Public Forum:** A member of the public, living in Long Park, has an issue with the proposed closure of the disabled parking space towards the top of Church Street. The notice from SHDC was badly placed. It is used by her and others and they would like support from MPC to retain it.

## Report from Louise Wainwright, Devon County Councillor

- The reorganisation of local government proposes Neighbourhood Area Committees, another wide-ranging layer of consultation between the new Local Authority and the community.
- Louise has met with Modbury Caring to examine ways in which she can offer support.

## Report from Bernard Taylor, SHDC Councillor

- SHDC has been through many public engagements to relay understanding of local government reorganisation before submitting to Government by 28<sup>th</sup> November.
- Bernard Taylor held his Civic Lunch at Shilstone Manor on the 27<sup>th</sup> of September with over 100 guests and raised over £900 for prostate cancer.

**Matters arising from the September MPC meeting:** MPC has been in touch with South West Water regarding their plans for improving surface water runoff in Modbury. The reply was to say that they still have plans to do that, but cannot give us a timeline other than that work should commence in 2026; MPC feel that this is an inadequate response and are pressing for action. Concerns over SWW work in Church Street without warning or explanation have been raised with both them and DCC Highways.

**OPCC CCTV:** The Police Commissioner for Devon and Cornwall has established a sum of money to install CCTV to reduce crime. Due to recent vandalism at the Queen Elizabeth II Recreation Ground, MPC will be applying for a grant for this work.

**Emergency Planning Working Group:** The group has been set up and the inaugural meeting was held on the 30<sup>th</sup> September. Interested parties will consider what can be done and the next meeting will be in November.

**Updated Priorities Report for DCC Highways:** The earlier report has been updated by Cllr Smith prior to a DCC site visit later in October. Crucially, priorities have been emphasised, especially after the experience of the flooding events of this summer.

**Councillor Recruitment:** MPC needs more councillors and we will be looking for volunteers with particular interests, starting with a notice for someone with an interest in Championing Youth Participation. Please see the notice on p12 of this edition of the Modbury Messenger.

## Sustainability & Maintenance

- Modbury will be hosting a half-day event on a Saturday in January under the aegis of *Sustainable South Hams* to bring together organisations of interest.
- MPC are looking for sources of funding for solar power provision at the Queen Elizabeth II MARS Pavilion.
- A more co-ordinated and integrated approach to landscape maintenance is required and will be taken.
- Funding was agreed for the replacement of the degraded internal fence in the Memorial Hall play area.

**Date of next meeting: Tuesday 4<sup>th</sup> November 2025 @ 7pm, QEII Pavilion**

**Tony Price**

## Modbury and South Hams Creative Writing Group



We at The Modbury and South Hams Creative Writing Group meet every month to read and discuss our work. We are a small group of lively individuals who write for all sorts of different reasons. Each month we set ourselves a challenge or theme to hang our ideas on (although we have been known to completely digress).

We are keen to welcome new members, so if you enjoy creative writing, why not join us. We meet usually on the first Saturday of the month, at the Queen Elizabeth II Pavilion in Modbury at 10.00am.

[www.facebook.com/modburyc creativewritinggroup](https://www.facebook.com/modburyc creativewritinggroup) or call 07767 393802.



# Call for Parish Councillors: Championing Youth Participation in Modbury

## Join Modbury Parish Council and Help Young Voices Shape Our Community

**Introduction:** Modbury Parish Council is seeking an enthusiastic and committed individual to join as a councillor, with a particular focus on youth work and youth participation. If you are passionate about supporting young people and want to make a tangible difference in our community, we would love to hear from you. This is an exciting opportunity to contribute to Modbury's future while developing your own skills and experience.



**Who We're Looking For:** We welcome applications from anyone with an interest, knowledge, or background in youth work, youth engagement, or youth participation. Whether you have professional experience, volunteer involvement, or simply a strong commitment to helping young people thrive, your perspective and drive are highly valued.

**Why This Role Matters:** Young people are a vital part of our community, and their voices are essential to shaping the services, activities and opportunities available to them. As a Parish councillor, as well as participating in the overall work of the council, you will play a key role in ensuring that young people are heard, their needs are understood, and they are actively involved in decisions that affect them. You will support the ongoing development of activities for young people in Modbury (subject to finances) and work directly with young people, helping to create an environment where they can flourish. As we envisage the person appointed may be working directly with young people, a DBS check will be required for this volunteer role.

### Opportunities and Benefits:

- Develop valuable skills in leadership, communication, and community engagement
- Enhance your CV with practical experience in local government and youth work
- Take on interesting and varied responsibilities, working collaboratively with other councillors and local partners
- Make a real difference to the lives of young people in Modbury

**How to Apply:** If you are interested in joining Modbury Parish Council as a councillor with a focus on youth participation, please contact the Parish Clerk at [parishclerk@modburyparishcouncil.gov.uk](mailto:parishclerk@modburyparishcouncil.gov.uk) for more information and an application pack. We also welcome informal enquiries—don't hesitate to get in touch to discuss the role further.

Join us in supporting, empowering, and inspiring the next generation in Modbury.

**Barbara Price**



*Expert care. In the comfort of home.*

See how our Live-in Care services can help your loved ones stay in the place they feel best.

Call us for a friendly chat on

**01752 347 700**



*It's good to be home*

Or visit  
[plymouth@bluebirdcare.co.uk](mailto:plymouth@bluebirdcare.co.uk)



## walk&talk

November's walks will be Tuesday 4th, 11th, 18th and 25th November.

The venue and travel arrangements for each of the walks will be discussed at the previous week's walk and decided according to the weather forecast for the walk day.

Walk leader contact details:-  
Sue Rogers 01548 831289  
Jean Wright 01548 810029



## St George's Church, Modbury



pray

**KIDS' CHURCH** - Kids' Church meets in Modbury Primary School. Parents, please drop off your Explorers (age 9+) and Discoverers (age 6-8) at the school from 9:15 am where they will be met by one of the leaders. After Kids' Church, the youngsters will be taken to St. George's to be with their parents at the end of the service. Climbers (age 0-5) will remain in St. George's, meeting their leader to be taken to the Lower Vestry. If you have any questions regarding Kids' Church, please contact Sara Chapman on [s.chapman@modburyteam.org](mailto:s.chapman@modburyteam.org).

For St George's Parish enquiries contact Mrs Gill West, Churchwarden 07849253605

	Service	Service Leader
<b>November 2nd</b>	Holy Communion and Kids' Church 9:30 am	Rev. Simon Franklin
<b>November 9th</b>	Holy Communion (BCP) 8:00 am Service of Remembrance 10:00 am	Rev. Oli Long Rev. Oli Long
<b>November 16th</b>	Holy Communion and Kids' Church 9:30 am	Rev. Oli Long
<b>November 23rd</b>	Sunday Worship 9:30 am	Rev. John Elliott
<b>November 30th</b>	Team Service for the Modbury Mission Community 10:30 am Rooted - a service of contemporary worship 6:00 pm	The Rt. Rev'd James Grier, Bishop of Plymouth Rev. Oli Long

## Christian Comment: Good News

Modbury Mission Community has been working hard together, with the support of the Diocese, to find a new team vicar. We are very pleased to announce that the Rev. Oli Long, our existing curate, has been offered the post subject to the successful completion of his curacy. The induction service should take place in late January. The date will be advertised and everyone is welcome to attend.

Jesus teaches that leadership in the church should be different to the leadership we see in the secular world, which can often be seen as overbearing and marked by selfish ambition. Church leaders in contrast should see themselves as humble servants focusing on the needs of others, as modelled by Jesus himself. This challenging approach is made workable by each church member recognising and contributing their gifts, to build up the life of the church. So we pray that Oli will feel greatly respected and supported as he takes up the challenging role of Rector of Modbury Mission Community.

So, who will be the main beneficiaries of our Mission Community under new leadership? This has previously been summed up by William Temple who became Archbishop of Canterbury in 1942. He said, "The church is the only organisation that exists for its non-members." We are here to serve the needs of our local communities of Modbury, Aveton Gifford, Bigbury, Kingston and Ringmore.

Please do feel able to seek our support and even join one of our churches.

*Gilbert Snook, Licensed Lay Minister*

### Stanborough Chorus

40th Anniversary Season

### BRAHMS' REQUIEM

**Saturday 22nd November @7pm**

**St George's Church, Modbury**

Conductor Trefor Farrow

Orchestra Leader Jonathan Storer

Soloists Mark Hounsell and Alison Naftalin

Tickets £18: available from all choir members;

Kingsbridge Information Centre, Modbury Post Office

### St Monica's Roman Catholic Church, Modbury

No weekly mass at present

### St Austin's Priory Roman Catholic Church, Cadleigh

Mass weekly at 11:30 am  
on Sunday

Phone: 01752 895888

Web: [staustinsivybridge.co.uk](http://staustinsivybridge.co.uk)





## BISHOP OF EXETER – RIGHT REVEREND DR MIKE HARRISON VISITS THE WOODLEIGH DEANERY AND ST GEORGE'S CHURCH

On Wednesday 1st October, the Bishop of Exeter, Rt Reverend Dr Mike Harrison, visited the Woodleigh Deanery. He started his tour by leading a Holy Communion Service at Stokenham Church, then visited Charleton Farm before attending the Primary School. Next he met pupils and staff at Kingsbridge Community College where he sampled a School lunch.



In the afternoon, he went to Salcombe where he met some yachtsmen before driving to Modbury, where he was met by myself, David Scott, the Woodleigh Deanery Treasurer, who oversees the 30 parishes in the Deanery. I knew from his visits to the Bishop's Garden in Exeter that the Bishop is an apiarist – a keeper of bees, and so I presented the Bishop with a jar of Modbury Honey. The Bishop then had tea and cakes, meeting many folk from the town and Mission Community Churches, before leading a shortened form of Evening Prayer, that had been planned by Curate Rev. Oli Long, who will become the new Team Rector of the Modbury Mission Community.



*David Scott*

## Holbeton Film Club



November's film **A Complete Unknown** (certificate 15) is a biographical drama starring Timothée Chalamet as Bob Dylan, chronicling his meteoric rise from the early 1960s folk music scene to his groundbreaking performance with an electric sound at the 1965 Newport Folk Festival.

This is screening on **Saturday the 8th November 2025** in Holbeton Village Hall. Doors open 7pm. The programme starts at 7:30pm. Tickets on the door are still only £4 (card or cash). Ice creams on sale for £1.

Our programme continues with:

Paddington in Peru, PG	Friday 12th December
Mr Burton, 12A	Saturday 10th January 2026
The Penguin Lessons, 12A	Friday 13th February 2026



01752 830274, [harryluson@gmail.com](mailto:harryluson@gmail.com) <https://holbetonfilmclub.com/>

*Harry Baumer*

## MODBURY TOWN CRIER GOES TO SCHOOL AND THEN TO APPLE DAY

On Saturday 4 October, I was invited, as Modbury Town Crier, to open the BLUEprint for Rivers Summit which was a seminar taking place at Kingsbridge Community College and brought together local partners to enable farmers, landowners, community groups and local government to take practical actions to reduce pollution of rivers and estuaries.



This had been planned by Louise Wainwright and after my opening cry, our local MP, Caroline Voaden, Cllr Paul Arnott – Deputy Leader of Devon County Council and Cllr Caroline Leaver – Chair of Devon County Council all expressed a need to have clean rivers and clean seas.

Afterwards, the Town Crier helped at Apple Day.



*David Scott*

## Modbury Christmas Lights

One of Modbury's great signature community events approaches – the annual **Christmas Lights Display!** On **Friday 28<sup>th</sup> November**, Church Street will be closed at 6:00 pm to allow the crowds to welcome the big Lantern Parade down from the school, including the Christmas Royalty and the splendid Plymouth Pipe Band, with the Town Crier calling the switch-on at 6:15 pm.



You may have seen the Elves on weekend mornings, putting up the lights (LEDs to save energy!), traders' trees and the big tree, beaver away rain, wind or shine as Santa is such a hard taskmaster. They would very much like to see you on the 28<sup>th</sup> for an evening of fun and frolic, and help with the countdown to switch-on.

Our traders will have festive treats, to entice you into their own grottos, with the official Santa's Grotto to delight the children in the yard of the Curator/Therapy Centre. Please try to bring some small change in case you are feeling generous. We are always grateful for extra help on the night, so if you are able to assist with marshalling, please get in touch - [tp@lordprice.com](mailto:tp@lordprice.com)

Don't forget that there is free parking on the three Saturdays in December to make it easier to get to those wonderful shops of ours!

**Tony Price**

---

## MODBURY POPPY APPEAL



The annual Poppy Appeal launched this year from outside the Post Office at 10am on Saturday 25<sup>th</sup> October. Poppies are available from the Post Office and Co-op along with other locations in the town and surrounding area.

The usual stand will be located in the Curator gates on Saturday 8<sup>th</sup> Nov, where past and currently serving members of our military community will face whatever challenging conditions this autumn chooses to inflict on us!

A QR code is included here, through which the good people of Modbury can contribute directly to the Modbury Branch Poppy Appeal from the comfort of their homes, should they wish.



**Ade Atkinson**

---

## MODBURY RBL WILL REMEMBER ARMISTICE DAY

On Tuesday 11 November 2025, Armistice Day, as peace was declared at 11 o'clock on the 11<sup>th</sup> month in 1918 and World War I ended, there will be special events being organised to remember the end of this conflict. At 9:30am there will be a special flag hoist taking place at Palm Cross Green and then at 10:00am there will be a short service at the Modbury War Memorial being led by our curate, Rev. Oli Long.

It is to be hoped that many people will be able to attend both of these events as Modbury as a community will remember the sacrifice of those people who fought for freedom.

**David Scott**

**NC** NEALE'S  
CAVERN

We are based in  
Modbury - PL21 0PS

Contact us on: 07920 461079

Email:  
[info@nealescavern.com](mailto:info@nealescavern.com)

Bookings can be made from  
our Webpage -  
<https://www.nealescavern.com>

WE ARE OPEN MON - SAT  
10:00AM - 18:00PM

**WE DO REPAIRS!**  
**BRING YOUR DEVICE**  
The Premier Gadget Repair Centre  
You Break it.... We FIX it!!!

Neale's Cavern can help you with your faulty phone, device, tablet, or gadget. One of our skilled technicians will quickly repair your phone and have it back to you as soon as possible.

We repair all makes and models of Mobile phone, iPad, Laptop, MacBook and GHD repairs.

We also sell  
Stationery, batteries, Dog treats, Hardware, Electrical, Fire wood and Coal, Paint brushes, Cleaning and Phone/iPad leads & Chargers.

---

## SERVICE OF REMEMBRANCE

There will be the Service of Remembrance at 10:00am on Sunday November 9<sup>th</sup> at St George's Church, Modbury, led by Rev. Oli Long.



All are invited to join in this service to remember those that

Lost their lives in conflicts world wide in the last century and in this.



## A Choral Legacy: Stanborough Chorus Celebrates 40 Years!

On a crisp autumn Monday evening, the rehearsal room hums with energy. Coats are draped on chairs, pencils and music scores at the ready, and the air vibrates with the rich sound of Brahms' Requiem. Between bursts of glorious harmony, laughter and chatter fill the space.

"It's a demanding piece, that's for sure!" laughs Andrea. "But it does give you goosebumps when it comes together."

Excitement is building as the Stanborough Chorus prepares for its special 40th Anniversary Concert on Saturday 22nd November at St George's Church, Modbury. Under the inspiring direction of Trefor Farrow, rehearsals are filled with warmth, encouragement, and the occasional good-natured reminder to "keep the right-shaped mouth" when reaching those higher notes!



Brahms' Requiem was chosen for its message of comfort and hope. Unlike the traditional requiem masses by Mozart or Verdi, Brahms' masterpiece focuses not on prayers for the departed, but on offering consolation to the living through lush harmonies and sweeping movements.

There really is something powerful about performing this piece, Brahms speaks of comfort and humanity, and it feels even more special to share it with our community as we celebrate forty years of singing together.

Choir member Chris adds, "The superb refurbishment of Saint George's Church and the fantastic response we always get from the audience there combine to offer a perfect evening, whether you're a dedicated fan of the classics, or just enjoy an evening of live uplifting music".

For four decades, Stanborough Chorus has welcomed singers from across the South Hams, some seasoned musicians, others complete beginners, all united by a love of music and community. As Trefor puts it, "Without doubt, singing is one of the most therapeutic activities one can do, and to do it with a group of friends and likeminded people really is extraordinary".

Although based in Kingsbridge, the choir proudly calls Modbury home for its major annual concert. As with many of the performances, the Chorus will be joined by professional soloists and orchestra for what promises to be a magical night of music, a fitting celebration of forty years of harmony, friendship, and song. And in the spirit of inspiring the next generation, children go free!

If you love to sing and be part of something uplifting, why not join us? The Stanborough Chorus welcomes new members of all ages and abilities. Find out more and to buy tickets visit [www.stanboroughchorus.com](http://www.stanboroughchorus.com).

**Karen Findlay**

## MODBURY HISTORY SOCIETY AND TOWN CRIER REMEMBER THE BATTLE OF MODBURY 1643

On Sunday 14 September, there was a visit to St George's Church by a large party of 33 members of the Prowse family association who had come from various parts of the world, including Australia, America and Canada in order to learn more about their ancestor, Lt Col Prowse, who had led the Parliamentary troops to battle with the Royalists' army fighting for King Charles I during the English Civil War. The visit had been organised by Cllr Malcom Prowse, from North Devon and he had spoken to Rosemary Parker, the Secretary of the Modbury History Society, who in turn spoke to David Scott, the Town Crier, who agreed to give this impressive large party a welcome to St George's Church and then a tour around its features associated with the Civil War period. The party had planned to visit other areas associated with their ancestors, having seen some graves in South Brent and were heading next to Totnes. It was good to explain some of Modbury's unique history and the fact that the King's troops had to escape to Plymouth down Runaway Lane. The photograph shows the large party in the Remembrance Chapel.



**David Scott**

# FLINT GARDENING SERVICES

*Local, friendly, professional.*

Tom Flint, RHS qualified gardener, has recently moved to Modbury.

Tom offers practical, hands-on advice backed by insurance and years of experience.

With a team of hardworking, knowledgeable gardeners on hand to help, Tom is delighted to offer Modbury residents:

- Weeding
- Pruning
- Hedgecutting and laying
- Lawn care and maintenance
- Chainsaw/tree work (NPTC insured and qualified)

Please call Tom for a friendly, no obligation chat.  
0785 232 6786 email [tpcf.flint@btinternet.com](mailto:tpcf.flint@btinternet.com)

## GARDENING JOB

Regular hours available locally.

Applicants must be hard working, willing to learn and have a good sense of fun.

For an informal chat about a rewarding job offering considerable scope for personal development, contact:

Tom Flint: 0785 232 6786 [tpcf.flint@btinternet.com](mailto:tpcf.flint@btinternet.com)





Including:

Stone Walling • Retaining Walls • Groundworks  
Drainage & Irrigation • Driveways  
Patos & Paths • Gates • Fencing & Decking etc

Family Business Since 1976  
Company No.3942610

Competitive Quotes Given, Full Insurance

Gatcombe Mill - Littlehempston - Totnes - TQ9 6LW

Office: Tel- 01803 864 871  
Email: [enquiries@afbrown-sons.co.uk](mailto:enquiries@afbrown-sons.co.uk)  
Web: [www.afbrown-sons.co.uk](http://www.afbrown-sons.co.uk)



Do you or a loved one need a little extra help?

**WE ARE HERE TO HELP**

Carers Direct SW Ltd is local not-for-profit care team of dedicated, well trained, friendly, local carers.

We can provide from one hour to 24-hour care.

Tasks undertaken include personal care, meal preparation, prompting medication, appointments and social outings.

Contact us for more information on:

01548 854358 or Email. [office@carersdirect-sw.co.uk](mailto:office@carersdirect-sw.co.uk)

You are welcome to pop in and see us at our office:

Unit 2N South Hams Business Park, Churchstow,  
Kingsbridge, Devon TQ7 3QH

CARERS DIRECT (SW) Ltd

www.drfeelgood.org

**DON'T MISS**  
THE MOST  
DYNAMIC LIVE  
BAND ON THE  
CIRCUIT!

**DR FEEL GOOD**

**MAXIMUM  
R'n'B.!!**

**ONLY  
SOUTH-WEST  
PERFORMANCE  
2025/2026 !!**

**BRITAIN'S PREMIER  
RHYTHM & BLUES  
BAND**

**A LEGENDARY BAND  
WITH A LEGENDARY  
HISTORY !**

Expect all the hits  
and much more....  
"ROXETTE"  
"SHE DOES IT RIGHT"  
"MILK & ALCOHOL"  
"BACK IN THE NIGHT"  
"DOWN AT THE DOCTORS"  
"GOING BACK HOME"

**FRIDAY 28TH NOV DOORS 7:30 PM**

**MODBURY  
MEMORIAL HALL**

Back Street, Modbury, PL21 0RF  
Information Hotline: 07828 289269

Support from the ever popular

**REDHOUSE**

Advance Tickets £22.50  
from: Modbury Post Office  
14 BROAD STREET PL21 0PU  
or WeGotTickets.com

WeGotTickets



**Est. independent  
LOCAL ELECTRICIAN**

**Dependent, honest  
and reliable service**



**LightWorks**  
Domestic Electrician

- Complete rewires and new builds
- New 18th edition Consumer Units/Garage Units
- Landlords & Insurance Certificates
- Domestic electrical fault finding
- Specialising in garden, kitchen and floor lighting from planning to certification

All work guaranteed/certificated  
Fully insured, qualified &  
registered with NICEIC



Call Phil for a free, no obligation quote or callout

**Tel: 07769 840012**

Email: [lightworks.electrics@gmail.com](mailto:lightworks.electrics@gmail.com)



## MODBURY MASTERS WARGAMING CLUB

We are a friendly and passionate wargaming society based in South Devon, dedicated to bringing together local enthusiasts of tabletop gaming, historical battles, and immersive roleplay.

Wargaming, board games, RPGs and more, at Modbury Masters, we love all things wargaming – from epic Napoleonic clashes and gritty WWII skirmishes to imaginative sci-fi battles and classic cowboy showdowns. Whether you're into board games, miniatures, or RPGs, there's always something happening at our club.

New members welcome - Our next meetup is on the 11th November 2025, 7pm at the White Hart, Modbury.

**Howard Williams**



### NOAH'S ARK

Baby and Toddler group

Varied fun activities

Refreshments

Toys

Songs

Bible story

Chat



Every Wednesday in term time  
9.30 – 11.00am

QE2 Recreation Ground (PL21 0FS)  
£2 per family

Contact: [s.chapman@modburymasters.org](mailto:s.chapman@modburymasters.org)



### Modbury History Society

The next meeting of Modbury History Society will be held at 7.30pm on Tuesday, 11th November 2025 when Clive Charlton returns and will talk about 'The Edgcumbe Family.'

The History Society meets at the MARS Pavilion in the Queen Elizabeth II Recreation Ground, Chatwell Lane, Modbury PL21 0FS where there is ample parking. The current series of eight lectures started in September. Membership of the society is £20 per annum but guests are welcome to attend individual meetings for a fee of £5.

If you have any photos of MODBURY at CHRISTMAS time in previous years, which we could copy for a display to coincide with Modbury Christmas lights switch-on, then please contact me at the email address below.

Please look at the Modbury Heritage website, which is a comprehensive database with a wealth of information about the town, including historic photographs, a walking guide and parish records of use to family historians.

[www.modbury-heritage.co.uk](http://www.modbury-heritage.co.uk)

For further information please contact [rosiejane.parker@gmail.com](mailto:rosiejane.parker@gmail.com).

**Rosemary Parker**



 **Luscombe Maye**  
Since 1873

## The Luscombe Maye Advantage

To find out how much your home is worth, please call or email Eleanor, Sara or John in the Modbury office.

For more information contact  
[modbury@luscombemaye.com](mailto:modbury@luscombemaye.com) or  
call 01548 830831

[luscombemaye.com](http://luscombemaye.com)  [luscombe maye](https://www.facebook.com/luscombemaye)  [luscombe\\_maye](https://www.instagram.com/luscombe_maye)





Visit us at our dedicated Wellness Sanctuary

**Blissful Yoga.  
Workshops & Events.  
Coffee & Shopping.**

[WellnessWarriorsYogaStudio.co.uk](http://WellnessWarriorsYogaStudio.co.uk)

Modbury High Street, 2C Broad Street, Modbury PL21 0PS



**Sarah Wyatt**

Independent Civil Celebrant

**Weddings, Namings, Vow Renewals,  
Funerals – Celebration of Life**

MAKING MEMORIES WITH BEAUTIFUL CEREMONIES

Tel: 07794662903 Email: [circlecelebrantsarah@gmail.com](mailto:circlecelebrantsarah@gmail.com)

[www.circlecelebrancy.co.uk](http://www.circlecelebrancy.co.uk)



**Coastal**  
Garden Services

Tree Surgery & Landscape Management

**Contact: Andy Walker on 07793 056898**

**[info@coastalgardenservices.co.uk](mailto:info@coastalgardenservices.co.uk)**

Working in the South Hams for 12+ years

Fully insured - NPTC & RHS qualified



**ERMINGTON HOUSE**  
Quality Residential Care



Ermington House

***Quality Care 24 hours a day in an idyllic location***

- 24-hour Person-Centered Care
- Highly trained, caring and attentive staff
- Daily stimulating entertainment and activities
- Home cooked, nutritional and appetizing meals
- Safe and secure environment
- Daily visits by District Nurses
- Regular visits by Chiropodist, Hairdresser, Dentists, Opticians and GP's
- Beautiful personalized en-suite bedrooms
- Respite and Long-term Care

**Ermington House, Ermington Nr Ivybridge, Devon PL21 0LQ**  
Email: [enquiries@garad-carehomes.co.uk](mailto:enquiries@garad-carehomes.co.uk) | Tel: 01548 830076  
**[www.ermington-house.co.uk](http://www.ermington-house.co.uk)**



## Margaret Barnett



There will be a memorial service in St George's Church, Modbury, for Margaret Barnett, a much loved and long-time Modbury resident, in early November. Details will be published in the Modbury Post Office window.

Margaret was, for many years, part of the Modbury Messenger delivery team, delivering to her neighbours in Benedict Way and the Priory. She will be missed by many people and I had many lovely conversations with her about her interesting life and travels.

**Lynne Barnes**  
Editor, Modbury Messenger



**MODBURY**  
**MEMORIAL HALL**  
Back Street, Modbury, PL21 0RF  
Information Hotline: 07828 289269

Advance Tickets £20.00  
from: Modbury Post Office  
14 BROAD STREET PL21 0PU  
or WeGotTickets.com



## INTENDED MONTHLY FLAG HOIST AT PALM CROSS GREEN - October

Date	Masthead	Starboard Yard (Plymouth) - West	Port Yard (Modbury) - East	Event
04	Army Flag	LA1 <sup>st</sup> subMEN	1942Ans	End of El Alamein Battle 1942
07	Union Flag	SUEZ	1956Ans	End of the Suez Conflict 1956
09	RBL Flag	Poppy and others	Lest We Forget and others	Remembrance Sunday
11	RBL Flag	ARMIST	191 <sup>st</sup> sub8	Armistice Day 1918
14	Union flag - RC	HMKING	1948	HM King Birthday 1948
18	Army Flag	SOM3 <sup>rd</sup> subE	191 <sup>st</sup> sub6Ans	End of the Battle of the Somme 1916
30	Scot Lion Flag	St Andrew Cross	ANDREW	Scotland Patronal Saint



**Apr 2025/Mar 2026 Season**

Join your local tennis club and have access to the all-weather courts right on your doorstep 52 weeks a year.

Family Membership	£55.00 pa
Single Membership	£35.00 pa
Junior & Student Membership	£22.00 pa
Child (11 yrs & under)	£ 6.00 pa

- Coaching available for all age groups.
- Friendly Club Sessions Thursday afternoons & Sunday mornings (free to members).
- or just play whenever you wish to.

Full details:  
[www.clubspark.lta.org.uk/ModburyTennisClub](http://www.clubspark.lta.org.uk/ModburyTennisClub)  
[info@modburytennisclub.uk](mailto:info@modburytennisclub.uk)  
Chairman 07968 777141

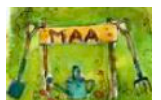
## Allotments in Modbury

Modbury has two sites, one on Palm Cross and one on Church Lane.

If you are interested in taking up an allotment contact the Parish Office:

Tel: 07467 134225

email: [parishclerk@modburyparishcouncil.gov.uk](mailto:parishclerk@modburyparishcouncil.gov.uk)



**Jane Bullen**



## COMMERCIAL ADVERTISING RATES MODBURY MESSENGER 2025

SIZE	Size - can be portrait or landscape	1 month (per insertion)	3-11 months (per insertion)	12 months (per insertion)	12 months (Year total)
1/8 page	45mm x 65mm	£30	£26	£16	£192
1/4 page	90mm x 130mm	£60	£50	£30	£360
1/2 page	130mm x 180mm	£108	£86	£50	£600
1 page	180mm x 250mm	£192	£148	£80	£960

The Modbury Messenger is an all colour publication, no preferential rates for black & white advertisements.

To advertise in the Modbury Messenger, contact the Editor, Lynne Barnes, via email on [modburymessengercic@gmail.com](mailto:modburymessengercic@gmail.com) with details of the size of the advert and how many months you wish to advertise for.

### Modbury Messenger December 2025

The copy date for the December 2025 Modbury Messenger is **10th November**. Please email all articles, notices of events and paid advertisements to [modburymessengercic@gmail.com](mailto:modburymessengercic@gmail.com).

The Modbury Messenger is published by Modbury Messenger CIC and is printed by ESP Print. The views expressed in the Messenger do not necessarily represent those of Modbury Messenger CIC.

The Editorial Committee reserve the right to précis/abbreviate any copy submitted for inclusion in the Modbury Messenger. Their decision is final. The contents of the Modbury Messenger may not be reproduced in any form without the prior written permission of Modbury Messenger CIC. Guidance for submitting material is available online at <http://modburymessengercic.co.uk/about.html>

**Persons submitting entries with art or photographs not drawn or taken by themselves must confirm they have obtained copyright permission, or agree to pay any copyright fine which is subsequently raised**

[modburymessengercic@gmail.com](mailto:modburymessengercic@gmail.com)

### MODBURY MESSENGER CIC

Modbury Messenger CIC is a Community Interest Company and as such is registered by the Registrar of Companies for England & Wales, Northern Ireland or Scotland. A Community Interest Company is a special type of not-for-profit limited company which exists to benefit the community. The purpose of Modbury Messenger CIC is to disseminate information about events, notices and articles of interest to the people of Modbury and it does this by publishing the Modbury Messenger, a printed newsletter, every month with 1000 copies delivered to homes and businesses within the Parish of Modbury. An online copy of the Modbury Messenger is available to neighbouring communities, advertised via social media and on our website [modburymessengercic.co.uk](http://modburymessengercic.co.uk).

Advertisers are charged a fee for advertising in the Modbury Messenger and this covers the cost of producing the Modbury Messenger. The Board of Directors, Company Secretary, Editor, Proofreaders and Distributors are all volunteers.

**Directors of Modbury Messenger CIC:** Diana Lynne Barnes & Bernard Taylor.

**Company Secretary:** George Rosevear FCIS.

**Editorial Committee:** John Bower, Lynne Barnes, Ira Young.

Modbury Messenger CIC has produced the Modbury Messenger as an independent CIC since September 2018. Previously, it was published by Modbury Parish Council.

# THE FLOOR SHOW



Your Local South Hams  
**Carpet & Vinyl Flooring Experts**

7 Church Street, Modbury,  
Devon. PL21 0QW

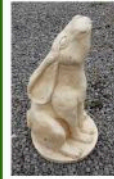
**01548 830909**

[thefloorshowmodbury@gmail.com](mailto:thefloorshowmodbury@gmail.com)

[www.thefloorshowmodbury.co.uk](http://www.thefloorshowmodbury.co.uk)

## GREENLANDS NURSERY

Higher Wizaller, Modbury, PL21 0SE



**Shrubs and Perennials**  
**Godwins Professional**  
**Peat Free Compost**  
**Planted hanging baskets**  
Deliveries can be arranged



**Local family run business excellent value**

Tel: 01548 550491 or 07534 611587

Email [brendagreenlandsmodbury@yahoo.com](mailto:brendagreenlandsmodbury@yahoo.com)

We also have a good selection of marble based garden ornaments

- Bathroom and kitchen fitting
- Floor and wall tiling
- Leaking toilets/radiators/taps etc
- Radiator replacement and additions
- Shower pumps
- Links with local builder/electrician for larger installations if required

## Chapman & Sons Plumbing Service



**Small jobs welcome**  
**Reasonable rates**  
**Free quotes**

**Telephone 07468 466380 now**  
**for a speedy and efficient service.**

  
**MARCHAND PETIT**  
COASTAL, TOWN & COUNTRY

**For customers who expect more  
from their estate agents.**

Our Modbury team has a wealth of South Devon Estate Agency experience, covering the coast and countryside. Whether you're looking to buy or sell, contact our friendly and knowledgeable team today.

**SALES | LETTINGS | AUCTIONS, CGT, IHT &  
PROBATE VALUATION**



01548 831163 | [modbury@marchandpetit.co.uk](mailto:modbury@marchandpetit.co.uk)  
4 Broad St, Modbury, Ivybridge PL21 0PS  
[www.marchandpetit.co.uk](http://www.marchandpetit.co.uk)



HELEN MOORE  
PROPERTY

POWERED BY  
**exp** UK

Independent Estate Agents

Over 100 years combined  
experience

Local. Approachable. Honest.

 01752 962162



MODBURY  
DENTAL PRACTICE

## OUR SERVICES

- Cosmetic Dentistry
- Dental Implants
- Restorative Dentistry
- Hygiene Services
- Orthodontic Aligners
- Same Day Emergencies
- Root Canal Treatment
- Extractions
- Dentures
- Tooth Whitening
- Facial Aesthetics
- Membership Plans

## MODBURY DENTAL PRACTICE

*Tailored dental treatments for the entire family*

### Practice Plans

Our plans allow you to spread the cost of your dental exams and hygienist visits into monthly payments.

### Finance Options

We offer a 0% APR finance so you can spread the cost of your dental treatments in affordable payments.

## NEW PATIENTS WELCOME

4 Broad St, Modbury, Ivybridge PL21 0PS

Tel no: 01548 830811

Mon-Fri | Private appointments only

[www.modburydentalpractice.com](http://www.modburydentalpractice.com)