



# MODBURY MESSENGER



illustration - Caroline Barker

For the People of Modbury & Brownston

Volume 24, Issue 307 - October 2024

## STATEMENT

### Bloor Homes - Palm Cross Consultation on New Homes

South Hams District Council and Modbury Parish Council would like to clarify that the site recently identified by Bloor for the potential development of new homes in the town is not an allocated site in the Joint Local Plan, is not part of Modbury Community's Neighbourhood Plan and is outside the settlement boundary for Modbury.

Modbury Parish Council and SHDC Councillor Bernard Taylor will be meeting with Bloor on Tuesday 17th September to receive a presentation regarding their proposals. No Councillors will be passing comments until a formal consultation commences.

News of the proposed public consultation was received by us on 10th September at the same time as confirmation of our meeting with them.

12<sup>th</sup> September 2024



# MODBURY PARISH COUNCIL

Modbury Parish Council

### Parish Clerk – Retirement

Our Parish Clerk, Sally Smale, will be retiring on the 13th December 2024. Sally has been a real asset to the work of the Council and I would like to take this opportunity on behalf of both past and present Councillors to thank her for all of her wisdom, support, experience and skill in making a sometimes challenging role a lot easier. We wish her well in her future adventures.

We will be recruiting for the post of Parish Clerk and an advert for this is on p7 of the October Messenger

**Barbara Price**  
Chair, Modbury Parish Council

**Fitness studio & 24/7 Gym**



**BOMBERS**  
PHYSICAL TRAINING

Unit A  
Pearse Gardens  
Modbury  
PL21 0FX

★★★★★  
Over 100 5 star reviews

Contact us to book  
your 'No Sweat Intro'



[www.bomberspt.co.uk](http://www.bomberspt.co.uk) [gym@bomberspt.co.uk](mailto:gym@bomberspt.co.uk)



GEORGE H.W. ROSEVEAR  
& COMPANY  
A DIVISION OF HOLBROOK ASSOCIATES

ACCOUNTANCY, TAXATION AND  
COMPANY SECRETARIAL SERVICES

01548 831427

3 MODBURY COURT, 32 CHURCH ST.,  
MODBURY, DEVON, PL21 0QR  
george@holbrookass.com

### Tall Orders Landscaping

All aspects of gardening

- \*Hedge trimming / Tree work
- \*Grass cutting - Lawns to Paddocks
- \*Fencing / Turfing / Stump grinding
- \*Weed control / Lawn Scarifying

### Logs Supplied

- \*Locally sourced hardwood
  - \*Delivered in dumpy bags / nets
- Tel . 01548 831139 / 07967258318



Modbury taxi



Contact  
Tel : 07455393693

### Modbury Private Hire Taxi

Pre booking is required for all local and longer distance journeys. This includes daytime, evening and airport transfers. Prices are agreed on booking.

Please don't hesitate to contact us if you have any questions.

07455393693

### MICHAEL R HAGGER

#### Professional Painter & Decorator

City & Guilds Advanced Craft trained

Over 40 years decorating  
experience, with the last 26 years  
in the wonderful South Hams.

Fully Insured



For a friendly,  
no obligation  
estimate or  
reference

Tel: 07977445521

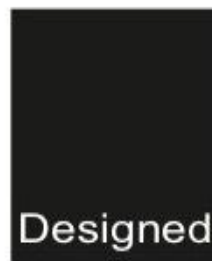


South Hams  
Wills & Probate

*Your local cost-effective  
alternative to solicitors*

- Wills -
- Probate -
- Lasting Powers of Attorney -
- Inheritance Tax Planning -
- Trusts -

Call Vanessa (Chartered Accountant)  
on 01548 858806  
mail@southhamswills.co.uk  
www.southhamswills.co.uk



Designed Space  
Ltd

Architectural Drawings  
and  
Planning Applications

Contact Alayne Harris B.I.D.  
0755 191 0874  
info@designedspace.co.uk

Based in Modbury



Sarah Wyatt

Independent Civil Celebrant

Weddings, Namings, Vow Renewals,  
Funerals – Celebration of Life

MAKING MEMORIES WITH BEAUTIFUL CEREMONIES

Tel: 07794662903 Email: circlecelebrantsarah@gmail.com

www.circlecelebrancy.co.uk



Coastal  
Garden Services

Tree Surgery & Landscape Management

Contact: Andy Walker on 07793 056898

Working in the South Hams for over 10 years

Fully insured to £5million

NPTC & RHS qualified



# MODBURY COMMUNITY APPLE DAY

**SATURDAY OCTOBER 12<sup>TH</sup> MODBURY THERAPY CENTRE YARD 10:00am**

Autumn has arrived and it's time to harvest and press our crop of apples from Modbury's community orchards so we can bottle or freeze the juice for use at future community events. You can also take away our delicious, freshly-pressed juice for a donation.

**Join in and help with the pressing:** Modbury has played its part in the revival of traditional community orchards in Devon and you can be part of that by helping with the pressing. It's rewarding to take our own apples, wash them, put them in the hopper for scratting (chopping), before pressing the chopped apples and seeing the golden juice flow. After that it's time to bottle and pasteurise the juice so it keeps longer. Unpasteurised juice needs to be consumed within just a few days.

**Volunteer helpers needed:** This traditional pressing method, although not very physically taxing, is quite labour intensive as we need to get a bit of a production line going. So, we are always looking for people who are willing to taking a turn in the team. No previous experience necessary. Contact me at [cwhybrow@btconnect.com](mailto:cwhybrow@btconnect.com) if you can spare a couple of hours to help.

We are always particularly pleased to welcome children to Apple Day and often involve them in harvesting the apples the day before and in some aspects of the pressing. Seeing how the juice they are used to seeing on a supermarket shelf was produced is a great way for them to connect our food to nature; and tasting the juice you pressed yourself is something extra special. Experienced adults are on hand to explain and supervise this age-old process.

**Recycle your glass and plastic bottles by donating them to Apple Day:** We need clean glass and plastic bottles **with screw caps** please. We have to soak and remove the labels before the bottles are sterilised, so we need them about a week before Apple Day on 12<sup>th</sup> October to give us time to prepare them.

We are happy to collect bottles, just drop an email to [cwhybrow@btconnect.com](mailto:cwhybrow@btconnect.com) and we'll arrange to pick them up.

**You can donate your own apples too:** Predictions from apple growers are for a good harvest this year, with some crops expecting larger-than-usual apples due to the mild spring. Our own community orchards' crop looks better than last year, but not record-breaking. If you are wondering what to do with surplus apples on your own trees, why not bring them along to Apple Day and donate them for the community pressing.

Let's hope for another dry and enjoyable day at the Modbury Therapy Yard. Access is through the blue door to the left of the Curator Café. **Saturday October 12<sup>th</sup> 10:00 onwards.**

**Colin Whybrow**

*The blue door  
opens into the  
yard and the  
Apple Day  
pressing.*

*modburytherapy  
centre.co.uk*



# Modbury Parish Council (MPC) Meeting Tuesday 3<sup>rd</sup> Sept 2024



Present were seven councillors, Bernard Taylor (BT of South Hams DC), and 3 members of the public. Apologies were received from Cllr Barbara Price who was unwell.

## Public Forum

A member of the public raised concerns regarding an Environmental Impact Assessment from Bloor Homes for further development to the north of their existing development. Cllr Turner explained that this was a very preliminary enquiry concerning environmental impact and a long way from a planning application and is also outside the scope of all current local plans; the Joint Local Plan is due for review in 2025, as is Modbury's Neighbourhood Plan.

## Devon County Council Report by Rufus Gilbert (written as he was not present)

- Rufus apologised for delays on the repainting of the pedestrian crossing and is chasing as a priority.
- £1000 has been granted towards the Modbury Heritage Trail public boards.

## Matters arising from the minutes of the meeting 6<sup>th</sup> August 2024

- SW Water works are still expected to start on 16<sup>th</sup> September.
- A letter will shortly be despatched by MPC to the landowner re slippage onto the road at Sheephams which is, as yet, unresolved.
- Orcheston flooding issues: MPC has had a meeting with the landowner and residents. The situation and potential solutions are complicated. Our new MP, Caroline Voaden, will attend a site meeting later in September. MPC has pressed Highways to protect the road boundary pending further action by other agencies.
- Tree works on Barrack Road – SHDC have agreed to pay for the work to be done.
- Grass verges on the New Mills industrial estate have now been cut.
- The two damaged Millennium Meadow benches have been speedily replaced by SHDC, assisted by intervention from Bernard Taylor.

## Planning

- The minutes from the last committee meeting were received. These included discussion of the planning application for the field at Trehele Cross for work on vehicle access and tracks. The committee was very concerned with mistakes in the application, the need for such major work with no permission for associated development, and the apparently non-mobile nature of the current structures. It was proposed that the Council objects to this application.
- Further consideration has been given to the Penn Parks housing development, permission for which was rejected. The developer, Baker Estates, have appealed, such appeal to be heard on 3<sup>rd</sup> December. MPC's position remains opposed and will be represented at the appeal by Cllr Ann Turner.
- There is a new National Planning Policy Framework and councillors will respond to the consultation by NALC.

## Maintenance Update

- There was a recent online training event with DCC on highway schemes attended by Cllr Phil Smith. He reports that there is a genuine attempt on behalf of DCC to reset relations with local councils, but lack of funding is an issue.
- Safer access to the QEII Recreation ground is an issue; DCC would approve and adopt lighting but will not fund it, which would have to be done by MPC, which is obtaining quotations.
- P3: DCC have undertaken the improvements on Footpath 3 to Brownston. This involved the installation on gates not stiles, but the far, eastern end still needs attention. We do however need more volunteer support.
- There have been complaints about the lateness of the recent grass cut and the cuttings left. Our contractors will resolve this shortly with a more efficient cut and removal of cuttings, as well as a special 'scissor cut' of the Millennium Meadow and community orchard.
- MODWAG have weeded and mulched around the new hedge at Palm Cross.

## Allotments

- The local anonymous purchaser of the Church Lane allotments is continuing to pursue their interest.
- There was discussion of the lease agreement with the Palm Cross allotments which needs to take into consideration dedicated parking spaces and other issues.

## Sustainability update

Work has been done in the Churchyard, native hedge planting is planned. MODWAG will be organising autumn and spring events, and there will be a working group meeting this month.

## Modbury Association of Recreation and Sports

The Governance Document for the proposed Modbury Recreation Trust and the Terms of Reference for the Management Committee were agreed.

**Date of next meeting: Tuesday 8<sup>th</sup> October (NB: 2<sup>nd</sup> Tuesday of the month)**

**Tony Price**



## CELEBRATING 30 YEARS IN MODBURY

To celebrate more than 30 years of being in business in Modbury, the salon team decided a rebranding was a good idea. A revamp of parts of the salon and a redesign of the front of the shop were also carried out.

The salon is located in London House, a Victorian building in the centre of Modbury with high ceilings and modern but relaxing lighting. The comfortable, spacious salon benefits from air conditioning for the comfort of clients and the salon team.

The salon's reputation is built on first class training for all staff, particularly in colour and cutting, with regular in-salon training sessions from Goldwell, KMS technicians and senior team members. Junior stylist, Letti, attends College in Plymouth as well as receiving training in the salon.

The professional, fashion-conscious team enjoy all aspects of hairdressing, especially cutting and colouring and have access to beauty technicians to complement their work. Born and brought up in London, Nick, the salon owner and Director, trained at the London College of Fashion and worked in the West End, then travelled and worked abroad before moving to Devon where he opened three salons. He has successfully run Nicholas Hair for the past thirty years and remains involved in overall management, training and support. As part of the training ethos, the team have been successfully involved with competition work nationally and have been members of the prestigious Intercoiffure and Fellowship of Hair Artists of Great Britain organisations, showcasing their work in London and throughout the country. One of the salon's senior stylists, Lauren Goves, was a finalist in the Fellowship competitions, competing on stage at the Excel Centre in London. The salon ethos is simple: *'Professional consultation, courtesy and care'*.

The Salon offers a wide range of professional products with advice on home hair care and maintenance. They have an 'Introduce a Friend' and a 'Loyalty Card' scheme. New clients are always welcome, by appointment, for a free consultation with a member of the salon team to discuss new ideas for their hair. The salon is open from Wednesdays to Saturdays from 9am to 6pm

Good coffee, tea, soft drinks and a smile always available.

**Nick Grodhunce**



## ST MONICA'S RC CHURCH - MUSIC



As reported in the May edition of the Modbury Messenger, a special presentation was made to St Monica's RC Church when David Scott organised a collection from the 8am congregation of St Georges' Church, bought a framed print of the Last Supper by Leonardo de Vinci and this was presented to Father Victor on Wednesday 10 April together with a gift aided cheque for £250, with much grateful thanks for their neighbourly generosity during the Amazing Spaces project.

David Scott also learned that although St Monica's RC Church has an organ, there is no organist, so he ordered a Hymnal Machine (Hymnal Plus 400), which is able to play over 3,000 hymns as well as incidental introductory music. A further presentation was made on Wednesday 21 August to Father Victor, who was extremely grateful for an unexpected but much

appreciated gift, enabling the congregation to have music during future services.

**David Scott**

## MODBURY MAY FAIR

After the success of this year's May Fair, we are now looking forward to next year's event. We want to continue the innovative events of the Ceilidh and community picnic/sports, as well as the traditional ones which are so inclusive of all, but we do need more help from the Modbury community to spread the load. If you think that you can contribute in some way next year, whether just to help out on the day or in advance in helping to organise some part of the fun, please contact Pip Ainsworth on [pipainsworth@btinternet.com](mailto:pipainsworth@btinternet.com).

We are still seeking a theme for May Fair 2025, so if you have an idea, especially if it really works with the carnival procession (as with 2024's splendid Olympic theme) feel free to drop us a line.

### **The Modbury May Fair Committee**

The team at the Modbury Messenger would like to thank the May Fair Committee and Modbury Parish Council for their kind donations towards buying a new laptop computer that enables us to continue producing the Modbury Messenger for the benefit of the Parish of Modbury.



# THE SOUTH HAMS COMMUNITY ORCHESTRA



[shco.co.uk](http://shco.co.uk)



## Music of the British Isles

<b>Benjamin Britten:</b>	<b>Five Courtly Dances</b>
<b>Arthur Sullivan:</b>	<b><i>The Mikado</i> Overture</b>
<b>Jeremiah Clark:</b>	<b>Suite</b>
<b>William Alwyn:</b>	<b>Scottish Dances</b>
<b>Patrick Bouchon:</b>	<b>An Irish Medley</b>
<b>Mary Moody:</b>	<b>Concert Overture in C</b>
<b>Randall Williams:</b>	<b>Ivybridge Rag</b>

**Conductor: Ian Hiscock**  
**Leader: Janna Bulmer**

**Saturday 12<sup>th</sup> October 2:30pm**

**St George's Church, Modbury**

**PL21 0QN      Free entry**

**Collection in aid of church funds**

 **Luscombe Maye**  
Since 1873

## **The Luscombe Maye Advantage**

To find out how much your home is worth,  
please call or email Eleanor, Sara or John in  
the Modbury office.

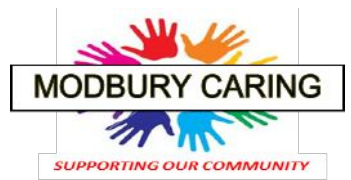
For more information contact  
[modbury@luscombemaye.com](mailto:modbury@luscombemaye.com) or  
call 01548 830831

[luscombemaye.com](http://luscombemaye.com)  [luscombe maye](https://www.facebook.com/luscombe_maye)  [luscombe\\_maye](https://www.instagram.com/luscombe_maye)



# Hello Modbury Caring Friends and Supporters

We are delighted to invite you to our Charity Fundraising **BINGO** event on **Friday 11th October 2024**, at **Moreleigh Village Hall**, TQ9 7JQ. Please arrive by 7:00pm; "Eyes Down" will be at 7:30 pm sharp.



Enjoy an evening of Bingo fun and prize draws! Cake, sandwiches, tea, and coffee at the interval! We look forward to your support and participation. Prize donations or, indeed, a cake for the evening would be gratefully accepted – please contact Bill Cole.

Please also join us in showing our heartfelt appreciation for our wonderful Befriending Coordinator, Sheila Harrison. Sheila is embarking on a well-deserved retirement, filled with adventures to exotic places and cherished moments with family. Thank you, Sheila, for 10 years of unwavering dedication and friendship, especially for keeping our service alive through the toughest times. Have a fantastic retirement!

A huge thank you to Pip Ainsworth and the May Fair Committee whose remarkable fundraising efforts made it possible for us to now have a brand new, heavy-duty, Brother printer! You're truly a star, Pip! Your support means the world to us.

For Prize Donations or to volunteer as a Driver - Contact Bill Cole on 01548 830913 or Sue Rogers on 01548 831289. To volunteer as a Befriender - Contact Nicole Gardemann on 07554 997140. Also visit our website on <https://modburycaring.org.uk/>

Warm regards to you all

**Sue Rogers**



**MODBURY  
PARISH COUNCIL**

## **Modbury Parish Council**

### **Parish Clerk and Responsible Financial Officer (RFO)**

#### **Part-time 17 hrs per week**

Salary range £33,024 to £36,648 (pay award pending) pro-rata, 17 hrs per week (dependent on experience and qualifications).

Due to the planned retirement of our current Parish Clerk in December, Modbury Parish Council is seeking to appoint an individual for the role of Parish Clerk and Responsible Financial Officer (RFO). This is an exciting opportunity and would suit a community-minded individual who has the relevant experience to undertake an interesting and varied post within a small but active Parish Council.

Our Parish Clerk is pivotal to the operation of the Council providing essential administrative support and robust financial management. We are currently in year one of a comprehensive four year development strategy and are seeking to recruit someone with the appropriate skills and experience to help us to deliver our future plans.

The role requires someone with the confidence and interpersonal skills to deal with a wide range of individuals from the local and wider communities. Our Parish Clerk works closely with council members, County and District Councils, local organisations and residents.

The ideal candidate will have good verbal and written communication skills, be computer literate and also have the ability to work on their own initiative. Strong financial management and organisational skills are required, together with a positive outlook.

We can offer you a:

- Competitive salary
- A NEST Pension Scheme
- Opportunities for growth and training

Ideally the successful candidate will have a CilCA qualification. However, training will be considered where required.

This is an office based position with a requirement for some evening work to attend Council and Committee meetings.

To apply please forward your CV with a covering letter detailing how you meet the person specification as set out in the Job Description by 5pm on 18th October 2024. CVs and covering letter may be emailed to the Parish Clerk at: [parishclerk@modburyparishcouncil.gov.uk](mailto:parishclerk@modburyparishcouncil.gov.uk) or posted to Modbury Parish Council, Unit 1, 32 Church Street, PL21 0QR

For an application pack including job description, further information or for an informal discussion about the role, please contact our Parish Clerk: Sally Smale on 07814 849131.

Interviews will take place in the Parish Office on 31<sup>st</sup> October 2024.

## Modbury Christmas Craft Fair: Nov 30th-Dec 1st - Save the Date

The seventh Modbury Christmas Craft Fair will take place at the Modbury Memorial Hall on Saturday November 30th and Sunday December 1st. Doors open at 12 noon until 4:00 pm on both days. As in previous years, we have brilliant crafters who will be tempting you. We have different crafters on both days. A choice of almost 50 makers.

The range of crafts is very wide: knitted items (toys and garments), wool, glass decorations, really amazing pottery, jewellery, brilliant bags, children's books, fabulous baskets, exquisite paintings, magnificent cushions, fleeces, and so much more.

In the next few weeks we shall be putting out posters that will hopefully whet your appetite even more. So please come and support our local makers and do your Christmas shopping with a very low carbon footprint.

There will be tea and coffee, mince pies and cakes available.



### AUNE VALLEY IN MODBURY

6 Church Street, Modbury



Free Local Delivery\*

\*Terms & conditions apply.

Bring this with you to receive 10% off in the shop or cafe. Terms & Conditions Apply

[www.aunevalleymeat.co.uk](http://www.aunevalleymeat.co.uk)

**imakewebsites.**



NEED A NEW  
**WEBSITE?**  
**I CAN MAKE IT!**

Contact Vicky  
01548 831910  
[www.imakewebsites.co.uk](http://www.imakewebsites.co.uk)

## MODBURY PARISH COUNCIL

Modbury Parish Council Office, 1 Modbury Court, PL21 0QR 01548 312321 email [parishclerk@modburyparishcouncil.gov.uk](mailto:parishclerk@modburyparishcouncil.gov.uk)

### Your Councillors are:

Bill Cole	01548 830913
Richard Foss	01548 721420
Barbara Price (Chair)	07739752095
Tony Price	07801837129
Phil Smith (Vice Chair)	07759282404
Dave Trigger	07808742372
Ann Turner	01548830606
Sarah Wyatt	07794 662903

<a href="mailto:richardfoss@modburyparishcouncil.gov.uk">richardfoss@modburyparishcouncil.gov.uk</a>
<a href="mailto:barbaraprice@modburyparishcouncil.gov.uk">barbaraprice@modburyparishcouncil.gov.uk</a>
<a href="mailto:tonyprice@modburyparishcouncil.gov.uk">tonyprice@modburyparishcouncil.gov.uk</a>
<a href="mailto:philsmith@modburyparishcouncil.gov.uk">philsmith@modburyparishcouncil.gov.uk</a>
<a href="mailto:davetrigger@modburyparishcouncil.gov.uk">davetrigger@modburyparishcouncil.gov.uk</a>
<a href="mailto:annturner@modburyparishcouncil.gov.uk">annturner@modburyparishcouncil.gov.uk</a>
<a href="mailto:sarahwyatt@modburyparishcouncil.gov.uk">sarahwyatt@modburyparishcouncil.gov.uk</a>

**How can we help you?** Councillors run drop-in surgeries on Sat. 10–11am in the Parish Office at 1 Modbury Court. The Parish Clerk is in the Parish Council office on Tues, 10am – 4pm. Call into the office, phone, email or come along to our meetings at 7pm in the Pavilion, QEII Recreation Ground on the first Tuesday of every month and speak in the public forum.

### Devon County Councillor (Salcombe Division):

Rufus Gilbert Tel: 01548 856659  
[rufus.gilbert@devon.gov.uk](mailto:rufus.gilbert@devon.gov.uk)

### South Hams District Councillor Charterlands Ward:

Bernard Taylor Tel: 01548 830844  
[Cllr.Bernard.Taylor@southhams.gov.uk](mailto:Cllr.Bernard.Taylor@southhams.gov.uk)





# Modbury Mission Community

To know Jesus and make him known



## St George's Church, Modbury



**KIDS' CHURCH** - Kids' Church meet in Modbury Primary School. Parents, please drop off your Explorers (age 9+) and Discoverers (age 6-8) at the school from 9.15 am where they will be met by one of the leaders. Following Kids' Church, the youngsters will be taken back to St. George's to be with their parents at the end of the service. Climbers (age 0-5) will remain in St. George's, meeting their leader to be taken to the Lower Vestry. If you have any questions regarding Kids' Church please contact Sara Chapman on [s.chapman@modburyteam.org](mailto:s.chapman@modburyteam.org)

Rev. Matt Rowland

01548 830260

[matt.rowland@modburyteam.org](mailto:matt.rowland@modburyteam.org)

Date	Service	Service Leader
<b>October 6th</b>	Harvest Holy Communion and Kids' Church 9.30 am	Rev. Oli Long
<b>October 13th</b>	Holy Communion BCP 8.00 am	Rev. Matt Rowland
	All-Age Service 9.30 am	Rev. Oli Long and Helen Pickard
<b>October 20th</b>	Holy Communion and Kids' Church 9.30 am	Rev. Matt Rowland
		Rev. Oli Long and Helen Pickard
<b>October 27th</b>	Sunday Worship 9.30 am	Rev. Simon Franklin
	Rooted - A service of contemporary worship 6.00 pm	Rev. Matt Rowland

### CHRISTIAN COMMENT: Saying Your Prayers

He was an old man, the skipper of the little boat that plied between Wick and the Shetlands, and the young, smart group of actors and actresses who were going to play for a few days in the islands, thought him very quaint and old-fashioned. He even said grace before meals!

However, a storm blew up suddenly, and when the boat began to pitch violently, the theatre party sent a deputation up to the bridge. "Maybe we'll get through, and maybe we won't" was the reply. "I never remember such a storm".

Morale below deck grew lower and lower. Finally, a second delegation went up to the bridge, and this time they begged the captain to come down and say a prayer with his terrified passengers. His reply is significant.

"I say my prayers when it's calm", the old man said, "and when it's rough I attend to my ship".

*(Printed in the November 1968 issue of "Orbit", serving seven Anglican churches in France)*

### What a Difference Volunteers can Make

On Saturday 7<sup>th</sup> September over 20 volunteers gathered in St George's Churchyard and set to on a much needed Autumn tidy up. Hedges were trimmed, paths cleared of weeds, drains unblocked, brambles cut down and coffee and cake consumed. Wow, hasn't it made a difference. Thank you to everybody who gave up their Saturday morning and showed yet again what a great community Modbury has. A special thanks to James and Sam Tall for bringing their chipper which made a massive difference to what we were able to achieve.

Disappointed that you missed it? Well, never fear, we are going to do it all again on October 19<sup>th</sup>. So if you can spare a few hours on that Saturday morning then you would be most welcome and your help would be greatly appreciated. See the poster for more details, or contact Richard Taylor on 07799626134.

**Richard Taylor**

### St Monica's Roman Catholic Church, Modbury

Mass weekly at 5pm on Wednesday

### St Austin's Priory Roman Catholic Church, Cadleigh

Mass weekly at 11.30 am  
on Sunday



Phone: 01752 895888

E-mail: [ivybridge@prcdtr.org.uk](mailto:ivybridge@prcdtr.org.uk)

## HELP NEEDED

Can you spare some time on the morning of

**Saturday 19<sup>th</sup> October**

To join a Churchyard working party

At

**St George's Church**

Bring your own tools and gloves

(and family!)

Come along any time after 9.30am and give  
whatever time you have.

Refreshments provided



## FIONA'S FANCY FEET DANCE SCHOOL

### CLASSES IN MODBURY AND KINGSBRIDGE

Scan the QR code



CONTACT FIONA ON

07800883367

FIONASFANCYFEET@GMAIL.COM

WWW.FIONASFANCYFEET.ORG.UK



Send us details of your events  
happening in Modbury to  
[modburymessengercic@gmail.com](mailto:modburymessengercic@gmail.com).

No cost for non-commercial  
organisations.

## Palm Cross Residents' Group

As Bloor has now given over responsibility for the estate to First Port, it seems a good time to form a 'Residents' Group'. Everybody on the estate would be part of the group and all ideas would be welcome. A small committee will be responsible for meeting, discussing and acting on ideas put forward by the members of the group.

There is already a Bloor Facebook group, and communication between members and the committee would take place on this forum (at least in the first instance). If you are not part of the 'Bloor Homes Modbury' group, please consider joining so that you can see what is happening.

*Chris Field*

*Bridge is the best exercise for the brain (Warren Buffet)*

### BRIDGE LESSONS AND DUPLICATE CLUB SESSIONS

Absolute beginners and occasional players welcome

**Duplicate sessions designed for recent beginners and weaker players**

**Partners usually provided for duplicate play**

**Modbury QEII Recreation Ground  
MARS Pavilion PL21 0FS**

12.45 – 4.15pm every Thursday afternoon

Modern, warm venue with ample free parking. £2.50 per session

Email Rodney on: [nootig321@gmail.com](mailto:nootig321@gmail.com) for more information



**NOAH'S ARK**  
For 0-4 year olds

Wednesday Mornings  
Term Time 9.30-11.00 am

The QE11 Recreation Ground  
Chatwell Lane, PL21 0FS

Hot drinks • Home baked cakes • Baby weighing scales  
Songs • Musical instruments • Bible story • Craft  
Baking activity • Parachute games

Contact: [louise\\_rowland@hotmail.com](mailto:louise_rowland@hotmail.com) | 01548 830260



## Flat-Pack Furniture

Your flat-pack arrived  
at the door

But assembling it  
will be a chore

Just give Bob a ring

And he'll build the thing

Could you ask for  
anything more!

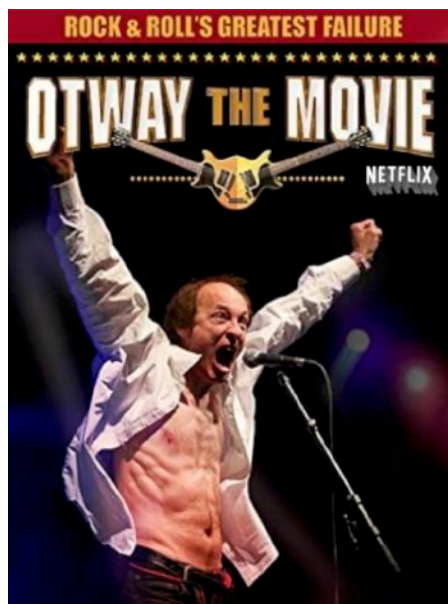


**Tel: Flat-Pack Bob  
on 07800 808076**



## Who are John Otway and Wild Willy Barrett and 'what' are they doing in Modbury?

John Otway's hilarious stage act draws heavily from old-time English vaudeville, best illustrated by his infamous appearance with Wild Willy Barrett on the BBC's legendary 'The Old Grey Whistle Test'. Steve Barker's fascinating Netflix documentary 'Otway the Movie: Rock and Roll's Greatest Failure' depicts Otway as a lovably inept one-hit wonder who can't resist taking a leap of faith and landing on the "fail" button every time. In his unique self-deprecating way, Otway muses "some people actually come to see me more than once". What becomes clear however, is that Otway is in fact a brilliant tunesmith, a perfectly adequate guitarist and also a devious yet utterly original creative genius.



The film documents how Otway led a write-in campaign resulting in the BBC listing his ridiculously absurdist psych-pop song 'Beware of the Flowers Cause I'm Sure They're Going to Get You' as one of the seven greatest lyrics ever written. The perfect foil for Otway is his occasional collaborator, multi-instrumentalist Wild Willy Barrett. His musical style has included everything from folk to punk rock, with his live performances punctuated by his dry humour and onstage wit.

The local team behind this event are keen to keep the promotion within Modbury with plans to establish the town as a new destination for professional entertainers.

Event: **Friday 8th November Modbury Memorial Hall**  
Tickets: **£20 (cash only) The Modbury Inn**  
Online sales: **[www.WeGotTickets.com](http://www.WeGotTickets.com)**  
Inquiries: **07828 289269**



**Rob Giles**

15 MINUTE INITIAL CONSULTATION: **FREE**

1 HOUR TREATMENT: **£50**

**BOOK YOUR SESSION TODAY!**

## Reflexology with Nicolle

**Reflexology may:**

- Provide profound relaxation
- Strengthen immune system
- Discharge toxins and improve general well-being
- Relieve muscle aches naturally
- Improve circulation throughout the body
- Help relieve fatigue and sleepless nights

**Nicolle McKenzie**  
Reflexologist-level 3 diploma  
Telephone -**07551256650**  
Instagram- [reflexologywithnicolle.co.uk](http://reflexologywithnicolle.co.uk)  
Email -[reflexologywithnicolle@gmail.com](mailto:reflexologywithnicolle@gmail.com)  
Facebook -[reflexologywithnicollemckenzie](http://reflexologywithnicollemckenzie)

**Modbury Therapy Centre**  
35 Church Street, Modbury, Devon  
PL21 0QR

## Distinctive World Travel and Modbury Therapy Centre



Any of us who knew Annabelle's Bistro 35 would be hard pushed to recognise this same building on Church Street now. Two years ago, Steve and Mandy Hyde bought the building from Annabelle and set about converting it. Initially the ground floor was taken on by The Little Kitchen, but this really never worked, so The Curator took it over and remodelled it as a full time coffee bar plus a weekly wine, and a monthly supper club evening. Meanwhile Steve and Mandy got going on the rest of this large building, which has been open for some time now, as a Tour Operator and Therapy Centre. I called in to see Steve and Mandy to find out more about this ambitious venture.

I was given a tour of the premises and I have to say they are most impressive. Totally refurbished in a pleasing and modern style and very colourful in a peaceful way, the upstairs is surprisingly

spacious. Steve has the one large room for the travel business, but Mandy, who runs the Therapy Centre, hosts five therapy rooms and a yoga barn.

Steve runs the specialist Tour Operator concentrating on South and Central America and Africa. Before moving to Modbury in 2019, he had been running this business from Gloucestershire, but with no trading for two years during the pandemic, decided to move to Devon. He has 7 experienced staff members, all on line and mostly in the Gloucestershire area, and the main emphasis is on tailor-made holidays for individuals or families. His Unique Selling Point, he told me, is the combination of his 18 years of experience, knowledge, and personable approach. Steve mainly sells holidays through independent travel agents, but in Modbury, directly to the public here. Indeed a local friend of mine has just booked a trip to Peru with him. Steve himself has visited 129 countries and says there is nothing they sell that they haven't experienced themselves!

The business has two excellent brochures, one covering Central and South America, Antarctica and Galapagos, and the other Africa. I asked which was the most popular destination and apparently it's Costa Rica - very peaceful, fabulous bird and wildlife in general, and no military problems.

After a cuppa, Mandy took over and showed me her Therapy Centre. This comprises of five therapy rooms and the yoga barn which she hires out to qualified therapists, but retains one room for her special interest and expertise - homeopathy. Having been initially involved in TV production, she decided to train in homeopathy and complementary medicine at The College of Homeopathy, and their move to Modbury enabled her to open her own clinic here. Most consultations are for an hour with follow up appointments slightly shorter, and the tailor-made prescriptions are posted on after the consultations.

The other four therapy rooms are hired and used by various therapists for Acupuncture, Reflexology, Massage Therapy, and Cognitive Behavioural Therapy, or to talk to a Counsellor or Psychotherapist. In the Yoga barn, there's a monthly Gong and Sound bath session, using the beautiful sounds of hand pan, drum, chimes and singing bowls which can be enjoyed by both children and adults. In the spacious Yoga Barn that used to be Annabelle's art studio, yoga sessions are held daily except weekends, with various teachers,

Finally we walked in the large and peaceful walled garden, which is available for customers of the Centre to use and just relax. I left feeling this is a perfect place to visit and talk with a Counsellor over problems that are worrying you - hence Mandy calls some of the rooms 'Talking Therapy Rooms'.

Contacts:

Distinctive Travel [steve@distinctiveamericas.com](mailto:steve@distinctiveamericas.com)

Modbury Therapy Centre [enquiries@modburytherapycentre.co.uk](mailto:enquiries@modburytherapycentre.co.uk)







*Tailor-made* **travel  
arrangements to  
Africa and Latin  
America.**

35 Church Street, Modbury • 01548 858 272  
[sales@distinctiveamericas.com](mailto:sales@distinctiveamericas.com)  
[www.distinctiveamericas.com](http://www.distinctiveamericas.com)

**DISTINCTIVE  
AFRICA**



**DISTINCTIVE  
AMERICAS**



## **Modbury Therapy Centre** *Health and Wellbeing Centre*

### **Offering Complementary Therapies**

Acupuncture, Reflexology, Massage Therapy, Homeopathy, Counselling,  
 Psychotherapy, Nutritional Therapy, Yoga, Pilates, Meditation,  
 Cognitive Behavioural Therapy, EFT, Life Coaching, Sound Healing

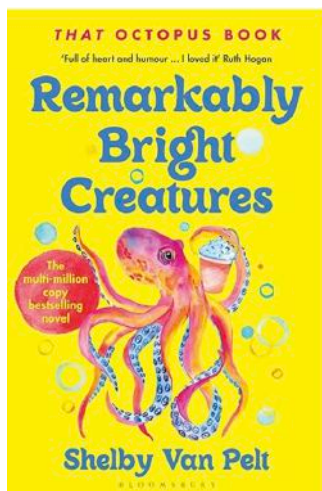
[www.modburytherapycentre.co.uk](http://www.modburytherapycentre.co.uk)  
[enquiries@modburytherapycentre.co.uk](mailto:enquiries@modburytherapycentre.co.uk)  
**07973 367517**



To advertise your business in the Modbury Messenger, please contact us at  
[modburymessengercic@gmail.com](mailto:modburymessengercic@gmail.com)  
[www.modburymessengercic.co.uk](http://www.modburymessengercic.co.uk)



## Book Club Recommendations



This month's first recommendation is from the BBC...better known as the Brownston (Street) Book Club. This club formed three or so years ago and meets every six weeks. Each member chooses a book and then hosts the meeting at which it is discussed.

At our last meeting, we decided to recommend "Remarkably Bright Creatures" by Shelby Van Pelt. It is a novel that explores friendship, reckoning and hope. It delves into the past to uncover a future that once felt impossible. The story follows a widow's unlikely connection with a giant Pacific octopus!

It is not a long book, it is an examination of how loneliness can be transformed with the slightest interaction from another living thing.

**Ira Young**

*There are several book clubs in Modbury and all are welcome to submit a recommended read to the Messenger [modburymessengercic@gmail.com](mailto:modburymessengercic@gmail.com).*



**Modbury Players' next Pantomime is ....**

**'Rapunzel ... and Friends!' on 23, 24 & 25 January 2025**

Rehearsals will take place on Saturdays and Sundays in October, November, December & January. There will be a role for everyone who is interested! Come along to find out about it all and sign up to be part of this fabulous show. You are welcome to attend the meetings below on

**Saturday 5<sup>th</sup> October:**

**Open Meeting 11am to 1pm upstairs at the White Hart Hotel**

There are roles for children and adults. Roles will be onstage or behind the scenes - everybody is welcome

**On Sunday 6<sup>th</sup> October**

**Workshops 2 to 5pm at the Memorial Hall**

Exciting workshops for adults and children. Come along and take part – join in and find out about. Singing, Dancing, Acting, Stage/ Scene Painting and also dress up in some of our fabulous costumes. Learn about sound mixing and the technical stuff. Learn about all the work that goes into producing our fabulous shows.

- Bathroom and kitchen fitting
- Floor and wall tiling
- Leaking toilets/radiators/taps etc
- Radiator replacement and additions
- Shower pumps
- Links with local builder/electrician for larger installations if required

**Chapman & Sons Plumbing Service**

Small jobs welcome  
Reasonable rates  
Free quotes  
Telephone 07468 466380 now  
for a speedy and efficient service.

**GREENLANDS NURSERY**

**Higher Wizaller, Modbury, PL21 0SE**

**Shrubs and Perennials**



**Jack's Magic Compost**  
Deliveries can be arranged

**Local family run business excellent value**  
Tel: 01548 550491 or 07534 611587  
Email [brendagreenlandsmodbury@yahoo.com](mailto:brendagreenlandsmodbury@yahoo.com)  
We also have a good selection of marble based garden ornaments





## An Apothecral Tail

### Autumnus



This rather striking plant growing in St George's graveyard is **Great Mullein** (*Verbascum thapsus*). The word *Verbascum* is a corruption of the Latin *barbascum* meaning with beard. The word *thapsus* was first used by the Greek philosopher Theophrastus (371 to 287 BC) to describe an unspecified herb from the Ancient Greek settlement of Thapsos, Sicily. Mullein is possibly a word for yellow or a corruption of the Latin word *mollis* meaning soft with reference to its large velvety leaves. On this account it has been called "Andrex Plant" and in parts of America "cowboy's toilet paper".

Each plant can produce up to 240,000 seeds which are dropped within a metre or so. While the plant does not compete well with other plants, the seeds can remain viable for up to 100 years. Plants therefore commonly appear on newly disturbed soil.

Mullein contains a number of medicinally active phytochemicals and has a long history of use in herbal medicine though not adopted in contemporary medicine. Dioscorides recommended it to treat lung diseases 2,000 years ago. Plant parts including oil from the flowers has been used to treat a variety of conditions including catarrh, colic, earache, frostbite, eczema, warts, boils, haemorrhoids and chilblains.

The seeds contain several compounds that are toxic to fish but not humans. For this reason it has been widely used in fishing to poison fish.

*Verbascum thapsus* belongs to the plant family Scrophulariaceae. Another member of this family commonly seen around Modbury is the common figwort (*Scrophularia nodosa*). Now there's another story!.

*Fiat cum secundem artem*

Edward Holt



## Modbury Tiddlers Playgroup

### Come and say hello!

For families with children 0-4 years

---

**Fridays – 9.15-11.15 at Modbury Memorial Hall**  
Last Friday of the month – out and about day  
Term time only

---

Sensory play, crafts and a dedicated baby area  
Dress up, ride ons, toys and more!  
Refreshments provided for adults and a healthy  
snack provided for children






Find us on facebook and instagram for up to date info each week

 Modbury Tiddlers  @modbury\_tiddlers  
mail@modburytiddlers.org.uk

## Moorish architecture: The legacy of a vanished kingdom

*Ian Cockburn*





**October 23<sup>rd</sup> 2024**  
**2 for 2.30pm**

**The Methodist Church,  
100, Fore Street, Kingsbridge, TQ71AW**

**Visitors welcome - £10 donation**

**Charity number 1158965**

# MODBURY CLUB

31 Church St, Modbury  
01548 830991

Come and enjoy a game of

Darts - Snooker - Euchre

"Even a Pint or Two"

New Members Always Welcome

Open Mon-Sat 4pm Sun 1pm



## FUTURECLIENT

CREATIVE DESIGN AGENCY

We provide local businesses and clients with digital, online and promotional products and services.



OUR WORK



- WEBSITES
- ECOMMERCE
- DESIGN
- PRINT
- SIGNWRITING
- CLOTHING

01548 853214

[www.futureclient.uk](http://www.futureclient.uk)



## Walkaball

Walking Football  
Ladies & Gents welcome



Modbury Recreation Ground (PL21 0FS)

Thursday 18:30 - 19:30

Fun, Fitness and Friendship

To book your place email [walkaball@yahoo.com](mailto:walkaball@yahoo.com) or

Contact Steve on 07871 310987



## THE FLOOR SHOW



Your Local South Hams  
Carpet & Vinyl Flooring Experts

7 Church Street, Modbury,  
Devon. PL21 0QW

01548 830909

[thefloorshowmodbury@gmail.com](mailto:thefloorshowmodbury@gmail.com)

[www.thefloorshowmodbury.co.uk](http://www.thefloorshowmodbury.co.uk)





## Modbury History Society

but you are most welcome to come along to a talk if you are not a member for a fee of £5.

The next meeting will be held at 7.30pm on Monday, 14<sup>th</sup> October when Michael Bennie will talk about **'Dartmoor's ancient tracks and their stories'**.

Please visit the Modbury Heritage website where, amongst many other things, there are old photographs of Modbury as well as local scenes from postcards. The History of Modbury booklet is available to purchase a copy at our meetings.

The Time Team films of the 3-day dig, which took place in Modbury in June 2023, are now available to view without charge on YouTube.

Please contact me if you would like to know more about the society:

rosiejaneparker@gmail.com

**Rosemary Parker**

## Modbury Friday Art Group

We're a friendly and informal group who enjoy meeting for "a natter, splatter and cake" at the MARS Pavilion, Queen Elizabeth II Recreation Ground, from 10:00am to 1:00pm every Friday.

Join us for a taster session and get creative!

More info, call Michelle on 01548 830645.

**Michelle Hardisty**

Tell us about your club, society or organisation by writing to us at **modburymessenger@gmail.com**.

Send us your text as Word files and your pictures as jpegs. Make sure you own the copyright of any images you send us.



## Modbury Branch Royal British Legion

The next Business Meeting of the Modbury and District Branch of the Royal British Legion will be the AGM taking place in The Club on Wednesday 2<sup>nd</sup> October starting at 7.30pm. New members are always most welcome.

**David Scott**

## walk&talk

The October walks are on 1<sup>st</sup>, 8<sup>th</sup>, 15<sup>th</sup>, 22<sup>nd</sup> and 29<sup>th</sup>.

The venue and travel arrangements for each of the walks will be discussed and decided at the previous week's walk.

Walk Leader contact details:

Sue Rogers 01548 831289

Jean Wright 01548 810029

Catherine Speight 01548 830195

**Sue Rogers**



**ERMINGTON HOUSE**  
Quality Residential Care



Ermington House

**CQC overall rating**

Good

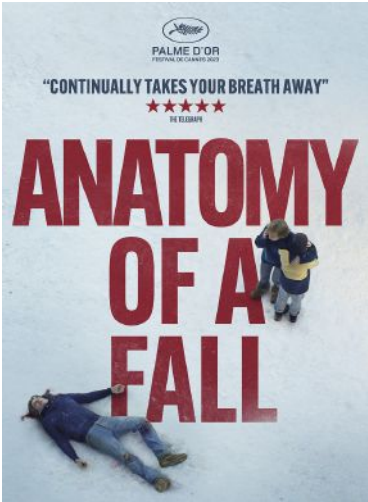
6 January 2021

*Quality Care 24 hours a day in an idyllic location*

- 24-hour Person-Centered Care
- Highly trained, caring and attentive staff
- Daily stimulating entertainment and activities
- Home cooked, nutritional and appetizing meals
- Safe and secure environment
- Daily visits by District Nurses
- Regular visits by Chiropodist, Hairdresser, Dentists, Opticians and GP's
- Beautiful personalized en-suite bedrooms
- Respite and Long-term Care

**Ermington House, Ermington Nr Ivybridge, Devon PL21 0LQ**  
**Email: [enquiriesermingtonhouse@outlook.com](mailto:enquiriesermingtonhouse@outlook.com) | Tel: 01548 830076**

Holbeton Film Club



October's film is **Anatomy of a Fall** (certificate 15 - strong language, bloody images). Winner of an incredible 114 awards including Cannes Palme d'Or 2023, Oscar for Best Original Screenplay 2024, awards for Best Actress and Best Director.

A gripping and enigmatic story about a writer (played by Sandra Hüller) and what happens when her husband is found dead at the base of their chalet... Set in France but mostly in English.

This is showing on Friday the 11<sup>th</sup> October 2024 in Holbeton Village Hall. Doors open 7pm. The programme starts at 7:30pm. Tickets on the door still only £4 (cash only). Ice creams will be on sale for £1.

Our forward programme is:

Vindication Swim, PG  
Wonka, PG

Saturday 9<sup>th</sup> November  
Friday 13<sup>th</sup> December

Harry Baumer 01752 830274, [harryluson@gmail.com](mailto:harryluson@gmail.com)



Harry Baumer

INTENDED MONTHLY FLAG HOIST AT PALM CROSS GREEN - October

Date	Masthead	Starboard Yard (Plymouth) - West	Port Yard (Modbury) - East	Event
07	Union Flag	AFGHAN	Ans202 <sup>nd</sup> sub1	Start of Afghanistan War 2001
11	Union Flag	2BOER	Ans1893 <sup>rd</sup> sub	Start of Second Boer War 1899
14	Normandy Flag	HASTNG	1063 <sup>rd</sup> sub	Battle of Hastings 1066
20	White Ensign	TRAF3 <sup>rd</sup> subL	SUN	Trafalgar Sunday
21	White Ensign	TRAF3 <sup>rd</sup> subL	1805	Battle of Trafalgar 1805
24	UN Flag	FOUND	1945	Founding of the UN 1945
25	Army Flag	AGINCT	141 <sup>st</sup> sub5	Battle of Agincourt 1415
28	RM Flag	FOUND	162 <sup>nd</sup> sub4	Founding of RM 1664
29	Union Flag	SUEZ	Ans1956	Start of Suez Crisis 1956

David Scott, Modbury Chief Yeoman

- Oil Installations, Servicing & Repairs
- Unvented Cylinders
- Bathrooms & Showers
- General Plumbing

Tel: Modbury 01548 830609  
Mobile: 07811 934551

Group accommodation with flexible indoor space, TQ7 4AP.  
Contact Cathy 01548 810079  
[info@bigburyholidays.co.uk](mailto:info@bigburyholidays.co.uk)  
[www.bigburyholidays.co.uk](http://www.bigburyholidays.co.uk)

ARE YOU PAYING TOO MUCH TAX ?  
ARE YOUR ACCOUNTS AND TAX AFFAIRS UP TO DATE ?  
ARE YOUR ACCOUNTING SERVICES COMPETITIVE ?

FOR A SERVICE SECOND TO NONE CONTACT

MARTIN E RANWELL, FCA  
**ELLIOTT & PARTNERS**  
ACCOUNTANTS AND TAX CONSULTANTS

KINGSWAY, 10 THE PRIORY,  
MODBURY PL21 0TL  
AND AT 6 MODBURY COURT, 32 CHURCH STREET  
T. 01548 830432 M. 07763 526814  
[martinranwell@googlemail.com](mailto:martinranwell@googlemail.com)

EXTENSIVE EXPERIENCE IN BOTH COMMERCE  
AND THE PROFESSION  
ALSO PROPERTY MANAGEMENT SERVICES



## Helping Hedgehogs in Autumn

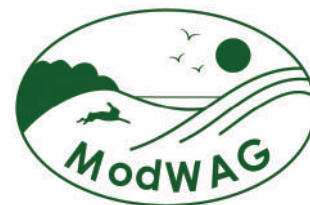
October and November are the months when there is a lot of hedgehog activity as they build up fat supplies in preparation for the winter hibernation and may start nest building.

This year, with a cold, late Spring, the second brood babies are later than normal, and therefore small for the time of year, coming into colder months.

So it is really important that, more than ever, we support our young hog population in Modbury so that they are fit for winter. If you are not already feeding them, this would be a good time to start. There is masses of practical information about hedgehogs on various websites, including the catchy Hedgehogs R Us, and British Hedgehog Preservation. Make or buy a cat-proof hedgehog feed box and feed them either hedgehog pellets, or dry kitten food. Wet cat and dog food is also ok.

- Keep putting out supplementary food and water but remember, never feed any milk-based food or drink, or bread.
- Take care when moving piles of autumn leaves and always check bonfires carefully before lighting
- Be particularly careful when using strimmers/mowers etc.
- If you see a hedgehog in distress, then phone one of the local rescue centres for advice, e.g. Prickles in a Pickle.

Thanks for helping hogs,



**Modbury Wildlife Action Group**

### ALAN MAHER ELECTRICAL CONTRACTORS LTD

- *Electrical Installations*
- *Electric Car Charging installations*
- *Intelligent Lighting*
- *Home Entertainment.*
- *Design, Installation and Testing.*
- *Condition Reports and PAT testing*

**Phone 01548 811290 / MOB 07966 168 928**  
*e-mail:-alanmaherelectricalLtd@gmail.com*



[www.let-it-out.co.uk](http://www.let-it-out.co.uk)

*The flexible approach  
to letting your holiday home*

Gail Critchlow  
07889 628514

Liz Baker-James  
07388 673228



**Do you or a loved one need a little extra help?**

**WE ARE HERE TO HELP**

**Carers Direct SW Ltd is local not-for-profit care team of dedicated, well trained, friendly, local carers.**

**We can provide from one hour to 24-hour care. We also provide night care.**

**Tasks undertaken include personal care, meal preparation, prompting medication, appointments and social outings.**

**Contact us for more information on.**

**01548 854358 or Email. [office@carersdirect-sw.co.uk](mailto:office@carersdirect-sw.co.uk)**

**You are welcome to pop in and see us at our office.**

**Unit 2N South Hams Business Park. Churchstow,  
Kingsbridge. TQ7 3QH**



# *Do you living in Modbury?*

**If so, why don't you join these groups and meet and make new friends?**



## **Ladies and Gents Who Lunch**

**(Cost £15-20)**

**Meeting fortnightly in local pubs**

Contact Liz to book 01548 830313.

## **Ladies and Gents Who Stroll and Chat (Free)**

**Wednesdays 11-11.30 am Poundwell Meadow**

**and then at the Cool Bean Café**

Contact Wendy for info: 01548 831219

## **Ladies and Gents Who Take Trips Out**

**(£ please ask)**

**Meet at Modbury Post Office; 9.30- 4.30pm**

Contact Liz for info and to book: 01548 830313.

## **Ladies and Gents Who Craft, Knit, Colour**

**(or simply sit and chat) (cost £3)**

**Memorial Hall - Thursdays - 2-4pm includes tea**

Contact Wendy for info: 01548 831219.

## **Ladies and Gents Who Get Active (cost £3)**

**Seated dance and singing - MARS -**

**3rd Wednesday of the month 2.30-4.30pm**

Includes tea and cake

Contact Jenny for info and to book 07787786594

## **Ladies and Gents Who Meet for Coffee**

**Mondays - 11 am - Cool Bean Café**

All welcome to join the table.

Contact Wendy for info: 01548 831219



***Shop &  
Socialise***





## Modbury and South Hams Creative Writing Group

We at The Modbury and South Hams Creative Writing Group meet every month to read and discuss our work. We are a small group of lively individuals who write for all sorts of different reasons. Each month we set ourselves a challenge or theme to hang our ideas on (although we have been known to completely digress).

This month's challenge was 'The Beach'. Responses came in the form of short stories and poetry. Below is a submission which one of our members brought to the meeting inspired by a recent visit to Dorset.

We are keen to welcome new members, so if you enjoy creative writing, why not join us. We meet usually on the first Saturday of the month at the Queen Elizabeth 11 Pavilion in Modbury at 10.00am.

Call Jody Fendick for more details: 07502 009103. [www.facebook.com/modburyc creativewritinggroup](http://www.facebook.com/modburyc creativewritinggroup)

**Mandy Field**

### Weymouth Beach

I see me  
Squatting at the cat-lapping-edge  
Of a murky coloured sea  
Pushing my fingers into the fudgy sand

I see me  
In the don't-go-too-deep frolic  
Of a seaweed swirl  
Whooping, flinging, dunking, diving

I see me  
In the family-strong-hold  
Of a staked out encampment  
Dishing out tea from a glinting thermos

I see me  
In the let's-just-sit-for-a-while amblers  
Of a be-deckchaired promenade  
Gazing out where the chalk cliffs rise and plunge

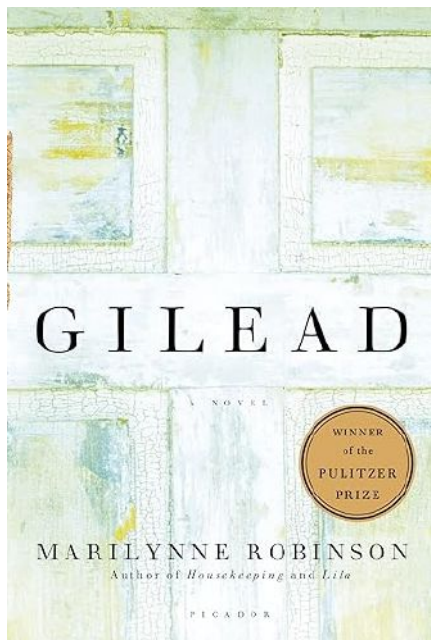
And what of me?  
In the furrowed-and-burrowed corduroy  
Of a long and shimmering strand  
Slipping through the narrow neck to all eternity

**Lucy Brown**



## Books and Banter Recommends:

### Gilead by Marilynne Robinson



This is the fictional autobiography of John Ames, a seventy-six year-old white Congregationalist minister living in the town of Gilead, Iowa (also fictional) towards the end of the 1950's. It is the first book in a quartet of novels telling the same story from different viewpoints, and won the Pulitzer Prize for Fiction the year after it was published in 2005.

John knows that he is dying and his motivation is to write down his thoughts and memories of his family and life experiences to leave to his young son once he is gone. Even though he is at the end of life, he has a deep appreciation of beauty in the everyday. In his recounting, he does not shy away from expressing sadness at losing his first wife and baby daughter, but is so grateful for a second wife and son late in life and how that came unexpectedly. He also explores the relationship he has with Jack, the son of his oldest friend who has recently returned to Gilead – the distrust he had felt on the young man's return to Gilead ends with genuine forgiveness as he learns of his true situation.

Don't be put off by some biblical and theological references and take the wisdom of an old man for what it is. You may find, as I did, a gentle and contemplative read written with positivity and acceptance.

**Kate Duckering**



# MODBURY MESSENGER

## COMMERCIAL ADVERTISING RATES MODBURY MESSENGER OCTOBER 2024

SIZE	1 INSERTION		3 – 10 INSERTIONS (Per insertion)		12 INSERTIONS (Per insertion)		12 INSERTIONS (Year Total)	
	Black	Colour	Black	Colour	Black	Colour	Black	Colour
1/8 page	£15.00	£30.00	£13.00	£26.00	£8.00	£16.00	£96.00	£192.00
1/4 page	£30.00	£60.00	£25.00	£50.00	£15.00	£30.00	£180.00	£360.00
1/2 page	£54.00	£108.00	£43.00	£86.00	£25.00	£50.00	£300.00	£600.00
1 page	£96.00	£192.00	£74.00	£148.00	£40.00	£80.00	£480.00	£960.00

### Advertisement Sizes:

**One eighth page**

**One quarter page**

**One half page**

**Full page**

**Portrait or Landscape 1.75" x 2.5" (45mm by 65mm)**

**Portrait 3.5" x 5" (90mm x 130mm) Landscape 7" x 2.5"**

**Landscape 7" x 5" (180mm x 130mm) Portrait 10" x 3.5"**

**Portrait 7" x 10" (180mm x 250mm)**

**To advertise in the Modbury Messenger, contact the Editor, Lynne Barnes via email on**

[modburymessengercic@gmail.com](mailto:modburymessengercic@gmail.com)

## Modbury Messenger November 2024

### Copy Date 10th October

The copy date for the November 2024 Modbury Messenger is 10th October. Please email all articles, notices of events and paid advertisements to [modburymessengercic@gmail.com](mailto:modburymessengercic@gmail.com).

The Modbury Messenger is published by Modbury Messenger CIC and is printed by ESP Print. The views expressed in the Messenger do not necessarily represent those of Modbury Messenger CIC.

The Editorial Committee reserve the right to précis/abbreviate any copy submitted for inclusion in the Modbury Messenger. Their decision is final. The contents of the Modbury Messenger may not be reproduced in any form without the prior written permission of Modbury Messenger CIC.

Guidance for submitting material is available online at <http://modburymessengercic.co.uk/about.html>

**Persons submitting entries with art or photographs not drawn or taken by themselves must confirm they have obtained copyright permission, or agree to pay any copyright fine which is subsequently raised**

**[modburymessengercic@gmail.com](mailto:modburymessengercic@gmail.com)**

## MODBURY MESSENGER CIC

Modbury Messenger CIC is a Community Interest Company and as such is registered by the Registrar of Companies for England & Wales, Northern Ireland or Scotland. A Community Interest Company is a special type of not-for-profit limited company which exists to benefit the community. The purpose of Modbury Messenger CIC is to disseminate information about events, notices and articles of interest to the people of Modbury and it does this by publishing the Modbury Messenger, a printed newsletter, every month with 1000 copies delivered to homes and businesses within the Parish of Modbury. An online copy of the Modbury Messenger is available to neighbouring communities, advertised via social media and on our website [modburymessengercic.co.uk](http://modburymessengercic.co.uk).

Advertisers are charged a fee for advertising in the Modbury Messenger and this covers the cost of producing the Modbury Messenger. The Board of Directors, Company Secretary, Editor, Proofreaders and Distributors are all volunteers.

**Directors of Modbury Messenger:** Diana Lynne Barnes, & Bernard Taylor.

**Company Secretary:** George Rosevear FCIS.

**Treasurer:** Edward Holt

**Editorial Committee:** John Bower, Lynne Barnes, Ira Young.

Modbury Messenger CIC has produced the Modbury Messenger as an independent CIC since September 2018. Previously, it was published by Modbury Parish Council.





*Landscaping and General Building*

**Including:**

**Stone Walling • Retaining Walls • Groundworks  
Drainage & Irrigation • Driveways  
Patos & Paths • Gates • Fencing & Decking etc**

Family Business Since 1976  
Company No.3942610

**Competitive Quotes Given, Full Insurance**

Gatcombe Mill - Littlehempston - Totnes - TQ9 6LW

**Office:** Tel- 01803 864 871  
**Email:** enquiries@afbrowns-sons.co.uk  
**Web:** www.afbrown-sons.co.uk

**Est. independent  
LOCAL ELECTRICIAN**

**Dependent, honest  
and reliable service**



**LightWorks**  
Domestic Electrician

- Complete rewires and new builds
- New 18th edition Consumer Units/Garage Units
- Landlords & Insurance Certificates
- Domestic electrical fault finding
- Specialising in garden, kitchen and floor lighting from planning to certification

All work guaranteed/certificated  
Fully insured, qualified &  
registered with NICEIC



Call Phil for a free, no obligation quote or callout

**Tel: 07769 840012**

Email: lightworks.electrics@gmail.com

# For customers who expect more from their estate agent.

*Our team has over 80 years of South Devon estate agency experience.*

**01548 831163**  
modbury@marchandpetit.co.uk

**SOUTH HAMPS' LEADING  
ESTATE AGENT**

**Marchand Petit**  
ESTATE AGENTS

**Sales  
Lettings  
Auctions**

# HELEN MOORE PROPERTY

POWERED BY  
**exp** UK

- Professional personalised marketing to suit your property and circumstances
- Over 30 years experience selling homes across the South Hams & Plymouth
- One to one service from start to finish
- Over 80 Five\* Reviews
- Local. Independent. Value. Effective.



Call 01752 962162

[www.helenmoore.exp.uk.com](http://www.helenmoore.exp.uk.com)

YOUR LOCAL  
INDEPENDENT  
ESTATE AGENT

