



MODBURY MESSENGER

'SEPTEM'

the seventh month in the 10-month Roman calendar before January & February were added

also good for organic carrots

SEPTEMBER

illustration - Andy and Polly Rathbone

For the People of Modbury & Brownston

Volume 25, Issue 318 - September 2025

Grand Opening of Modbury's Marvellous Mural

Saturday 1st August saw the ribbon cutting ceremony of the new marvellous mural. The wall nearly 100 feet long has been painted by wildlife artist John Ashton with the title Moor to Sea.

Quote from John – "It has taken me about 2 months – I've enjoyed literally every minute of it - I have met and talked to so many people and made new friends. I have strayed from my original plan and have added more birds".

John added a wren for a child called Wren, a Robin as it is our National bird, woodpeckers because a lady told John that one comes to her bird feeder every day. He added swifts because there are swift boxes on the church spire which led to swallows and house martins



Local artist John Ashton who designed and painted Modbury's Marvellous Mural

being added too, all a familiar and welcome sight in Modbury during the summer months.

BBC Spotlight's Janine Jansen cut the ribbon and was delighted to have been invited. She was most impressed with the work of John Ashton. The ensuing programme was shown on BBC Spotlight on Sunday 2nd August.

The Mural was the brainchild of the **Modbury Traders**, and we hope that you will tell people about it so they come from far and wide to visit our lovely town and then stay to browse the shops and have a coffee or a drink in one of our many establishments. It will also give pleasure to our residents as they walk down to the meadow, visit the Health Centre or just look at the beautiful images John has created.

Cont on p. 3

FALCON

ENVIRONMENTAL SERVICES

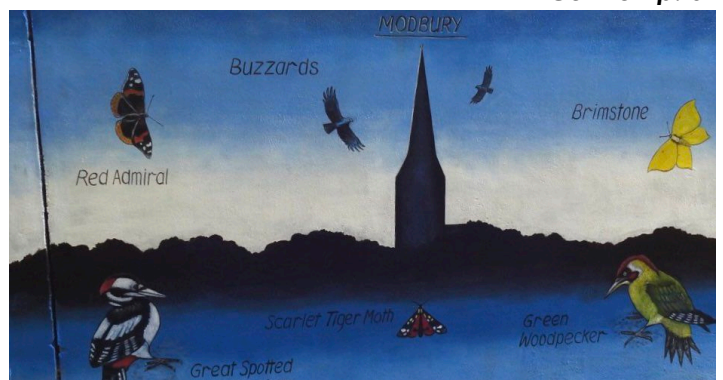
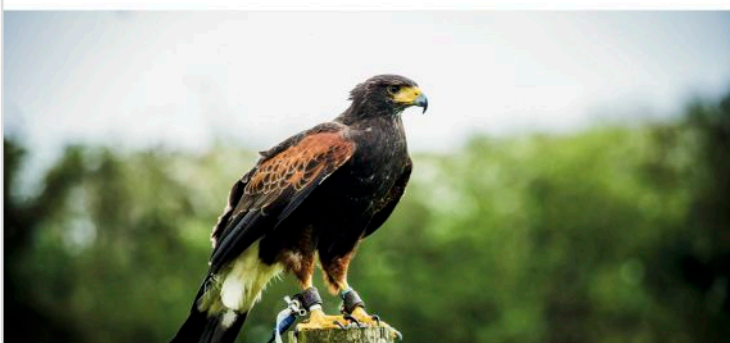
Local trusted experts in:

 **Pest control**  **Wildlife management**
 **Specialist cleaning**  **Bird control**

We combine our environmentally-friendly approach with proven modern and traditional methods.

Call Us: 01752 929292 | www.falcones.co.uk

Google ★★★★★



MICHAEL R HAGGER

Professional Painter & Decorator

City & Guilds Advanced Craft trained

Over 40 years decorating
experience, with the last 26 years
in the wonderful South Hams.

Fully Insured



For a friendly,
no obligation
estimate or
reference

Tel: 07977445521



MARTIN LEY PLUMBING & HEATING

- Oil Installations,
Servicing & Repairs
- Unvented Cylinders
- Bathrooms & Showers
- General Plumbing

Tel: Modbury 01548 830609
Mobile: 07811 934551

Tall Orders Landscaping

All aspects of gardening

*Hedge trimming / Tree work

*Grass cutting - Lawns to Paddocks

*Fencing / Turfing / Stump grinding

*Weed control / Lawn Scarifying

Logs Supplied

*Locally sourced hardwood

*Delivered in dumpy bags / nets

Tel . 01548 831139 / 07967258318



ARE YOU PAYING TOO MUCH TAX ?
ARE YOUR ACCOUNTS AND TAX AFFAIRS UP TO DATE ?
ARE YOUR ACCOUNTING SERVICES COMPETITIVE ?

FOR A SERVICE SECOND TO NONE CONTACT

MARTIN E RANWELL, FCA ELLIOTT & PARTNERS

ACCOUNTANTS AND TAX CONSULTANTS

KINGSWAY, 10 THE PRIORY,
MODBURY PL21 0TL
AND AT 6 MODBURY COURT, 32 CHURCH STREET
T. 01548 830432 M. 07763 526814

martinranwell@googlemail.com

EXTENSIVE EXPERIENCE IN BOTH COMMERCE
AND THE PROFESSION
ALSO PROPERTY MANAGEMENT SERVICES

K Woodward Home Improvements

- Bathrooms and Kitchens
- Extensions
- Property refurbishment
- Structural Alterations
- Tiling and Flooring

Multi Skilled Professional Approach
to Improving your Home



Tel 07772 921544
keithwoodward1220@gmail.com

Modbury taxi



Contact
Tel : 07455393693

Modbury Private Hire Taxi

Pre booking is required for all local and longer
distance journeys. This includes daytime,
evening and airport transfers. Prices are
agreed on booking.

Please don't hesitate to contact us if you have
any questions.

07455393693



Architectural Drawings and Planning Applications

Contact Alayne Harris B.D.
0755 191 0874
info@designedspace.co.uk

Based in Modbury



GEORGE H.W. ROSEVEAR
& COMPANY
A DIVISION OF HOLBROOK ASSOCIATES

ACCOUNTANCY, TAXATION AND
COMPANY SECRETARIAL SERVICES

01548 831427

3 MODBURY COURT, 32 CHURCH ST.,
MODBURY, DEVON, PL21 0QR
george@holbrookass.com

BIGBURY CAMPING BARN



Short stays and weekend breaks.
Group accommodation with
flexible indoor space, TQ7 4AP.
Contact Cathy 01548 810079
info@bigburyholidays.co.uk
www.bigburyholidays.co.uk

Grand Opening of Modbury's Marvellous Mural (cont.)

This is a **community project** and as such is being funded through donations and fund-raising events. Please continue to support the efforts to raise money for the things that enhance the town.

There will be a number of events which will be advertised in the Messenger and all usual social media platforms such as **Modbury Community Facebook page**. There are collecting tins in some of the shops in Modbury.

Bank details below should you wish to make a donation by bank transfer.

Account Name: **Modbury Town Improvement Fund**

Bank: **Lloyds Bank**

Sort Code: **30-94-72**

Account No: **07273165**

Sarah Wyatt



Janine Jansen is presented with A bouquet by project co-ordinator Sarah Wyatt



Chair of Modbury PC, Barbara Price, Janine Janson and Modbury Town Cryer, David Scott at the opening of Modbury's Marvellous Mural



Modbury Townsfolk at the opening of Modbury's Marvellous Mural

Janine Jansen of BBC Spotlight cuts the Ribbon



**Modbury's
Marvellous
Mural**





Tailor-made **travel
arrangements to
Africa and Latin
America.**

35 Church Street, Modbury • 01548 858 272
sales@distinctiveamericas.com
www.distinctiveamericas.com

**DISTINCTIVE
AFRICA**



**DISTINCTIVE
AMERICAS**



Modbury Therapy Centre *Health and Wellbeing Centre*

Offering Complementary Therapies

Acupuncture, Reflexology, Massage Therapy, Homeopathy, Counselling,
Psychotherapy, Nutritional Therapy, Yoga, Pilates, Meditation,
Cognitive Behavioural Therapy, EFT, Life Coaching, Sound Healing

www.modburytherapycentre.co.uk
enquiries@modburytherapycentre.co.uk

07973 367517



To advertise your business in the Modbury Messenger, please contact us at
modburymessengercic@gmail.com
www.modburymessengercic.co.uk



Experience Premium Quality At Home Care with Visiting Angels

Visiting Angels provide exceptional assistance and personalised care for your loved ones to foster independence and enhance quality of life.

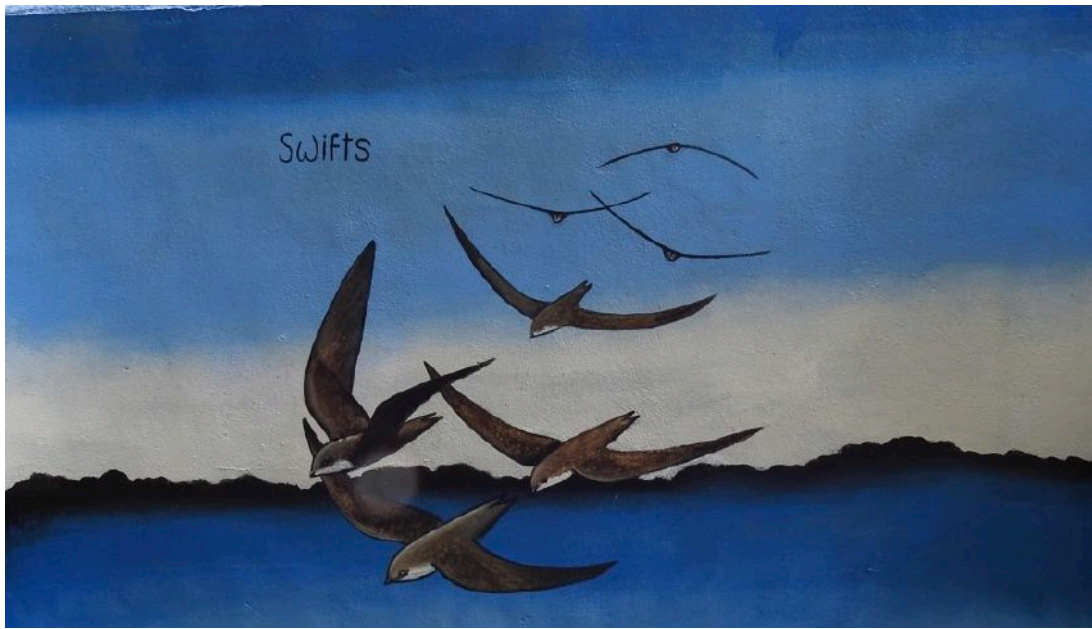
KEY SERVICES :

- Companionship
- Meal preparation and planning
- Light housekeeping
- Medication reminders
- Assistance with mobility
- End of life care
- Post hospital stay care
- Personal care



Visiting Angels South Devon
Call 01752 422105
southdevon@visiting-angels.co.uk

Visiting Angels 
 QUALITY AT HOME CARE



Modbury Cries from the Town Crier

OYEZ OYEZ OYEZ

Modbury Parish Councillors, Modbury Marvellous Makeover Committee, VIPs, Modbury residents, my Lords, Ladies and Gentlemen. Welcome to you all for the grand official opening of the magnificent, marvellous Modbury Mural here on 2nd day in the 8th month in the year 2Ms, 2Xs, 1V – 2025 in the year of Our Lord. Please pray silence for Mrs Sarah Wyatt.



Thank you all for coming and continuing to make Modbury the tremendous town it is. Do continue to support the various initiatives around the town to make our town even more special but let us now give three hearty cheers for artist John Ashton and his Marvellous Modbury Mural.

Three cheers for John Ashton!

GOD SAVE THE KING

OYEZ OYEZ OYEZ

David Scott

A.R.Hilder

B.Sc est 1985

Garden design, care & Maintenance specialist

I can care for your borders, shrubs, trees, hedges, vegetable patch & fruit trees

FORMER VOLUNTEER NATURE RESERVE WARDEN AND FORMER HEAD GARDENER TO A CORNISH ESTATE WITH OVER 40 YEARS OF EXPERIENCE. I CAN HELP TO ENCOURAGE MORE WILDLIFE INTO YOUR GARDEN

Call 07762 269436 for free initial consultation

A Great Time Out and Opportunity to Support a Valued Local Charity



Our last event of the year is Bowringsleigh Nr Kingsbridge on Sunday 7th Sept 2:00 pm - 5.00 pm.

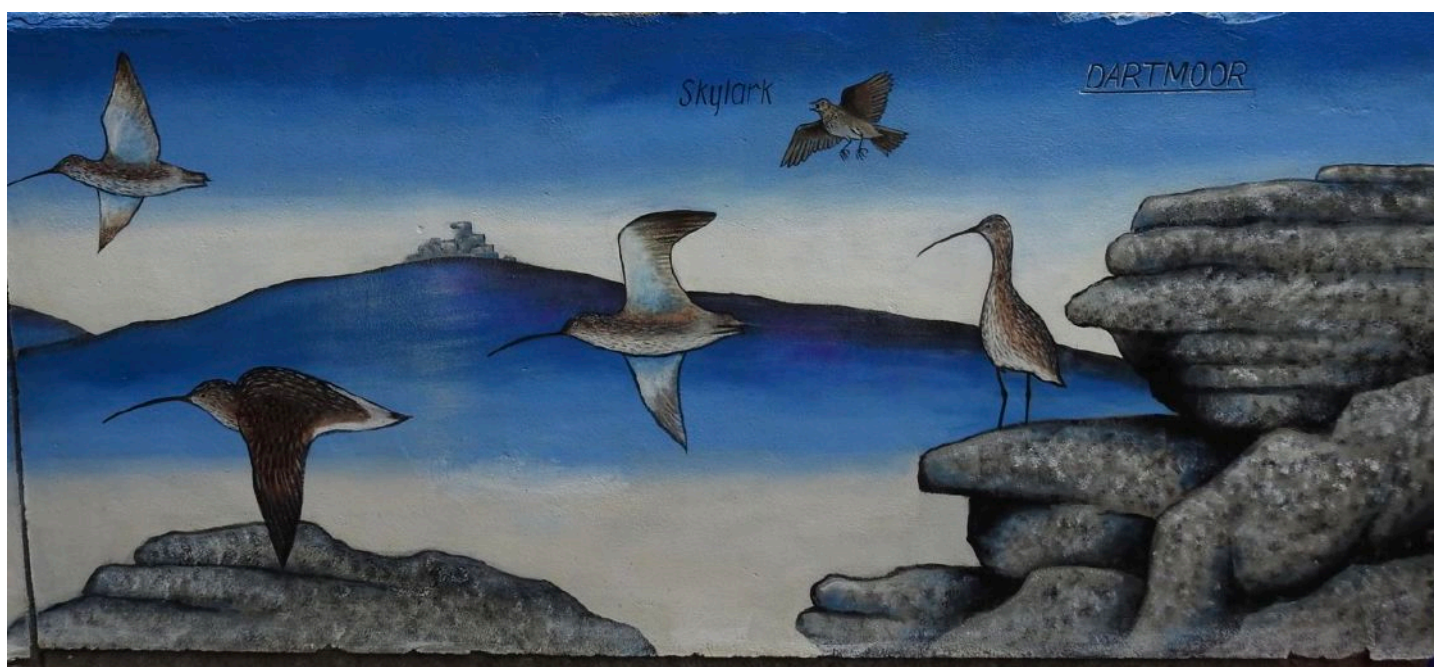
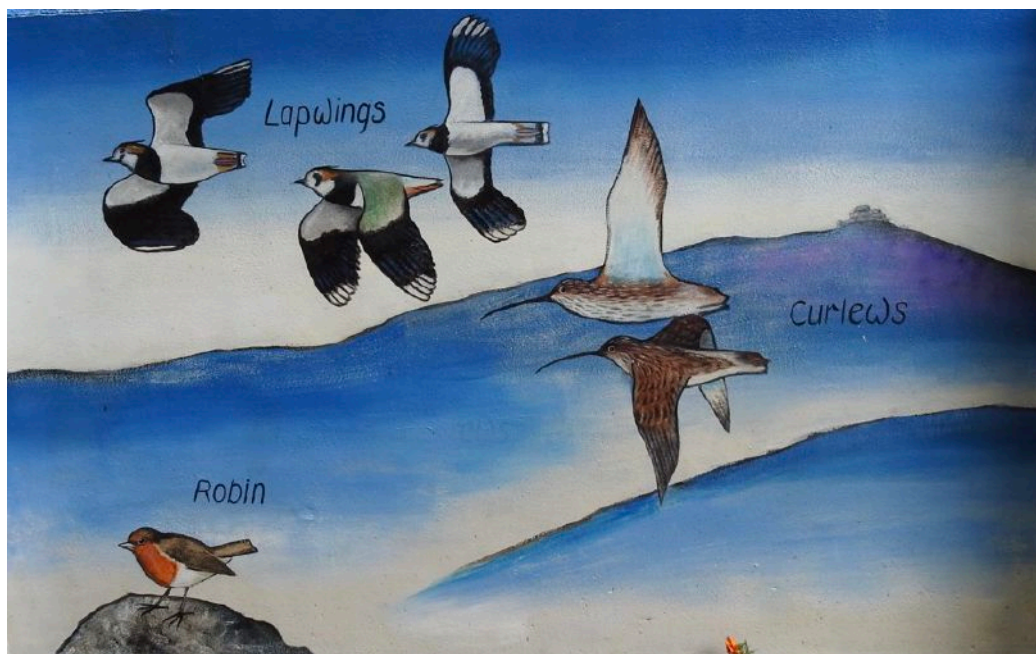
Please check the link to St Luke's website

[Open Gardens | St Luke's Hospice Plymouth](#)

St Luke's is the charity providing hospice care in the South Hams. We have community nurses, social workers and volunteers who work and live locally; patients are cared for in their own homes or at our inpatient facilities in Plymouth when necessary. Your support for this much valued local service is especially important at this time of great need and high inflation, and would be greatly appreciated.



Modbury's Marvellous Mural



Emergency Planning – can you help?

Last winter, during storm Darragh, the Parish Council came close to mobilising its emergency plan arrangements as a very rare red wind warning was issued for North Devon and an amber warning for the South Hams. In preparing to implement its plan, a number of shortcomings in the arrangements were noted and so a full review of the plan is being undertaken by an Emergency Planning Working Group.

We think it important that membership of the group should be wider than just councillors and so are seeking help from other groups and individuals interested in improving our community's resilience in the event of natural or man-made disasters.

It will not be an onerous commitment – please do come forward if you have an interest, experience or expertise in such matters. Please contact the Parish Clerk to make your interest known.



**Barbara Price,
Chair Emergency Planning Working Group
Modbury Parish Council**



Poppy Appeal Social

Friday 5th September 6.30 pm

Fish and Chip Supper £20.00

Includes donation to appeal

Cleo's @ The Modbury Inn

Booking essential

Call 01548 831230



Modbury Branch Royal British Legion

The next Meeting of the Modbury and District Branch of the Royal British Legion will be a Social Gathering in Modbury Inn (Cleo's Bistro) on Friday 5th September at 6.30pm for a tasty Fish and Chip Supper and there is a donation for the 2025 Poppy Appeal.

Booking is essential and do see the poster.

David Scott

Allotments in Modbury

Modbury has two sites, one on Palm Cross and one on Church Lane.

If you are interested in taking up an allotment contact the Parish Office:

Tel: 07467 134225

email: parishclerk@modburyparishcouncil.gov.uk

Jane Bullen



KIKI DEE & CARMELO LUGGERI

www.kikiandcarmelo.com

The Long Ride Home Tour

**SATURDAY 20th
SEPTEMBER
7:30pm Doors**

Kiki Dee, one of the uk's finest vocalists, accompanied by virtuoso guitarist Carmelo Luggeri. For over five decades Kiki's emotional soulful vocals have won her a huge following.

She was the first female british artist signed to Tamla Motown. As well as co writing & producing for Kiki, Carmelo is widely recognised as one of the world's top acoustic guitarists.



**2 HOURS OF
KIKI AND CARMELO.
NO SUPPORT!**

**FULLY SEATED SHOW
GET YOUR TICKETS
EARLY.**

**THIS SHOW WILL
SELL OUT !!**

Expect all the huge hits including "Amoureuse", "I've Got The Music In Me", "Loving & Free" plus of course platinum chart topper with Elton John "Don't Go Breaking My Heart"

Stunning new songs plus a few surprises ..a spellbinding performance created from over 25 years on the road.

MODBURY MEMORIAL HALL

Back Street, Modbury, PL21 0RF
Information Hotline: 07828 289269

Advance Tickets £20.00
from: Modbury Post Office

14 BROAD STREET PL21 0PU
or WeGotTickets.com

WeGotTickets



Cleo's Bistro

@thomodburyinn

01548 831230

Friday and Saturday evening dining

Bar also open

Fitness studio

& 24/7 Gym



Unit A
Pearse Gardens
Modbury
PL21 0FX

★★★★★
Over 100 5 star reviews

Contact us to book
your 'No Sweat Intro'



www.bomberspt.co.uk

gym@bomberspt.co.uk



If Swing is Your Thing..



In Aid of St. Luke's Hospice

Saturday 13th September 2025; 7-11pm

At Modbury Memorial Hall, Back Street, Modbury, PL21 0QZ

*Come and dance the night away or simply enjoy
listening to Nationally Acclaimed*

‘The Drat Pack, starring James Billington’



With ‘Mad About Swing’ DJ



Please bring your own Drink and Nibbles.

Swing dance class suitable for beginners. Sprung dance floor.

**Tickets at £18 available in advance only from Heather 07876522934;
heather.hinkley@sky.com**



Registered charity No. 254402

Modbury Gospel Singers



We say goodbye to Jo Highley as musical director

It is all change at Modbury Gospel Singers this coming season! Founded in 2002 by the late Gill Miller-Williams, leadership was passed on to Jo Highley in 2013. However, after over 12 years as Musical Director, Jo is passing the reins on to Freya Harbottle, who also currently leads Wild Goose Choir, a mixed-voice, folk-based community choir based in South Brent. Freya has studied voice both at undergraduate and postgraduate level and works as a professional folk musician in the duo Harbottle and Jonas. She has written and recorded several albums, toured extensively (both nationally and internationally) and has led courses at Dartington International Summer School for two consecutive years, including running the Folk Choir.

We caught up with Freya last week to chat about her plans for the future: "I am very excited to be taking on the leadership role for Modbury Gospel Singers and really look forward to getting started in September. After watching the choir perform recently, it will be lovely to continue to sing material that the singers know so well and perform with such enthusiasm. Alongside this, I plan to introduce some new gospel songs to the repertoire and mix in the odd blues/folk/gospel crossover song to bring a slight variation and perhaps a different way of singing together. I look forward to being able to share my knowledge and skill set with others, to help engage people with the benefits and joy that singing can bring".

Are you interested in taking part? Modbury Gospel Singers caters to all ages, vocal ranges and abilities, with no requirement to be able to read music and no audition necessary. We regularly hold performances, which have been superbly supported by the wonderful people of Modbury and beyond, helping us to raise money for charities such as the Kingsbridge Foodbank and towards the May Fair Fund. New members will always be warmly welcomed into the group, in particular, we are currently very much in need of those in the tenor and bass vocal range. The Autumn term starts on Thursday 25th September at the MARS pavillion, with tea, coffee and chat from 7pm and singing from 7:30pm until 9:30pm. For more information or to contact us, please visit our website (<https://www.modburygospelsingers.org.uk/>) or our Facebook page (Modbury Gospel Singers).



Choir members as Jo's farewell party

Kate Byrom



Choir members are all ages Including 105 year old Ivor Davies



Jo directs the choir for the last time

Modbury Cries from the Town Crier -

Mewstone Candles Opens Mewstone Home

OYEZ OYEZ OYEZ

My Lords, Ladies, Gentlemen, candle creators, cosmetic connoisseurs, perfumes providers, smelling soap soakers and tradecraft traffickers.

Many will have noticed that there is no longer a bank in the town and even the Black Horse has bolted. However, today, on the 2nd day of the eighth month in the year 2Ms, 2Xs 1V - 2025, we are here to welcome you to the opening of a new shop here in Broad Street, in the Heritage Market Town of Modbury, here in the Parish of St George, the patron saint of England, made famous as being the first town to ban plastic bags on 7th day of June in the year 2007 in the year of Our Lord. It is good to have a new shop here in the centre of our town and we do all wish Carys and Debs every possible success here in Mewstone Home as they hang the new Open sign and open the doors of a great addition to our superb shops here in Modbury.

Three cheers for Mewstone Home!

GOD SAVE THE KING

OYEZ OYEZ OYEZ

David Scott



FIONA'S FANCY FEET
DANCE SCHOOL

CLASSES IN MODBURY
AND KINGSBRIDGE

Scan the QR code




CONTACT FIONA ON
07800883367
FIONASFANCYFEET@GMAIL.COM
WWW.FIONASFANCYFEET.ORG.UK

CELEBRATING 10 YEARS

imakewebsites.



NEED A NEW
WEBSITE?
I CAN MAKE IT!

Contact Vicky
01548 831910
www.imakewebsites.co.uk

Are you aged 17 - 25?

Any person living in Modbury Parish (including Brownston) who is leaving school to start higher/further education or a training scheme, is entitled to a small, one-off grant from

The Modbury Education Foundation

Please apply by 1st October 2025 with your full name, postal address and brief details of the course you will be taking

to sue@mercer5.co.uk

MODBURY PARISH COUNCIL

Modbury Parish Council Office, 1 Modbury Court, PL21 0QR
Tel: 07467134225 email parishclerk@modburyparishcouncil.gov.uk

Your Councillors are:

Bill Cole	01548 830913
Chris Field	07836 592854
Richard Foss	01548 721420
Barbara Price (Chair)	07739752095
Tony Price	07801837129
Phil Smith (Vice Chair)	07759282404
Dave Trigger	07808742372
Ann Turner	01548830606
Sarah Wyatt	07794 662903

chrisfield@modburyparishcouncil.gov.uk
richardfoss@modburyparishcouncil.gov.uk
barbaraprice@modburyparishcouncil.gov.uk
tonyprice@modburyparishcouncil.gov.uk
philsmith@modburyparishcouncil.gov.uk
davetrigger@modburyparishcouncil.gov.uk
annturner@modburyparishcouncil.gov.uk
sarahwyatt@modburyparishcouncil.gov.uk

How can we help you? Councillors run drop-in surgeries on Sat. 10:00 - 11:00 am in the Parish Office at 1 Modbury Court. The Parish Clerk is in the Parish Council office on Tues & Wed, 10:30am - 05:00pm. Call into the office, phone, email or come along to our meetings at 7pm in the Pavilion, QEII Recreation Ground on the first Tuesday of every month and speak in the public forum.

Devon County Councillor (Salcombe Division):

Louise Wainwright

Tel: 07908 525663

louise.wainwright@devon.gov.uk

South Hams District Councillor (Charterlands Ward):

Bernard Taylor

Tel: 01548 830844

Cllr.Bernard.Taylor@southhams.gov.uk

Modbury Parish Council Meeting

Tuesday 5th July 2025, 7:00pm



Present were eight councillors, Cllr Bernard Taylor (South Hams DC), and two members of the public. Apologies were received from Cllr Richard Foss, and Cllr Louise Wainwright (Devon CC).

Public Forum

A member of the public raised the issue of central white road lines being sub-standard in certain areas, as well as general road markings in Church Street and Broad Street. He also made suggestions regarding the pedestrian crossing in Church Street.

South Hams District Council Report by Bernard Taylor

- Bernard offered congratulations to all involved with the Modbury Marvellous Mural in Poundwell.
- 98.7% of council tax in SHDC was collected, in the top 10 of English councils.
- Training is being given to all councillors on combating fraud within the SHDC system.
- Groundwork on archaeological investigations in Palm Cross are being undertaken as part of the planning process and not by Bloor Homes as preliminary work to any development.

Matters arising from the July MPC meeting.

- Orcheton flooding: pressure to resolve continues.
- Louise Wainwright (DCC) has been notified about street lighting issues.
- Approved grant applications have now been paid.

Planning Committee

- Re: the Old Chapel in Church Street - there has been no progress from SHDC planning to press the owners on its continued degradation. MPC considers this to be unacceptable and is pressing, not just for aesthetic reasons, but also for 'health and safety' considerations.
- Comments on Bloor Homes Palm Cross planning applications can still be made.

Maintenance Committee

- Renewal of the internal fence in the Memorial Hall play park is necessary and quotes are being sought
- Re: the Emergency Plan - more members of the community need to be involved and their participation is being sought.

To consider grant application

- The grant application from St George's Church for a contribution to works in the tower to maintain the clock, which is a town clock as well as the church one, was approved.

Strategic Delivery Plan 2025/26

This has been updated to include the realisation that MPC's Emergency Plan needs serious updating and there is now an Emergency Plan Working Group to do so, which will incorporate new statutory requirements on security implications related to gatherings of people within the Parish. There may be budgetary implications of these new requirements. The Plan was approved.

MPC report to Louise Wainwright

A detailed report on the activities of MPC and issues within the Parish has been submitted to Louise as the incoming DCC councillor. Various maps of the road and rights-of-way in Modbury have been prepared by Cllr Phil Smith and submitted to Louise for the attention of DCC Highways Department. These include road conditions, potholes and potholes repaired, traffic safety blackspots, and national cycle roadways.

Devolution

There is a roadshow on the implications which will be in Modbury Memorial Hall on the 22nd September.

South West Water and Modbury

The plans for the works on surface water run-off being diverted into the river have been delayed by issues with the culvert running underneath the Exeter Inn which need attending to by DCC Highways before SWW can be involved. MPC have requested a full public statement from SWW.

Parish Office opening hours

These are being changed to the office being open on Tuesday and Wednesday, 10:30am-5:00pm.

Community Engagement

- Work continues on developing the telephone box for community use.
- The Heritage Working Group has plans for promoting the Parish's history and environment.
- There will again be three pre-Christmas Saturdays, or possibly other days, with free parking in the town centre, two of which will be paid for by SHDC.
- A community larder is considered appropriate for Modbury and the practicality of its siting is being addressed.

Cont on p.12

Modbury Parish Council Report (cont)

Sustainability Group

- There are plans for a symposium on local nature and associated issues.
- A 'green awards' scheme for traders has been mooted with a survey of what is currently being achieved.
- Octopus Energy will be coming to talk to MPC in October about what they can do for us
- There will be energy roadshows coming here in the autumn for organisations working on making energy usage more efficient and renewable

Date of next meeting: Tuesday 2nd September 2025 @ 7pm

Tony Price



Shaping Devon's Future Engagement - Modbury Drop-In

Modbury Memorial Hall
Mon, 22 Sep 2025 2:00-4:00 pm

South Hams District Council: The way that Council services are delivered will change in the future. Come along and talk to the team about what's proposed.

Modbury Cricket Club News

There have been five games since our last month's report. On Thursday 10th July, the Club played Yealm CC and lost by 15 runs. On Sunday 13 July, we lost to Ermington by 7 wickets and on the following Sunday, we lost to Wembury by 103 runs. Our match on Tuesday 22 July against Holbeton was cancelled but our fortunes improved the following two Sundays with wins against Ugborough (45 runs) and East Prawle (27 runs). This means our playing record to 3 August is played 12, won six and lost six with four games cancelled.



By the time of distribution of this edition, the season will have ended, but you can keep up to date with all club news at: www.modburycc.co.uk

Remember, new members are always welcome. Contact me on 07759 282404 for more information.

Phil Smith, Secretary Modbury Cricket Club

Anna
Plymouth & South Hams

**bluebird
care®**

The Care Quality Commission logo, featuring a green star and the text 'Inspected and rated Outstanding'.

Expert care. In the comfort of home.

See how our Live-in Care services can help your loved ones stay in the place they feel best.

Call us for a friendly chat on
01752 347 700

A square QR code.

It's good to be home

Or visit
plymouth@bluebirdcare.co.uk

The logo for Coastal Computers, featuring a blue computer monitor with a white wave graphic on the screen.

**Coastal
Computers**

PC & Laptop Repair / Upgrades
Internet & Email Support
Device Security & Protection
Smart Home Devices
Data Migration & Recovery
General Guidance

www.coastal-computers.co.uk
info@coastal-computers.co.uk
07459 766420



KIDS' CHURCH - Kids' Church meets in Modbury Primary School. Parents, please drop off your Explorers (age 9+) and Discoverers (age 6-8) at the school from 9:15 am where they will be met by one of the leaders. After Kids' Church, the youngsters will be taken to St. George's to be with their parents at the end of the service. Climbers (age 0-5) will remain in St. George's, meeting their leader to be taken to the Lower Vestry. If you have any questions regarding Kids' Church, please contact Sara Chapman on s.chapman@modburyteam.org.

For St George's Parish enquiries contact Mrs Gill West, Churchwarden 07849253605

	Service	Service Leader
7th	Holy Communion and Kids' Church 9.30 am	Rev. Oli Long
14th	Holy Communion BCP 8.00 am All-Age Service and Baptism 9.30 am	Rev. Oli Long Rev. Oli Long
21st	Holy Communion and Kids' Church 9.30 am	Rev. Oli Long
28th	Sunday Worship 9.30 am Rooted - a service of contemporary worship 6.00 pm	Gill Snook Rev. Oli Long

Christian Comment:

This time of year many of us find ourselves echoing the words of Louis Armstrong: "...and I say to myself, what a wonderful world". We don't just say it to ourselves, but in Harvest hymns and prayers we reach out to the wonder maker. It is OK to reach out with questions as well, as you will see in the true story below.

Neil Barker

LULU AND THE ARCHBISHOP

A few years ago, journalist Alex Renton's six year old daughter, Lulu, wrote a letter to God. It read 'To God. How did you get invented?'

Alex felt that someone who believed in God should try and answer Lulu's question. And so, Alex sent Lulu's letter to Lambeth Palace. After a couple of weeks, someone at Lambeth Palace messaged Alex and asked him to tell Lulu that someone special was going to write to her. Eventually there came an e-mail. It read as follows;

Dear Lulu, your dad has sent on your letter and asked if I have any answers. It's a difficult one! But I think God might reply a bit like this.

"Dear Lulu, nobody invented me - but lots of people discovered me and were quite surprised. They discovered me when they looked round at the world and thought it was really beautiful or really mysterious and wondered where it came from. They discovered me when they were very, very, quiet on their own and felt a sort of peace and love they hadn't expected. Then they invented ideas about me - some of them sensible and some of them not very sensible. From time to time, I sent them some hints - especially in the life of Jesus - to help them to get closer to what I'm really like.

But there was nothing and nobody around before me to invent me. Rather like somebody who writes a story in a book, I started making up the story of the world and eventually invented human beings like you who could ask me awkward questions!"

And then God would send you lots of love and sign off.

I know God doesn't usually write letters, so I have to do the best I can on his behalf. Lots of love from me too.

+ Archbishop Rowan

St Monica's Roman Catholic Church, Modbury

No weekly mass at present

St Austin's Priory Roman Catholic Church, Cadleigh

Mass weekly at 11:30 am on Sunday

Phone: 01752 8958rcdtr.org.uk

Web: staustinsivybridge.co.uk



Book a slot!



**MEN'S
BREAKFAST**

SATURDAY 13TH SEPTEMBER | 9AM
FULL ENGLISH WITH TOAST, TEA/COFFEE

*in the
White Hart
Assembly
Room*

*"Men vs
mental health"*
GUEST
SPEAKER
Dr Richard Laugharne
Consultant Psychiatrist

£12.50

book a place with simon franklin 01548
830071 email: safranklin@btinternet.com

Organised by St George's Church

MODBURY BRIDGE CLUB

The Modbury Bridge Club meets every Thursday afternoon between 12.45 and 4.15pm, in the MARS Pavilion at the Modbury QE2 Recreation Ground, PL21 0FS. It provides a friendly, supportive, not too-competitive environment for bridge players of all abilities, from beginners to those of longstanding experience.

This autumn we would particularly like to welcome those who have perhaps played bridge in the past on an informal basis, but would like to learn more about this fascinating game. Teaching would be structured around pairing with an experienced player for some weeks, with the offer of occasional group teaching sessions as well.

Membership is £5 per annum, plus each session costs £2.50 to attend (£3.50 for non-members). Players are expected to be seated ready for play by 1pm at the latest. Further information can be found on The Modbury Bridge Club website. Please kindly let us know in advance if you need a partner for the session, but you are also welcome to bring a partner with you!

Rodney



Modbury Tennis Club is proud to announce the return of the Wine and Wisdom quiz night on Saturday 18 October

The return of the

Wine & Wisdom Quiz Night

Sat 18 Oct

£5 per ticket

Great selection of wines & drinks at cheap prices

Venue: Modbury Memorial Hall Teams: Max 6

Tickets available from Modbury Post Office

DOORS OPEN 7:00PM QUIZ STARTS 7:30PM

THE PIGS ARE COMING



Friday 17th October

Modbury Memorial Hall

Bring A Picnic

Licensed Bar

Tickets Available

September

Save The Date!

Diary of a Local beekeeper – August Abundance, Autumn Action and Asian Hornets

With the late summer spin successfully processed, Duncan reflects once more on the highs and lows of the 2025 honey season.



As usual in August, I returned from my summer holiday and went straight into the laborious process of extracting a second crop of honey from our bee hives – the autumn harvest. Nothing signals the approaching end of summer quite so purposefully. This beautiful honey is made primarily from clover and brambles, plus the many garden and hedgerow flowers of Modbury and the surrounding countryside. It differs markedly from the honey we extract in April and May. Our early spring, creamy-pale honey is predominantly formed from oilseed rape flowers and, although very tasty, does quickly crystallise and harden – indeed it can be difficult to get out of the jar at times! This late summer batch is nicely runny, much darker in colour and tastes very sweet, although it will eventually harden as all pure UK honey will do.

Mulling over the 2025 beekeeping season - as I do every year - has been bitter-sweet this time. After a tragic start, when we lost many colonies all at once in late winter, we nonetheless continued on to have a remarkably bumper year for honey production, largely due to the warm and dry spring and summer weather. We also, unlike some parts of the UK, enjoyed intermittent bouts of rain between the heatwaves, which encouraged vigorous plant growth, leading to good pollen and nectar flows. For much of the summer, Justine and I have been kept on our toes dealing with the unprecedented number of swarms which kicked off as a

result of these conditions. But, by splitting some hives that were on the brink of swarming and retaining the entire colony in two separate hives, we were able to build back up our overall number of bee hives and recover most of last winter's losses. Even better, we now have lots of new queens in place, which should put us in a very good position to start 2026.

Autumn, of course, necessitates a flurry of activity as we prepare all our hives for the coming winter, making sure they can withstand whatever the weather throws at us – and them. This means ensuring that they have good levels of food stores, topping them up with sugar syrup when needed; that the hives themselves are robustly wind and waterproof and that the levels of the parasitic Varroa mites are greatly reduced. I am still pretty sure that it was Varroa, which kept breeding over the mild autumn and winter, that caused such a large number of beehives to perish across the UK. We also make sure the hive entrances are closed right down to just a small, bee-sized gap to help the bees defend themselves against larger, stronger insects such as wasps and hornets barging their way inside and emptying out the food stores.

And speaking of hornets, once again I am asking for everyone's help in the UK-wide struggle against the formidable Asian hornet, which, despite valiant, government-backed attempts to eradicate them, has still managed to get a foothold in south-east England. These horrors regard honey bees as a primary food source and are a major threat to our native colonies. They are smaller than the European hornet and are identified by their yellow legs and an orange band around their lower abdomen. If you think you've spotted one, please try to capture it, or take a photo if possible and then let Justine or me know. You will see increasing publicity about this major problem in both the local and national press.

We would very much like to thank all of you who've kindly given us great feedback on the honey our bees produce. We hope you will continue to enjoy the latest batch, currently stocked in Neale's Cavern on the corner of



A PLEA FROM MARS!

2025 has been a frustrating Spring and Summer, so far, for the small team of volunteers who look after your Pavilion and Recreation Field. Since the field opened in the 1980s and the Pavilion in 2013, we are experiencing our worst year ever for mindless anti-social behaviour, all of which impacts adversely on people's willingness to stay involved in running the site and the costs involved in maintaining the community's only outdoor, available to all, designated recreation space.

Just since the start of June, we have seen the MUGA surface (only installed at huge expense in 2022) damaged, thus requiring expensive repair; glass bottles deliberately broken by the skate ramps and the shards then spread all over the MUGA surface; mindless levels of littering and repeated vandalism of the Pavilion's outside toilet.

As a community, please do not tolerate this behaviour. If you see suspicious or just plain stupid behaviour at the Rec then either challenge it or, if not sure or confident to do so, call the Police. The Police have now noted the increasing trend we are seeing and in addition to stepping up their routine visits to the site, have asked that incidents are reported as they happen and are witnessed. If you have children who go there unsupervised, please talk to them about using the Rec responsibly, and how not doing so really matters, to themselves as much as anyone else.

There are contact numbers for the site's management team displayed on the front door to the Pavilion; if in any doubt please do not hesitate to call. If you want to know more, visit our website at <http://marsport.org>

Modbury Association of Recreation and Sport

Paul Romney



Apr 2025/Mar 2026 Season

Join your local tennis club and have access to the all-weather courts right on your doorstep 52 weeks a year.

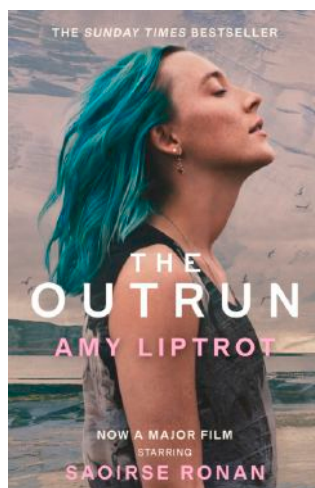
Family Membership	£55.00 pa
Single Membership	£35.00 pa
Junior & Student Membership	£22.00 pa
Child (11 yrs & under)	£ 6.00 pa

- Coaching available for all age groups.
- Friendly Club Sessions Thursday afternoons & Sunday mornings (free to members).
- or just play whenever you wish to.

Full details & Application Form available at www.clubspark.lta.org.uk/ModburyTennisClub
Or, contact: info@modburytennisclub.uk Or, Chairman 07968 777141

Jane Bullen

Holbeton Film Club



September's film is **The Outrun** (certificate 15). Based on Amy Liptrot's best-selling memoir, telling the story of Rona, a young woman returning to her native Orkney Islands after her hedonistic lifestyle in London. The film explores her addiction and recovery, focusing on her struggle to come to terms with her past while reconnecting with the rugged landscape and her complex family history. Rona confronts her demons and seeks solace in the wild beauty of Orkney, finding strength in nature and the possibility of renewal.

This is screening on **Saturday the 13th September 2025** in Holbeton Village Hall. Doors open 7pm. The programme starts at 7:30pm. Tickets on the door are still only £4 (card or cash). Ice creams on sale for £1.



Our programme continues with:

Small Things Like These, 12A	Friday 10 th October
A Complete Unknown, 15	Saturday 8 th November
Paddington in Peru, PG	Friday 12 th December
Mr Burton, 12A	Saturday 10 th January 2026

We have made the difficult decision not to screen *Salt Path* next January.

Harry Baumer 01752 830274, harryluson@gmail.com

<https://holbetonfilmclub.com/>

Harry Baumer

MODBURY COMMUNITY APPLE DAY

SATURDAY OCTOBER 4th MODBURY THERAPY CENTRE YARD, 10:00am

The press and all the kit is booked. Mandy and Andrew Hyde have again kindly offered us the use of the Therapy Centre Yard, a perfect town centre venue for this great community day that always seems to bring out Modbury's team spirit.

Apples from the Millennium Meadow Orchard will be harvested on the Friday to ensure we make a prompt start with the timeless traditional process of creating our own fresh apple juice.

Everyone is welcome: If you have not attended an Apple Day before, please come along to see what goes on. You can lend a hand in the processes of washing, scratting (or chopping) the apples, layering them in the press before cranking down the top and squeezing out all the deliciously fresh juice. Finally the juice is either poured into containers for freezing, decanted into screw-cap bottles for immediate drinking or pasteurised to extend the shelf life for several months.

The waste apple pulp (known as pomace) is bagged up and usually donated to the Church Lane allotment's compost heap, a good demonstration of local recycling.

Please donate your screw cap bottles for Apple Day: Another way to help with local recycling is to make September 'Bottle Recycling for Apple Day' month. Please donate your glass bottles well in advance as we have to soak off the labels, wash and sterilise them before we can use them.

We can collect bottles, just call **07808 582 224** to arrange collection or leave a message saying where they can be collected from.

You can donate apples too: If you have a surplus of apples from your own trees and want to donate them, we will happily add your contribution to our rustic production line. Just bring them along on the day.

Wondering what happens to the juice? Well, we make some juice available to take away on the day and ask for a small donation to cover expenses, such as the hire of the press and all the kit. Apple juice doesn't get any

fresher than this. The frozen containers and pasteurised bottles are stored and used at community events for refreshment. Those who have attended our traditional Wassail in January will know we always provide free mulled apple juice. It's guaranteed to warm up our Wassailers on what may be a cold January night. Look out for an announcement about that in December.

**Make a note of the Apple Day date:
Saturday 4th October at the Modbury
Therapy Centre Yard from 10:00am**

**Colin Whybrow
Modbury Community Orchard Group**



The blue door next to The Curator Café opens into the Apple Day yard



There are many ways to participate in the apple pressing

ROCWORX - Devon Open Studios 6 – 21 September 2025

Rachel O'Connell - Marbling Artist + Leatherworker

I will be opening my studio for the first time to the public during this year's Devon Open Studios. We have a cluster of artists in my area, so it is worth checking out the guide available online <https://devonartistnetwork.co.uk/devon-open-studios>

I'll be open from **11am on Tuesday 9 September**, offering an insight into the endangered heritage craft of marbling. Marbling is a surface pattern, which originated in Japan over a thousand years ago, before arriving in Europe in the 13th century. I marble, using traditional Japanese, Turkish and European techniques, onto paper, textiles, leather, and wood. I have exhibited and sold work in national galleries and museums, including The British Museum. My work can also be found in local art galleries and independent shops.

During the open studios, I will marble to create stationery, tableware, lampshades, leather goods and Christmas baubles. I am running a few workshops during the event for marbling and bookbinding. Classes are small (maximum of four adult students) for focussed attention.

Parking is either on the gravel drive, or across from my studio. Follow the B3196 to find my studio in Brownston, just off from California Cross. Look-out for the yellow and black arrows by the pub and turn down into Brownston hamlet (lane by the Cali Inn). You'll find my studio at the bottom of the lane on the bend. Access to my studio is via a wooden gate in the gravel drive, turn left and come in via two steps. It is a working studio and so I ask for the supervision of children during your visit.

What3words: ///reflect.appealed.snacking

For information and to book my studio workshops, visit: <https://rocworx.co.uk/collections/workshops>

Open days and times: Sat 6th, Sun 7th, Mon 8th Sep - Closed, Tue 9th - Thu 11th 11:00am - 4:30pm

Fri 12th & Sat 13th Workshop, Sun 14th 11:00 am - 3:00 pm Mon 15th 11:00 am - 4:30 pm

Tue 16th Closed, Wed 17th & Thu 18th - 11:00am - 4:30pm, Fri 19th Workshop

Sat 20th & Sun 21st 11:00am- 3:00 pm

Rachel O'Connell



www.let-it-out.co.uk

*The flexible approach
to letting your holiday home*

Gail Critchlow
07889 628514

Liz Baker-James
07388 673228

Harp Recital

Saturday 20th September 2025 at 7.30 pm

All Saints Church, Holbeton



Acclaimed musician Elizabeth-Jane Baldry will perform a varied programme of harp music at All Saints Church, Holbeton on Saturday 20th September 2025 at 7.30 pm.

All proceeds to All Saints Church.

Licensed bar and raffle.

Tickets £15 from Eventbrite or from Holbeton Village Stores.





Modbury History Society

Modbury History Society has unexpectedly been asked to change its evening from a Monday to a Tuesday at the request of the Pavilion management. Subsequently, the next meeting will now take place at 7.30pm on Tuesday, 9th September at the QEII Pavilion in Chatwell Lane, Modbury when Alan Bricknell will talk about 'The Three Towns - Plymouth, Devonport and Stonehouse in the nineteenth century'.

The Society's subscription is £20 for a series of eight lectures, which is collected at the September meeting, but guests are welcome to come along to an individual lecture for a fee of £5. There is ample parking in the Pavilion grounds.

Find out more about Modbury's history by looking at the Modbury Heritage website, modbury-heritage.co.uk which has a wealth of information particularly useful to family historians and those interested in architecture. The site even has a detailed walk around the town with explanations of the places of especially interest.

Rosemary Parker



Apr 2025/Mar 2026 Season

Join your local tennis club and have access to the all-weather courts right on your doorstep 52 weeks a year.

Family Membership £55.00 pa

Single Membership £35.00 pa

Junior & Student Membership £22.00 pa

Child (11 yrs & under) £ 6.00 pa

- Coaching available for all age groups.
- Friendly Club Sessions Thursday afternoons & Sunday mornings (free to members).
- or just play whenever you wish to.

Full details & Application Form available at

www.clubspark.lta.org.uk/ModburyTennisClub

Or, contact:

info@modburytennisclub.uk Or, Chairman 07968 777141



If Swing is Your Thing.. **In Aid of St. Luke's Hospice**



Saturday 13th September 2025; 7-11pm
At Modbury Memorial Hall, Back Street, Modbury, PL21 0QZ

Come and dance the night away or simply enjoy listening to Nationally Acclaimed

'The Drat Pack, starring James Billington'



With 'Mad About Swing' DJ

Please bring your own Drink and Nibbles.

Swing dance class suitable for beginners. Sprung dance floor.

**Tickets at £18 available in advance only from Heather 07876522934;
heather.hinkley@sky.com**



Registered charity No. 254402



Visit us at our dedicated Wellness Sanctuary

**Blissful Yoga.
Workshops & Events.
Coffee & Shopping.**

WellnessWarriorsYogaStudio.co.uk

Modbury High Street, 2C Broad Street, Modbury PL21 0PS



Sarah Wyatt

Independent Civil Celebrant

**Weddings, Namings, Vow Renewals,
Funerals – Celebration of Life**

MAKING MEMORIES WITH BEAUTIFUL CEREMONIES

Tel: 07794662903 Email: circlecelebrantsarah@gmail.com

www.circlecelebrancy.co.uk



Coastal
Garden Services

Tree Surgery & Landscape Management

Contact: Andy Walker on 07793 056898

info@coastalgardenservices.co.uk

Working in the South Hams for 12+ years

Fully insured - NPTC & RHS qualified



ERMINGTON HOUSE
Quality Residential Care



Ermington House

Quality Care 24 hours a day in an idyllic location

- 24-hour Person-Centered Care
- Highly trained, caring and attentive staff
- Daily stimulating entertainment and activities
- Home cooked, nutritional and appetizing meals
- Safe and secure environment
- Daily visits by District Nurses
- Regular visits by Chiropodist, Hairdresser, Dentists, Opticians and GP's
- Beautiful personalized en-suite bedrooms
- Respite and Long-term Care

Ermington House, Ermington Nr Ivybridge, Devon PL21 0LQ
Email: enquiries@garad-carehomes.co.uk | Tel: 01548 830076
www.ermington-house.co.uk



Landscaping and General Building

Including:

**Stone Walling • Retaining Walls • Groundworks
Drainage & Irrigation • Driveways
Patos & Paths • Gates • Fencing & Decking etc**

Family Business Since 1976
Company No.3942610

Competitive Quotes Given, Full Insurance

Gatcombe Mill - Littlehempston - Totnes - TQ9 6LW

Office: Tel- 01803 864 871
Email: enquiries@afbrown-sons.co.uk
Web: www.afbrown-sons.co.uk



Modbury Tiddlers Playgroup

Come and say hello!

For families with children 0-4 years

Fridays – 9.15-11.15 at Modbury Memorial Hall

Last Friday of the month – out and about day

Term time only

Sensory play, crafts and a dedicated baby area
Dress up, ride ons, toys and more!
Refreshments provided for adults and a healthy
snack provided for children



Find us on facebook and instagram for up to date info each week

Modbury Tiddlers @modbury_tiddlers
mail@modburytiddlers.org.uk

Carers Direct (SW) Ltd

Bringing Care To Your Home



**Do you or a loved one need a little
extra help?**

WE ARE HERE TO HELP

Carers Direct SW Ltd is local not-for-profit care
team of dedicated, well trained, friendly, local
carers.

We can provide from one hour to 24-hour care.

Tasks undertaken include personal care, meal
preparation, prompting medication,
appointments and social outings.

Contact us for more information on:

01548 854358 or Email. office@carersdirect-sw.co.uk

You are welcome to pop in and see us at our office:

Unit 2N South Hams Business Park, Churchstow,
Kingsbridge, Devon TQ7 3QH

CARERS DIRECT (SW) Ltd

**Est. independent
LOCAL ELECTRICIAN**

**Dependent, honest
and reliable service**



LightWorks
Domestic Electrician

- Complete rewires and new builds
- New 18th edition Consumer Units/Garage Units
- Landlords & Insurance Certificates
- Domestic electrical fault finding
- Specialising in garden, kitchen and floor lighting from planning to certification

All work guaranteed/certificated
Fully insured, qualified &
registered with NICEIC



Call Phil for a free, no obligation quote or callout

Tel: 07769 840012

Email: lightworks.electrics@gmail.com



NOAH'S ARK

For 0-4 year olds

Wednesday Mornings
Term Time 9.30-11.00 am

The QE11 Recreation Ground
Chatwell Lane, PL21 0FS

Hot drinks • Home baked cakes • Baby weighing scales
Songs • Musical instruments • Bible story • Craft
Baking activity • Parachute games

Contact: s.chapman@modburyteam.org



A KATS production

Wednesday 24th to
Saturday 27th September

PLAY ON!



SCAN ME

written by Rick Abbot
directed by Christine Bonner & Jules McColl

Malborough village hall. 7.30pm each evening

Tickets available: visit kats-kingsbridge.co.uk
or call 07584 905810

THIS AMATEUR PRODUCTION OF "PLAY ON!" IS PRESENTED BY ARRANGEMENT WITH CONCORD THEATRICALS LTD.
ON BEHALF OF SAMUEL FRENCH LTD. CONCORD THEATRICALS.CO.UK



Luscombe Maye
Since 1873

The Luscombe Maye Advantage

To find out how much your home is worth,
please call or email Eleanor, Sara or John
in the Modbury office.

For more information contact
modbury@luscombemaye.com or
call 01548 830831

luscombemaye.com

[f luscombe maye](#)

[@ luscombe_maye](#)

Last of the Summer Wine comes to the Palm Cross flagpole

On the Friday before the Modbury Fruit & Produce Show, I received a phone call from David Scott (Modbury's Town Crier) asking me to do him a favour.

As David was going away, he asked me to put up some flags on the Sunday. We both live in Benedict Way so he popped up to deliver a bag of three sets of flags and to give me instruction on how to hoist the flags on the flagpole at Palm Cross.

On Sunday 27th July, I went up to the flagpole at Palm Cross and, following the notes I had taken, hoisted 2 sets of flags and the Union Jack. The main pole required the hoisting of the Union Jack and David had indicated which way up that should go. Whilst the task was completed, unfortunately, I had a thought that proved my undoing!! Had I got the Union Jack the correct way up? Only one thing to do! Take the flag down to check!

At this point I would mention that David employs a system of two ropes for each of the 3 available poles. There is an uphaul rope and a downhaul rope for each. Obviously, I used the uphaul rope to get the flags up!

Unfortunately, I made the mistake when taking the Union Jack down! I undid the ropes and held the wrong rope and suddenly the flag hit the floor beside me. As it dawned on me as to what I had done, I could see only four inches of the downhaul rope sticking out of the very top of the flagpole!!

At that point, numerous expletives followed!!! The uphaul rope was now twice as long with a tiny bit of downhaul rope inaccessible at the top of the flagpole! Only a knot had prevented the whole rope passing through! After staring at the rope and the flagpole for a while, I finally gave up and packed up the Union Jack in the bag and returned to Benedict Way feeling rather deflated. Incidentally, the Union Jack was correctly tied in the first place!

I mentioned it to Jeff (my neighbour) and he suggested we go back up so he could have a look at the issue. This is the point where Compo and Clegg (from Last of the Summer Wine) took over!

Jeff and I looked at the rope and flagpole and, naturally, concluded that the tallest pole was now un-useable! When David returned, I had already emailed him informing of the disaster and, to be fair, he took it well.

This is where Brian Weeks (aka Foggy from Last of the Summer Wine) took over when I mentioned the problem to him. Within a day, Brian had fashioned a very long pole, from numerous poles, and it could reach the very top of the flagpole.

Brian's pole was rather heavy and did tend to bend a great deal (as it was taped together) so we had to be very careful when raising it. The flagpole looks over the A379 as it goes down Church Street. The best method was to raise Brian's pole through the yardarm to access the top of the pole without causing a disaster below!

Brian had to attach something to the top of his pole to try to capture the 4 inches of rope sticking out of the top of the flagpole! Each time Brian tried, Jeff and I shouted directions to get Brian close to snaring the small length high above. Plan A & B failed, however, on Wednesday 30th July, Plan C finally worked and the rope was captured and returned. The main flagpole was available to David once more!

I felt a lot better as I knew that the first week of August carried some important flags to be hoisted, as indicated in the Modbury Messenger. I am sure that we were observed by many during our pole lifts and, after many efforts, the lads from the Last of the Summer Wine could finally stand down! Thankfully Foggy's input was invaluable!

Martin Hunt

SINGALONGA SPACE

**We are seeking an Acting Cast of 8 people,
A Chorus, Dancers and those to support
behind the scenes
(Adults & Children)**

**Come along to an Introductory meeting
Saturday 27 September
2-5pm**

Modbury Memorial Hall

**The actual show will take place on
14/15 November**

Rehearsals every Sat/ Sun wef 3 October

**If you cannot attend on 27/9 but wish to take
part, please ring Sally Taylor on 07828 478809**

Fly Tipping

On the evening of Sunday 27 July, a new incidence of fly tipping took place on the Galpin St to Ayleston Cross road. It was noted early the following morning and reported to South Hams District Council. After investigation, it was swiftly removed by the local landowner. Thank you to our Localities Officer, Gary Throgmorton and local District Councillor, Bernard Taylor, for facilitating this.



As a Parish Council, we continue to keep a close watch around our area identifying such incidents and will do all we can to help the statutory agencies pursue and prosecute the culprits.

Remember, there are large fines for fly tipping. If you have rubbish to be disposed of and can't take it to the recycling centre yourself, please ensure that you use only reputable clearance companies who can demonstrate compliance with the law. You can be fined if your rubbish is fly-tipped by a third party, even if they were appointed to dispose of your rubbish in good faith.

Phil Smith, Modbury Parish Council

INTENDED MONTHLY FLAG HOIST AT PALM CROSS GREEN - September

Date	Masthead	Starboard Yard (Plymouth) - West	Port Yard (Modbury) - East	Event
03	Red Ensign	W1 st sub2	Ans1933 rd sub	MN Day. Start of WW2 1939
07	London Flag	BLITZ	Ans1940	Start of London Blitz 1940
13	Army	QUEB3 rd subC	1759	Battle of Quebec 1759
15	RAF Ensign	BRITAN	1940	Battle of Britain Day 1940
16	St George Cross	MAYFLR	1620	Sailing of Mayflower 1620
21	RAF Ensign	BRIT3 rd subN	SUDAY	Battle of Britain Sunday 2025

walk&talk

September's walks will be Tuesday 2nd, 9th, 16th, 23rd and 30th Sept.

The venue and travel arrangements for each of the walks will be discussed at the previous week's walk and decided according to the weather forecast for the walk day.

Walk leader contact details:-

Sue Rogers 01548 831289

Jean Wright 01548 810029

Sue Rogers

AUNE VALLEY IN MODBURY

6 Church Street, Modbury



Free Local Delivery*

*Terms & conditions apply.

Bring this with you to receive 10% off in the shop or café. Terms & Conditions Apply

10% Off
with this advert

www.aunevalleymeat.co.uk

SOUTH HAMS WALKING FOOTBALL CLUB

South Hams Walking Football Club is a nonprofit organisation dedicated to creating a safe, inclusive, and welcoming environment for men aged 50 and over and women aged 40 and over to enjoy both friendly and competitive walking football within the South Hams community. We understand the physical, mental, and social benefits of regular exercise and are proud to have welcomed many new members throughout the year. Our club is more than just football — it's about community, connection, and wellbeing.

In addition to our league teams, we offer a "Just Play" programme — a relaxed, mixed-gender session open to women over 40 and men over 50. These sessions are designed to be fun, pressure-free, and social, helping participants rediscover the joy of the game in a supportive setting.

Our season's successes:

South Hams Striders (First Team): Promoted for the **third consecutive year** — now heading to the **Premier Division** in September 2025!

South Hams Saints (Second Team): From just 1-point last season to **league champions** this year — now promoted to the **Intermediate Division**!

A huge shoutout to our dual-role heroes **Paul Dickinson** and **Jim Hirst**, who have proudly represented our **County** this season.

Paul has gone even further, playing for **Southwest South (Counties)** and now selected for **England Over 65s trials**!

Nigel Bowers will also represent **Southwest South** this week in Nottingham — good luck, Nigel!

Next season our **Striders** will be competing in the **Devon Walking Football League (DWFL) Premier Division** & our Saints will be playing in the Intermediate Division DWFL.

Committee

Peter Jones (Chairman) pete2112@hotmail.co.uk (07928 771574)

Tony Callcut (Secretary) tcallcut1@gmail.com (07706 143133)

Paul Dickenson (Football Coach) spurs027@gmail.com (07505 134625)

Jamie Anning (Treasurer) jamieanning@outlook.com (07811 101317)

Interested -

Contact a committee member

Just Play Sessions

When: Thursdays, 2:00–3:00 pm **Where:** MARS (PL21 OFS) or Ivybridge Leisure Centre (PL21 OSL) in bad weather

Who: Ladies 40+ and Men 50+. **Cost:** £5 per session

Why: No pressure, no strings — just fun, social walking football!

Recruitment: Whether you're looking for casual play or competitive league action, we welcome new players.

Get Involved - Sponsorship Opportunities: From shirt branding to training tops — support your local club and gain visibility! A huge thank you to our two current sponsors: **Ian & Kate at ARC_LED** arc-led.co.uk and **Ashburton Motors** ashburtonmotorworks.co.uk

Jamie Anning



ModWAG EVENTS

September 3rd at 7pm

Bat Walk - Meet at St George's Church.

September 15th at 7pm QEII Pavilion

Sow your own Pocket Meadows - this autumn for you and the insects to enjoy next summer - see below!

September 18th, 6.30 -7pm QEII Pavilion

Film: "A Vision of the World in 2040" - shown in conjunction with Ermington Environmental.

Concerned about his young daughter's future, filmmaker Damon Gameau travels the world in search of new approaches and solutions to climate change. He meets with innovators and changemakers in many fields to draw on their expertise.

September - Date TBC

Moth Trapping

Let Charlotte (cmrathbone@outlook.com) or Boony (carolinebower@btinternet.com) know if you're interested in coming.



Charlotte Rathbone

Sow your own Pocket Meadows this autumn for you and the insects to enjoy next summer!



Come along to the MARS pavilion at the QEII Recreation Ground on Monday 15th September, 7pm to hear how you can help protect South Devon's rare and special pollinators.

ModWAG is again teaming up with Life on the Edge, a heritage lottery-funded project of South Devon National Landscape, to launch a town-wide pocket meadow project, and WE NEED YOU!

Every person making a change, matters. But when we get together, the change we make can really escalate. If you made a single 1m x1m square meadow of wildflowers in your garden, its benefit is very localised, but if we make hundreds across the town, the whole landscape would be buzzing with vital invertebrate life.

Join us for our launch event to find out more about how you can be involved, why it's so important and what ModWAG and Life on the Edge are doing about it.



Charlotte Rathbone

TO WEED OR NOT TO WEED???

I found it interesting to read in recent Modbury Messengers, the wonderful articles on behalf of ModWAG. However, I thought I would take the opportunity to put alternative proposals on the table/lawn/kerb, etc.

Since a young lad, I have always supported all things 'nature' and even started a wildlife club at the tender age of 10. I was one of the early subscribers to the World Wildlife Fund and still support two international charities trying to save endangered species. I appreciate this may rankle, but I do get a bit miffed when I read how 'we' now need to save various weeds (yes - weeds) and areas of vegetation in and around our villages - much of which includes people's lawns and kerbsides on the public highways!!

Towns and villages in the South Hams are fortunate enough to be surrounded by huge expanses of countryside looked after by our fantastic farmers and rural landowners. Are we now saying that countryside, and the abundant array of flowers and flora grown in our gardens for centuries are no longer good enough for the birds and the bees? I appreciate they need all the help they can get, but unsightly dehydrated grasses and shrivelled flowers and weeds are just not going to help!

My wife and I have, in the past, litter picked around Modbury and cleaned sign posts here (and elsewhere) as it appears that this is a forgotten 'taxed paid' service. Litter is either buried in overgrown 'unkempt' grass or is being shredded into hundreds of pieces by Council vehicles, most especially on our main roads, instead of being environmentally 'litter picked' prior to cutting! This all detracts from the beauty of the environment. Our pavements are overshadowed with hedgerows and brambles forcing pedestrians to dangerously walk even further out into the road.

As for the Modbury Makeover weekend - a truly great idea. However, we all have a responsibility to keep 'our patch' clean and tidy EVERY DAY; we shouldn't need a special weekend to fly the flag for Modbury and make it look tidier. In previous years, the town strove to get elected for the Best Kept Village - definitely not something we could consider again, at the moment.

In closing, I would implore us all to make the effort to remove all the long, dead (and potentially fire hazardous) grasses and weeds from lawns and streets near you and make Modbury a much more pleasant environment to live in.

Controversial - me? Never!

Mervyn Kettle



Dementia Friendly Parishes around the Yealm

Supporting people with dementia and their families in Wembury, Yealmpton, Brixton, Holbeton, Newton & Noss with home visits, advice, information and a variety of inclusive groups (**Groups open to everyone from any area**)

Last Monday in month - FREE Monday Club, 10.30am -12.30, **Yealmpton Methodist Church**. Currently partnering with "Life on the Edge" project (creative, nature-focussed activities).

Every Tuesday - Gentle Exercise Classes, 10-11am, 11.15am-12:15pm, **Yealmpton Methodist Church** (£6). Free taster session.

Every Wednesday - FREE Walking Group, meets 10.30am, Barton Close car park, Wembury for a gentle walk with friendly company in various locations.

Every Thursday - Listen and Laugh to familiar stories and poetry over a cuppa, 10.30-12.00pm, **Parish Rooms, Bakery Square, Yealmpton** (£3).

1st Friday in month - FREE Carers Catch up- Carers support group, 2-3.30pm, **Yealmpton Methodist Church**.

2nd Friday in month - FREE Coffee and Chat, 2-3:30pm, **Rose & Crown, Yealmpton**

3rd Friday in Month - Singing along 2.-3.30 pm, **Yealmpton Methodist Church**. (£4).

For more information about the groups, call Claire: 07450206312, E: info@dementiayealm.org. or <https://www.dementiayealm.org/>

"We can't change the person living with dementia, but we can change the experience they have in their community".



Four Rivers Dementia Alliance

Four Rivers Dementia Alliance (4RDA) developed from Dementia Friendly Parishes and is comprised of 20 rural and town parish councils and other organisations working to build inclusive dementia friendly communities and aiming to engage all sectors of the community e.g. individuals, businesses, voluntary, faith, health, care, education, etc, supporting them to make their services inclusive and easier for people with dementia to use.

4RDA offers FREE support via delivering:

- ❖ Dementia awareness sessions to any organisation and the public.
- ❖ Conducting dementia friendly building assessments on community buildings, shops, cafes etc to ensure they are easier to navigate for people with dementia.
- ❖ Advising on dementia friendly signage, making processes/ written information dementia friendly.

Even the smallest of changes can make a very big difference to experiences of people living with dementia and their families in your community.

For more information, contact Claire on: 07349160447, E: development@4riversdementia.org.uk or visit : <https://www.4riversdementia.org.uk/>

Claire Puckey

Parish Office Opening Hours

With effect from 1 August the Parish Office opening hours have changed. It will now be open from 10:30am to 5:00 pm on Tuesdays and Wednesdays.

Saturday surgeries will continue between 10:00 and 11:00 am.



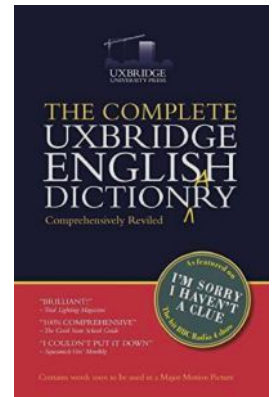
Bleddyn Griffiths, Parish Clerk

Further Additions to the Uxbridge English Dictionary

With apologies to "I'm Sorry, I Haven't a Clue", the originator of the Uxbridge English Dictionary. I'm looking for suggestions from other people to add to the Modbury edition, so here are a few more,

decrease : do the ironing
figure : more like a fig
solar farms : farms between far and tee
grateful : time to empty the ashes
unfounded : still lost
impact : he's ready for his holiday

John Curry



If you have some suggestions for Modbury's own version of the Uxbridge English Dictionary, please send them to modburymessengercic@gmail.co.uk

Modbury Table Tennis Sessions

Wednesday Evenings 07:30pm to 09:00pm The Pavilion, Queen Elizabeth II Recreation Ground, Modbury - For all people aged 16 – 105. Only £2.00 per session

For those of all abilities, it doesn't matter if you have never played or last picked up a bat many years ago. All equipment is provided, but you are welcome to bring your own bat if you have one. There is no need to book in advance, just turn up on a Wednesday evening and we will make you as welcome as we can.

If you would like to find out more phone Colin or Aly Low on 01548 830089, leave a message if we don't answer. You can send a text to 07551 939639 or email colinalow@hotmail.com.

Colin Low

Modbury and South Hams Creative Writing Group



The Modbury and South Hams Creative Writing Group meet every month to read and discuss our work.

Below is a submission which one of our members brought to our last meeting. The theme was 'Journal' and this piece is a factual account of an event that happened to the writer and her horse recently.

We are keen to welcome new members, so if you enjoy creative writing, why not join us. We meet usually on the first Saturday of the month at the Queen Elizabeth II Pavilion in Modbury at 10.00am.

www.facebook.com/modburyc creativewritinggroup Or call 07767 393802

The Gallop

Flies are everywhere. I am striding over to the field towards the two chestnut horses, standing together close by the open gate. As I move nearer, I see and hear the buzzing around the large, raw open wound on the horse's chest. Shocking. I pace around trying to hold myself together. How has he done this? Trying to keep calm, fighting back tears, I lean forward and touch the traumatised animal. My first thoughts are he will have to be shot.

He clearly has not moved for hours. The other horse stands next to him watching over. Sunny blue skies above, the heat beats down. When I take off his bloody flymask, his eye is massively swollen so he can't open it and this too is covered with the buzzing critters.

The lesion on his chest is open, with red granulated skin, oozing a red liquid. It must be 6 inches square. How can this heal? There is nothing to stitch together. What has happened?

Over the top right-hand side of the field the gate is locked, but could something have spooked him? Poor Buzz is standing still, unable to move. I look around at the gate post, a shortened telegraph pole, it has moved 45 degrees. I study the rough texture of the wood, no evidence here but below the rail which has fallen down is a large dry, crispy piece of skin baking on it. Buzz's missing skin. He has run into the rail.

Rather quickly I realise I must call the vet. She arrives twenty minutes later. "Are you insured?" I tell her no. "If you were, he would be on his way to the Veterinary Hospital. She tells me to collect water so she can wash out the wound. I need to go to the house for fresh water as the field only has a supply of rainwater. As she cleans it is obvious there is a deep hole in the chest, some five to six inches long where the rail penetrated. He must have been travelling at some speed. His eye too is cleaned but the flies persist.

"We need to move him into the stable," the vet informs me, but the horse is still not for moving. I suggest moving his front legs one by one and maybe when he gets going he may be able to walk out the field and up the drive.

That is what we do. We lift each leg one after the other and push him from behind. He doesn't help or contribute at all. It takes over an hour and a half and we are exhausted. The Veterinary Equine nurse arrives and gives him his shots for antibiotics, anti-inflammatory and pain, and the washing out continues with iodine and cotton wool to clean out the deep wound. Buzz just stands numb. "How are we going to keep the flies off?" I ask. The nurse secures 3 blue loops above and below the lesion then the dressing is placed over and a ribbon is laced through, macrame fashion. He is feeling drowsy but a little better and we move him into the stable.

"Twice a day, repeat this, and put some anti-fly udder cream around the edges. I'll come back tomorrow and see how he is," she adds as she is leaving.

I will have to get my head in the right place for this extreme nursing. Later I attempt the procedure armed with a pair of gossamer gloves. I can get my whole hand into the wound, right beyond my wrist. He is happy and allowing me to top up his meds and I keep checking him all night.

The next morning, I am happy to repeat the tasks all over again, although worried about the flies, being early summer. The fluid continues to build up under the chest and the armpit. Could be infection or lack of movement. On checking with the vet, they suggest walking him about and adding manuka honey to the cleaning procedure, which is messy and sticky but has wonderful healing properties. I consult a horse friend who suggests I stop using the vet as soon as possible as the cost will mount up very quickly. She has experienced a similar lesion on her mare but under the armpit. "Get him out as soon as you can, get him moving."

Over the next few days, the blue plastic loops fall out quite regularly and then the vets come again checking him and redoing them. I am keeping the visits down to a minimum. I surprise myself by coping with all the blood, cleaning out and injecting. His damaged eye is healing and he can see but it has lost the brightness of the other. He is clearly feeling better as he trots up the field and the actual hole is reducing.

But a small lump on his girth line appears. Liquid is filling up around it and I have the horrible thought that a piece of wood has passed down the chest hole under his leg to his left side. Can this really be happening? And how can I get it out? Horse guru, Liz, suggests that I spray the aloe vera on the area. It's working and soon the liquid disappears and the lump reduces. Liz and I surmise that the horse had been bitten or stung where the lump appeared. This perhaps spooked him and he galloped across the paddock, at speed hitting the telegraph gatepost, which moved 45 degrees back, whereupon the rails fell off pushing into his chest. He was hampered by wearing the flymask, reducing his vision.

We still don't know what happened for sure because he can't tell us.

Lesley Wilde

WILD WILL
THEATRE COMPANY

Jerusalem

by JEZ BUTTERWORTH

"The greatest play of the 21st century" The Guardian

MOTHECOMBE HOUSE & GARDENS

Wednesday September 3rd - Saturday September 6th 19:30
Saturday September 6th Matinee 13:30

Tickets: £35, concessions £20 at www.wildwill.co.uk

An amateur production by arrangement with Nick Hern Books. Directed by Rob Heyland.

	Sash window repairs & renovation	Casement window repairs & renovation
Traditional bespoke furniture	New sash & casement windows	Replacement sashes & casements

Timber sash and casement window sympathetic repairs and replacement.
Bespoke timber sections and mouldings to match the existing.
Bespoke traditional country furniture in hardwoods and softwoods.

PHIL PAWSEY -Joinery and Crafts.
4 Stakes Hill Cottages, St Ann's Chapel, Kingsbridge TQ7 4HX
Email: philpawsey001@gmail.com
Mobile: 07580 099782

COMMERCIAL ADVERTISING RATES MODBURY MESSENGER 2025

SIZE	Size - can be portrait or landscape	1 month (per insertion)	3-11 months (per insertion)	12 months (per insertion)	12 months (Year total)
1/8 page	45mm x 65mm	£30	£26	£16	£192
1/4 page	90mm x 130mm	£60	£50	£30	£360
1/2 page	130mm x 180mm	£108	£86	£50	£600
1 page	180mm x 250mm	£192	£148	£80	£960

The Modbury Messenger is an all colour publication, no preferential rates for black & white advertisements.

To advertise in the Modbury Messenger, contact the Editor, Lynne Barnes, via email on modburymessengercic@gmail.com with details of the size of the advert and how many months you wish to advertise for.

Modbury Messenger October 2025

The copy date for the October 2025 Modbury Messenger is **10th September**. Please email all articles, notices of events and paid advertisements to modburymessengercic@gmail.com.

The Modbury Messenger is published by Modbury Messenger CIC and is printed by ESP Print. The views expressed in the Messenger do not necessarily represent those of Modbury Messenger CIC.

The Editorial Committee reserve the right to précis/abbreviate any copy submitted for inclusion in the Modbury Messenger. Their decision is final. The contents of the Modbury Messenger may not be reproduced in any form without the prior written permission of Modbury Messenger CIC. Guidance for submitting material is available online at <http://modburymessengercic.co.uk/about.html>

Persons submitting entries with art or photographs not drawn or taken by themselves must confirm they have obtained copyright permission, or agree to pay any copyright fine which is subsequently raised

modburymessengercic@gmail.com

MODBURY MESSENGER CIC

Modbury Messenger CIC is a Community Interest Company and as such is registered by the Registrar of Companies for England & Wales, Northern Ireland or Scotland. A Community Interest Company is a special type of not-for-profit limited company which exists to benefit the community. The purpose of Modbury Messenger CIC is to disseminate information about events, notices and articles of interest to the people of Modbury and it does this by publishing the Modbury Messenger, a printed newsletter, every month with 1000 copies delivered to homes and businesses within the Parish of Modbury. An online copy of the Modbury Messenger is available to neighbouring communities, advertised via social media and on our website modburymessengercic.co.uk.

Advertisers are charged a fee for advertising in the Modbury Messenger and this covers the cost of producing the Modbury Messenger. The Board of Directors, Company Secretary, Editor, Proofreaders and Distributors are all volunteers.

Directors of Modbury Messenger CIC: Diana Lynne Barnes & Bernard Taylor.

Company Secretary: George Rosevear FCIS.

Editorial Committee: John Bower, Lynne Barnes, Ira Young.

Modbury Messenger CIC has produced the Modbury Messenger as an independent CIC since September 2018. Previously, it was published by Modbury Parish Council.

THE FLOOR SHOW



Your Local South Hams
Carpet & Vinyl Flooring Experts

7 Church Street, Modbury,
Devon. PL21 0QW

01548 830909

thefloorshowmodbury@gmail.com

www.thefloorshowmodbury.co.uk

GREENLANDS NURSERY

Higher Wizaller, Modbury, PL21 OSE



Shrubs and Perennials
Godwins Professional
Peat Free Compost
Planted hanging baskets



Deliveries can be arranged

Local family run business excellent value

Tel: 01548 550491 or 07534 611587

Email brendagreenlandsmodbury@yahoo.com

We also have a good selection of marble based garden ornaments

- Bathroom and kitchen fitting
- Floor and wall tiling
- Leaking toilets/radiators/taps etc
- Radiator replacement and additions
- Shower pumps
- Links with local builder/electrician for larger installations if required

Chapman & Sons Plumbing Service



Small jobs welcome
Reasonable rates
Free quotes

Telephone 07468 466380 now
for a speedy and efficient service.



For customers who expect more
from their estate agents.

Our Modbury team has a wealth of South Devon Estate Agency experience, covering the coast and countryside. Whether you're looking to buy or sell, contact our friendly and knowledgeable team today.

**SALES | LETTINGS | AUCTIONS, CGT, IHT &
PROBATE VALUATION**



01548 831163 | modbury@marchandpetit.co.uk
4 Broad St, Modbury, Ivybridge PL21 0PS
www.marchandpetit.co.uk

HELEN MOORE
PROPERTY

POWERED BY
exp UK

Independent Estate Agents

Over 100 years combined
experience

Local. Approachable. Honest.

 01752 962162



MODBURY
DENTAL PRACTICE

OUR SERVICES

- Cosmetic Dentistry
- Dental Implants
- Restorative Dentistry
- Hygiene Services
- Orthodontic Aligners
- Same Day Emergencies
- Root Canal Treatment
- Extractions
- Dentures
- Tooth Whitening
- Facial Aesthetics
- Membership Plans

MODBURY DENTAL PRACTICE

Tailored dental treatments for the entire family

Practice Plans

Our plans allow you to spread the cost of your dental exams and hygienist visits into monthly payments.

Finance Options

We offer a 0% APR finance so you can spread the cost of your dental treatments in affordable payments.

NEW PATIENTS WELCOME

4 Broad St, Modbury, Ivybridge PL21 0PS

Tel no: 01548 830811

Mon-Fri | Private appointments only

www.modburydentalpractice.com